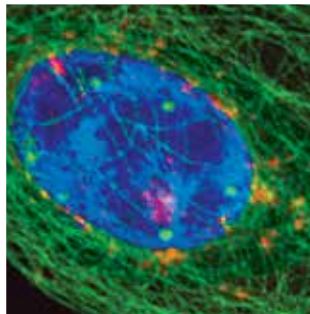
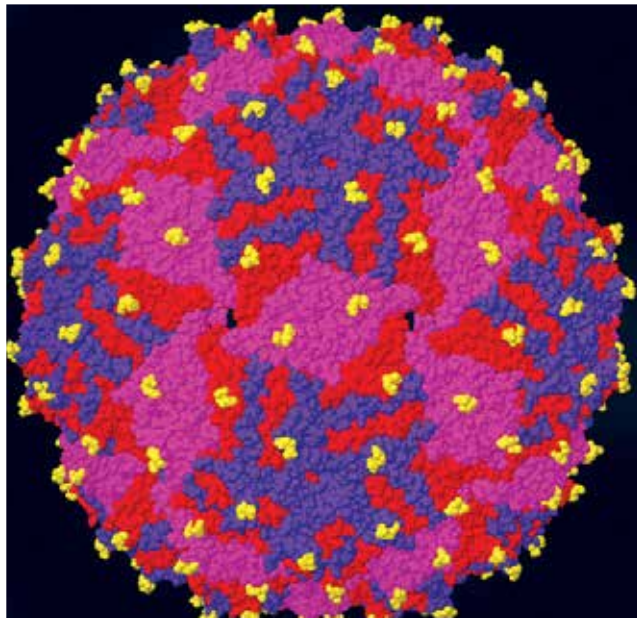
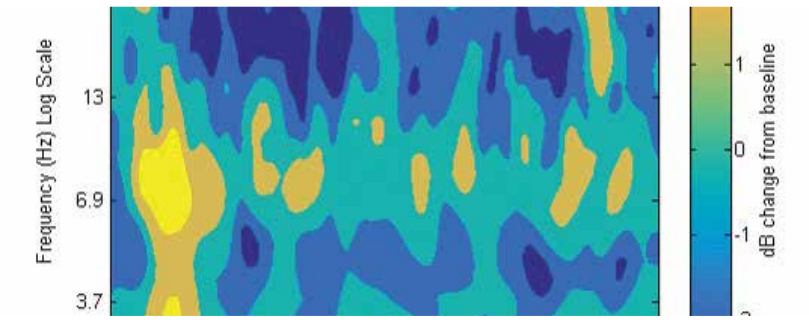
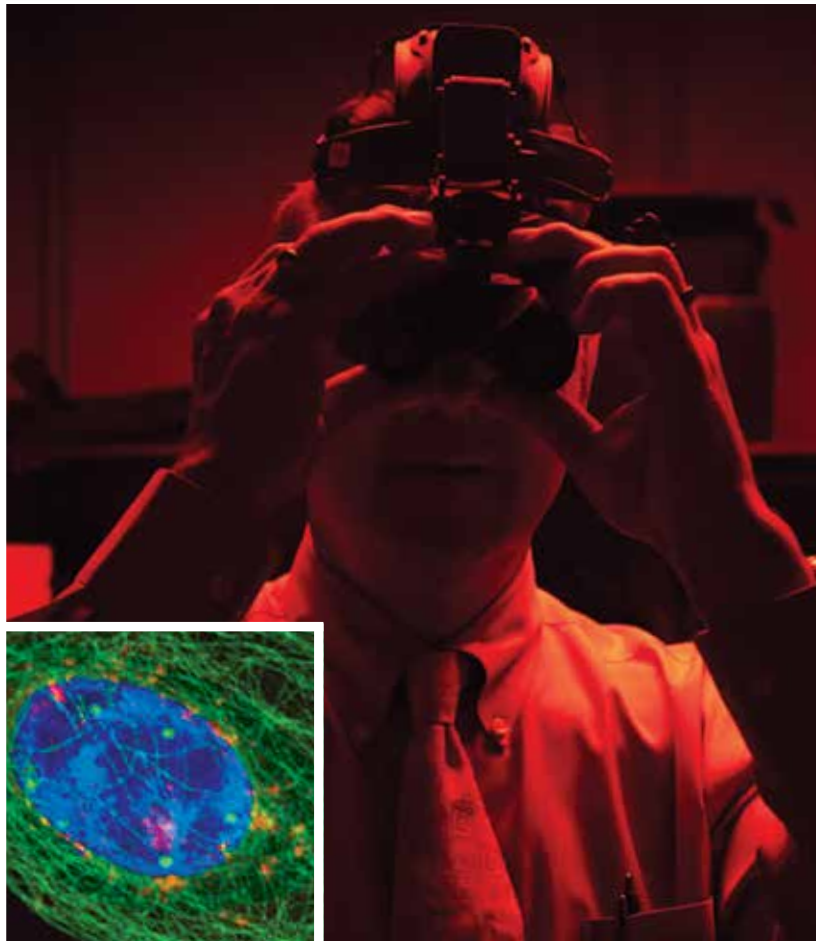


TRANSFORMATION TURNING RESEARCH INTO CURES



UNIVERSITY OF NEW MEXICO HEALTH SCIENCES CENTER VISION, MISSION AND CORE VALUES

VISION

The University of New Mexico Health Sciences Center will work with community partners to help New Mexico make more progress in health and health equity than any other state.

MISSION

Our mission is to provide an opportunity for all New Mexicans to obtain an excellent education in the health sciences. We will advance research in the most important areas of human health with a focus on the priority needs of our communities. We will ensure that all people in our majority-minority state have access to the highest-quality health care.

CORE VALUES

The UNM Health Sciences Center's most important value is a steadfast duty to improve the health of all New Mexicans. We will serve our patients and the public with **integrity**, **accountability** and the highest level of **professionalism**. We will strive as an institution and as individuals to recognize, cultivate and promote all forms of **diversity**; to fully understand the health needs of our communities and to advance clinical, academic and research **excellence**. We are committed to performing our duties with **compassion** and **respect** for our patients, learners and colleagues.

RESEARCH ANNUAL REPORT 2015

Letters

From the Chancellor for Health Sciences	2
From the Executive Vice Chancellor and Vice Chancellor for Research	3
From the Dean of the College of Nursing	4
From the Dean of the College of Pharmacy	5
From the Executive Vice Dean of the School of Medicine	6

Featured Stories

<i>Game Changer: Practice Detailing Tackles Opioid Overprescription</i>	7
<i>Research Renewal: UNM's Clinical and Translational Science Award Extended</i>	8
<i>Promises Kept: UNM Cancer Center Wins Coveted NCI Designation</i>	10
<i>Early Detection: Behavioral Health Screening in a Primary Care Setting</i>	11
<i>Dream Team: Collaborating Across Campus to Treat Brain Injury</i>	12
<i>Signal Achievement: Finding New Ways to Fight a Deadly Infection</i>	14
<i>Protecting Vulnerable Communities: Inhaled TB Vaccine Could Save Millions of Lives</i>	15
<i>Tackling TB: Rapid Diagnostic Test Speeds Treatment</i>	16
<i>Motivating Minors: High-Tech Help in Fighting Adolescent Obesity</i>	18
<i>Volatile Spirits: Exploring the Link Between Alcohol and Partner Violence</i>	19
<i>Research Resource: An Innovative Tool for Understanding Chronic Pain</i>	20
<i>Native Wisdom: Helping to Heal Historical Wounds</i>	22
<i>Time and Trauma: How Early Life Stress Reshapes the Brain</i>	23
<i>From Bench to Bedside: Commercializing Biotechnology One Startup at a Time</i>	24
<i>The Stigma of Mental Illness: Why Military Health Care Providers Don't Seek Help</i>	25
UNM Health Sciences Training Grants	26
Giving Life to Innovation: How Public-Private Partnerships Promote Biotechnology	30
2015 Excellence in Research Awards	32
By the Numbers: UNM HSC Research 2015	34
Contracts and Grants FY 2015	35-60



Paul B. Roth, MD, MS



One of the great things about working at an academic health center is seeing the many ways in which our missions of education, research and clinical care reinforce one another.

Our biomedical research enterprise, which has long focused on developing state-of-the-art diagnostic and therapeutic technology, is also a powerful driver of economic activity in New Mexico.

Each year, UNM Health Sciences Center research activity pumps tens of millions of dollars into the state's economy, supporting hundreds of well-paid, highly skilled jobs.

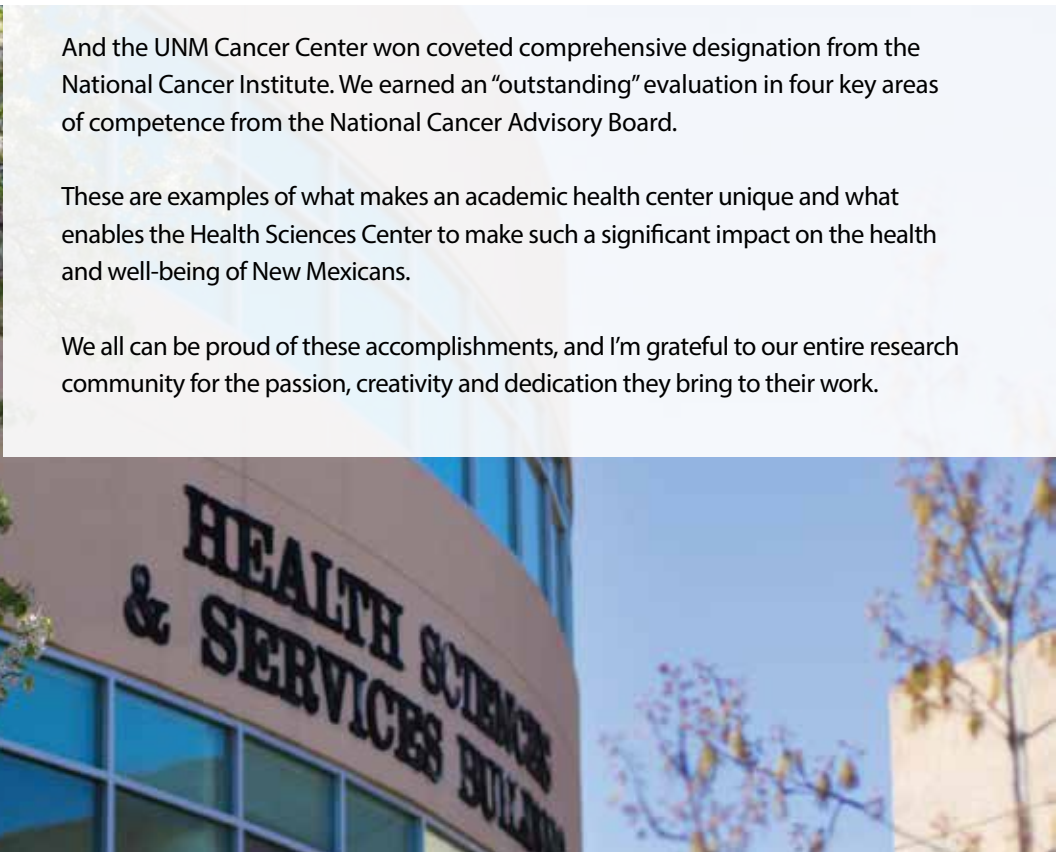
An additional economic boost comes in the form of new private sector biotech startups that are spun off from UNM HSC research innovations. Each of these new startups has the potential to grow into a thriving business, creating more jobs and opportunity in our state.

This year, we were fortunate to see renewal of funding for our Clinical & Translational Science Center, which does a tremendous job of training and mentoring the next generation of researchers, creating a clear pathway to continue building on our successes. Our program was one of only four nationally that had an exceptional score, allowing it to be fully funded.

And the UNM Cancer Center won coveted comprehensive designation from the National Cancer Institute. We earned an "outstanding" evaluation in four key areas of competence from the National Cancer Advisory Board.

These are examples of what makes an academic health center unique and what enables the Health Sciences Center to make such a significant impact on the health and well-being of New Mexicans.

We all can be proud of these accomplishments, and I'm grateful to our entire research community for the passion, creativity and dedication they bring to their work.



FROM THE EXECUTIVE VICE CHANCELLOR AND VICE CHANCELLOR FOR RESEARCH

We did it again! I am pleased to report that the UNM Health Sciences Center continues to make scientific breakthroughs while building its research mission, but in FY 2015 we once again outdid ourselves, securing a record total of \$161 million in funding.

Our funding success is a tribute to the inspired work of our faculty, students and staff, who continue to break new ground in so many areas and have done a terrific job of putting UNM on the map as a center of research and innovation.

This achievement caps more than a decade of continual growth in extramural funding and highlights our focus on developing major new discoveries that improve the health and well-being of New Mexicans.

But that is only part of the story.

The past year also saw the renewal of National Institutes of Health funding for our Clinical & Translational Science Center. The comprehensive designation bestowed on the UNM Cancer Center by the National Cancer Institute is another major achievement. These developments make us one of only 29 institutions in the nation with both a Comprehensive Cancer Center and a Clinical and Translational Science Award.

Adding to the good news, the Brain and Behavioral Health Institute recently won a five-year \$11.6 million grant from the National Institute of General Medical Sciences to develop a new Center for Brain Recovery and Repair.

As you'll read in these pages, our researchers are also finding fresh ways to tackle youth obesity, protecting our communities with new methods for diagnosing and treating tuberculosis and searching for more effective tools to fight deadly MRSA infections.

Stay tuned for further discovery and innovation!



Richard S. Larson, MD, PhD

A handwritten signature in black ink that reads "Richard S. Larson". The signature is fluid and cursive, with the first letters of the first and last names being capitalized and prominent.





Nancy Ridenour,
PhD, RN, APRN, BC, FAAN

Nancy Ridenour

The College of Nursing celebrated its 60th anniversary in 2015, marking a long-standing tradition of providing local and national leadership and innovation with a comprehensive approach to meeting our education, practice and research missions.

Throughout its history, the College has focused on promoting and enhancing health and wellness, along with creative initiatives and strategies to help patients, families and communities manage health challenges.

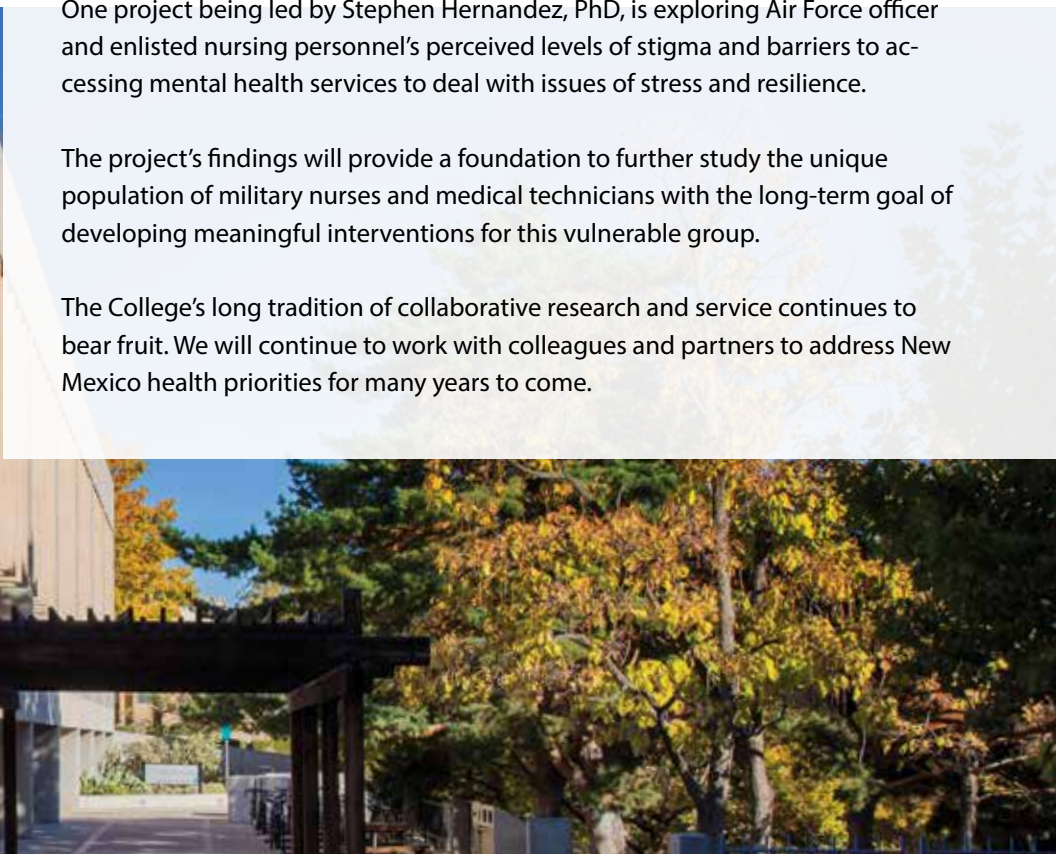
Our research portfolio includes important work in cancer prevention and screening, sleep apnea, pain, respiratory conditions, women's health, childhood asthma and rural health, along with problems affecting particular populations, such as Native Americans and veterans.

College of Nursing faculty serve as leaders and key members of interdisciplinary research teams. They also contribute to local and national initiatives dedicated to advancing the science of health, including UNM's Clinical & Translational Science Center and the federally funded Patient-Centered Outcomes Research Institute. Faculty also hold leadership roles in national and international organizations and share the results of their research widely to extend the impact of their work across New Mexico and well beyond.

One project being led by Stephen Hernandez, PhD, is exploring Air Force officer and enlisted nursing personnel's perceived levels of stigma and barriers to accessing mental health services to deal with issues of stress and resilience.

The project's findings will provide a foundation to further study the unique population of military nurses and medical technicians with the long-term goal of developing meaningful interventions for this vulnerable group.

The College's long tradition of collaborative research and service continues to bear fruit. We will continue to work with colleagues and partners to address New Mexico health priorities for many years to come.



College of Pharmacy scientists are creative visionaries.

With a combined 21 active U.S. patents and another 34 patent applications pending, our faculty researchers are seeking innovative solutions to combat deadly diseases and health issues. Some of their work has led to patents on important inventions to treat melanoma and tuberculosis and to better diagnose pneumonia and other infections.

Our faculty members engage in a wide variety of research that seeks to understand how arsenic and uranium cause disease, how a radiotracer might diagnose appendicitis or better treat asthma – even how smokers might kick the habit without packing on the pounds.

Our scientists are dedicated to advancing human health through better drugs or drug target identification and in clinical settings to achieve better therapeutic outcomes and improvements in health care policies.

Research funding at the College continues to grow. Thanks in part to our “Request-for-Proposals Intramural Pilot Funding Initiative,” which stimulated interdisciplinary collaboration on large-scale grant proposals, research grants and contracts awarded to our faculty members exceeded \$7.1 million last year. We now rank in the top tier of colleges of pharmacy in National Institutes of Health (NIH) funding and in total research dollars.

More than 30 of our faculty members are involved in research. Faculty submitted 80 proposals during FY 2015. Impressively, 50 of these proposals were funded, for a success rate of 63 percent.

This year, a team of environmental health researchers successfully obtained a prestigious NIH P50 grant to establish the Center for Native American Environmental Health Equality Research. The researchers also submitted an NIH P42 Superfund Basic Science Research Center application that will investigate the impact of exposure to toxic metals on human health.



Lynda S. Welage,
PharmD, FCCP





Martha Cole McGrew, MD

A handwritten signature in black ink that reads "Martha Cole McGrew".

The UNM School of Medicine continued its success in growing research funding and programmatic initiatives amid an increasingly competitive environment for research support.

In the fiscal year ending in June 2015 the school set another record in total funding, reaching \$143 million. This represents an increase of \$10 million compared to FY 2014.

National Institutes of Health (NIH) support for research has remained nearly flat over the past five years. Given that and the declining purchasing power of awarded funds, the School of Medicine's success is all the more remarkable.

Two UNM departments, Family Medicine and Pathology, were ranked in the Top 10 in the country among their peer departments for NIH funding. Ten faculty members received more than \$1 million in NIH funding – with three of those receiving more than \$3 million.

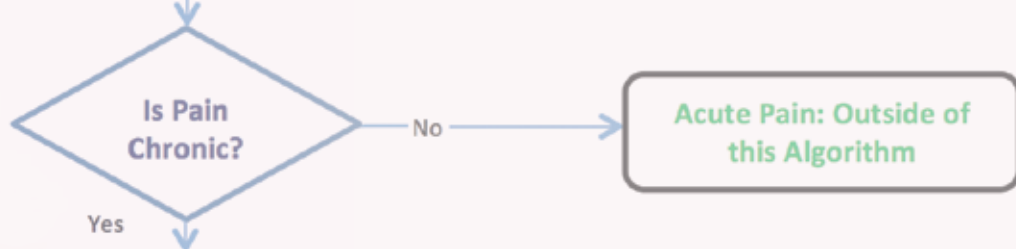
With strong participation from the School of Medicine, the Clinical & Translational Science Center (CTSC) submitted the second-best application nationwide and received NIH funding for its second five-year award.

The CTSC consistently leads in team science, population health and community engagement, often serving as a model for larger institutions. The refunding of the CTSC ensures that this key translational research framework will continue to underpin and support School of Medicine research.

Our six Signature Programs continue to support team science in key areas of health, including cancer, brain and behavioral health, infectious disease and immunity, child health, cardiovascular and metabolic disease and environmental health.

The National Cancer Institute recently bestowed coveted "comprehensive" designation on the UNM Cancer Center. According to the NIH, comprehensive cancer centers demonstrate an added depth and breadth of research, as well as substantial trans-disciplinary research that bridges the scientific areas of basic, clinical and community-based research related to cancer.





Determine possible etiology of pain and contributory co-morbidities

Neuropathic

Musculoskeletal/ Mechanical

Inflammatory

Multiple Etiologies

Examples:

- Central Pain Syndromes (Post Stroke, Complex Regional Pain Syndrome)
- Fibromyalgia
- Behavioral

GAME CHANGER

PRACTICE DETAILING TACKLES OPIOID OVERPRESCRIPTION

People living in rural counties are nearly twice as likely as people in big cities to overdose on prescription painkillers, so it's not surprising that New Mexico, with its wide-open spaces, has one of the highest death rates from prescription opioids in the U.S.

It's a disturbing trend for Robert Rhyne, MD, a professor of Family & Community Medicine and co-director of the Clinical & Translational Science Center's Community Engagement and Research Core.

"Small-town docs are passionately interwoven into their communities, caring for friends and neighbors," Rhyne says. "Entire towns' reliance on their local physicians leaves little time for professional networking, education or advancement. The challenge becomes providing the highest standards of care when geographically isolated."

Rhyne believes that the treatment of chronic noncancer pain (CNCP) such as arthritis, back pain or headaches is a frustrating problem for rural primary care providers. "We're overprescribing pain medication based on a dated medical paradigm," he says.

"Newly established clinical guidelines can take years for adoption into clinical practice," Rhyne adds, "so we're developing a system called practice detailing to deliver the most current evidence-based information in the most usable format for rural practitioners to manage CNCP."

Rhyne's team is conducting a comparative study designed to deliver CNCP guidelines in a toolkit that rural clinicians can – and will – apply to their patients using an algorithm that best fits rural practices.

From that algorithm, developed partly with feedback from community clinicians, the detailed toolkit is continually evolving to provide evidence-based clinical guidelines for treating CNCP patients with and without opioids.

"We're training physicians to better conduct patient assessments and explore treatment options such as physical and behavioral therapy or sleep therapy, surgical interventions, acupuncture and others – with opioids as the final treatment option," Rhyne explains.

"We're adaptive and interactive, using two-way communication to create better information and buy-in from rural practitioners in communities across the state."



Principal Investigator

Robert Rhyne, MD

Professor and Vice Chair of Research,
Department of Family &
Community Medicine

Grant Name

Health Extension Rural Offices:
Translating Research into Localities

Grantor

Agency for Healthcare
Research and Quality



RESEARCH RENEWAL

UNM'S CLINICAL AND TRANSLATIONAL SCIENCE AWARD EXTENDED



Principal Investigator

Richard S. Larson, MD, PhD

Executive Vice Chancellor and Vice Chancellor for Research, UNM Health Sciences Center; Professor, Department of Pathology

Grant Name

UNM Clinical & Translational Science Center

Grantor

National Institutes of Health

The UNM Clinical & Translational Science Center (CTSC) was awarded a five-year, \$23-million grant renewal in 2015 following a fierce national competition.

It received one of the highest scores in the nation, becoming one of only four such centers nationally to receive full Clinical and Translational Science Award (CTSA) funding from the National Institutes of Health (NIH).

This award recognizes UNM's success in conducting innovative, cutting-edge biomedical research that quickly and safely converts fresh ideas into New Mexico clinical practice, says Richard S. Larson, MD, PhD, executive vice chancellor and vice chancellor for research at the UNM Health Sciences Center.

"Through our CTSC, we're bringing state-of-the-art therapies and technologies to our citizens and our families that otherwise wouldn't be available," Larson says. "We're accelerating basic health discovery and ways of delivering care into clinical trials in practices in all 33 counties across the state. It's very exciting."

The CTSC pools essential resources for researchers to more efficiently collaborate, design and conduct their studies, while adding an extensive mentoring program to help young scientists learn to create novel medical innovations.

The CTSC also guides investigative teams who are continually introducing important new medications, diagnostic tools, and best-practice protocols to treat New Mexico patients with complex diseases like addiction, obesity and diabetes.

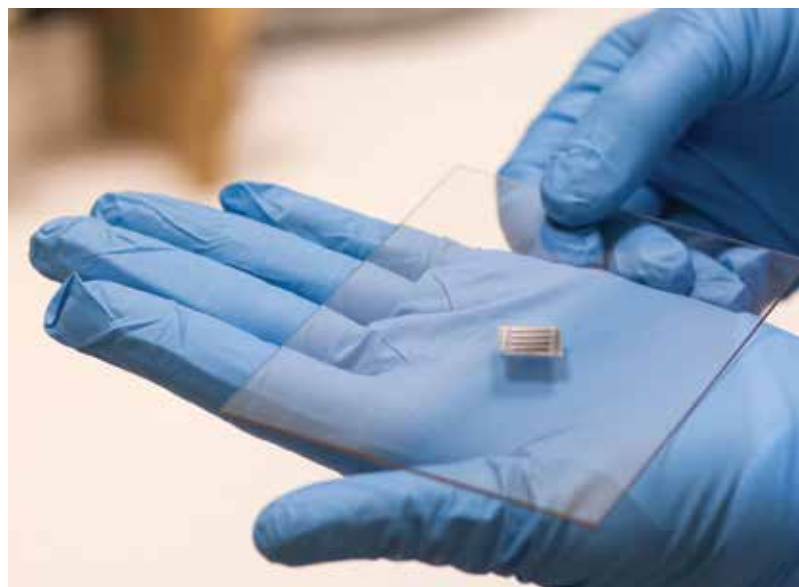
In addition to supporting research by increasing laboratory space, cultivating junior researchers, offering regulatory and legal guidance

and directing technology and resources, the CTSC will launch new programs to improve innovative study designs, direct prototype development and steer promising results through the commercialization process.

UNM's biomedical research has delivered discoveries in many areas, including infectious disease, metabolic disorders and substance abuse. More than 500 CTSC researchers and support staff have led the way in developing vaccines for deadly infections like drug-resistant tuberculosis, Larson says. They currently conduct 125 clinical trials across every New Mexico county, along with extensive community-based research throughout the state.

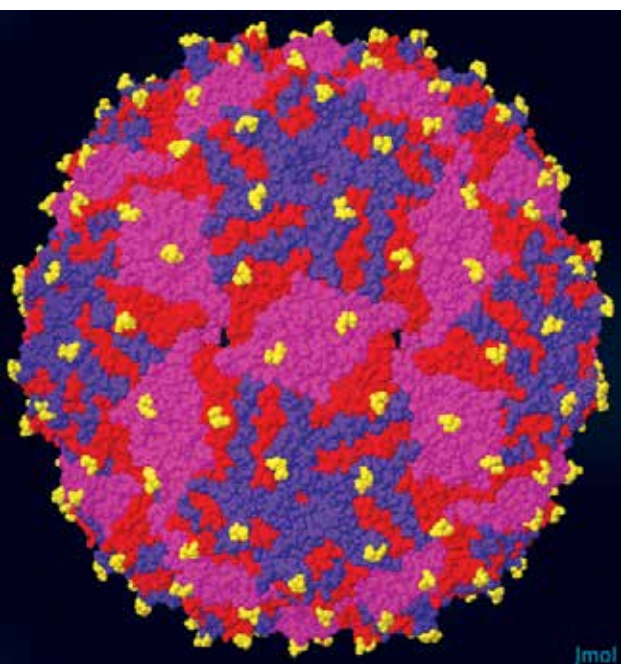
The NIH introduced the CTSA network in 2006 to speed new drug therapies, vaccines and diagnostic tools through the developmental pipeline from bench to bedside. UNM first joined the CTSA consortium in 2010, becoming one of just 62 universities in the country with a program to convert basic laboratory discoveries into medical therapies and devices that make a real difference in patients' lives.

"Our first five years provided a sturdy foundation on which to expand our effectiveness in developing new health and treatment concepts, and seeing them all the way through to actual patient care," Larson says. "In the future we'll be adding to CTSC's scope and focus, particularly in the areas of translational workforce development, multi-site study support, participant recruitment and CTSA consortium-wide initiatives."



In addition to its tremendous economic contribution to New Mexico – nearly 40 biotech businesses have spun off from research conducted at UNM over the past decade – the renewed CTSA represents UNM HSC's ascendance into the higher tier of academic health centers nationally, Larson adds.

"Perhaps most importantly, the CTSA enables us to conduct meaningful research that brings hope to our patients throughout the state," he says. "This accomplishment demonstrates the terrific progress we have made in just five years as a CTSA recipient. We are excited to contemplate the many new advances in coming years that will benefit New Mexicans."





PROMISES KEPT

UNM CANCER CENTER WINS COVETED NCI DESIGNATION

"Fifteen years ago, we made a promise to be of service to the people of New Mexico and to overcome New Mexico's cancer burden," says Cheryl Willman, MD.

"To do that, we sought to be one of the nation's very best: a National Cancer Institute-designated comprehensive Cancer Center," says Willman, director and CEO of the UNM Comprehensive Cancer Center. "And we delivered!"

The Cancer Center underwent a rigorous process to achieve its comprehensive designation last summer. The highly sought-after designation recognizes the center's achievements in four areas: providing integrated cancer diagnosis and treatment, providing access to national clinical trials, conducting world-class cancer research and educating the next generation of cancer health care and scientific professionals.

UNM's cancer research is supported by more than \$72 million in annual extramural funding and takes advantage of regional scientific and engineering strengths. Cancer Center scientists collaborate with colleagues at Sandia National Laboratories, Los Alamos National Laboratory and the Lovelace Respiratory Research Institute.

UNM scientists also work with researchers at New Mexico State University. These collaborations have led to breakthroughs in targeted therapies and cancer diagnostics.

The UNM Comprehensive Cancer Center also conducts clinical research. As part of the Oncology Research Information Exchange Network, it is launching a program to offer patients an opportunity to have their cancer tumors sequenced to benefit not only cancer research but also themselves when newer, better treatments become available.

In addition, the Cancer Center's NCI Community Oncology Research Program grant supports access to clinical trials in diverse communities throughout the state, helping patients and cancer scientists alike.



Principal Investigator
Cheryl Willman, MD
Director and CEO,
UNM Comprehensive Cancer Center

Grant Name
P30 Cancer Center Support Grant

Grantor
National Institutes of Health/
National Cancer Institute



EARLY DETECTION

BEHAVIORAL HEALTH SCREENING IN A PRIMARY CARE SETTING

In the substance use and mental health world, researchers know that early detection and treatment can greatly improve outcomes. In New Mexico these conditions often go untreated because of stigma and lack of access due to the limited behavioral health workforce.

Deborah Altschul, PhD, aims to address these challenges head-on with her New Mexico Screening, Brief Intervention and Referral to Treatment program.

“Most people already go to primary and urgent care for other health issues,” she says. “Our goal is to infuse behavioral health into these settings. That way, treatment is easily accessible in nonthreatening settings.”

Each of the grant’s sites houses a behavioral health provider along with a certified peer support worker. Every patient undergoes a universal screen that takes only minutes to complete.

If the screen is positive for substance abuse, depression, anxiety or trauma, patients are immediately introduced to the behavioral health team for further assessment and treatment. “This increases access to convenient, evidence-based treatment,” Altschul says.

Altschul and her team collect data on every person who is screened. They follow 20 percent of the patients who screen positive every six months for two years to evaluate whether this approach effectively integrates behavioral health into primary care settings.

“By putting screening and treatment where people already are comfortable seeking help, we hope to catch substance abuse and mental health issues before they become big problems,” Altschul says.

“Additionally, given our state’s limited behavioral health workforce and health disparities, this research has major implications for public health in New Mexico.”



Principal Investigator

Deborah Altschul, PhD

Assistant Professor and Division Chief, Community Behavioral Health, Department of Psychiatry and Behavioral Sciences

Grant Name

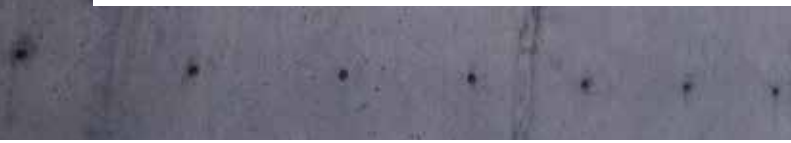
New Mexico Screening, Brief Intervention and Referral to Treatment

Grantors

Substance Abuse and Mental Health Services Administration, New Mexico Behavioral Health Services Division

DREAM TEAM

COLLABORATING ACROSS CAMPUS TO TREAT BRAIN INJURY



Principal Investigator

Bill Shuttleworth, PhD

Director, UNM Brain & Behavioral Health Institute, Regents' Professor, Department of Neurosciences

Grant Name

UNM Center for Brain Recovery and Repair

Grantor

National Institutes of Health/National Institute of General Medical Sciences

The human brain – containing some 86 billion neurons (and trillions of connections among them) – is the most intricate known structure in the universe. A special team is needed to tackle this complexity and devise new treatments for neurological diseases and injuries.

UNM's Brain & Behavioral Health Institute (BBHI) takes a multidisciplinary approach to attacking brain-related problems, bringing together researchers from across campus, including the departments of Neurology, Neurosurgery, Neurosciences and Psychiatry and Behavioral Sciences.

"Research and education have traditionally been quite compartmentalized," says BBHI director Bill Shuttleworth, PhD, Regents' Professor in the Department of Neurosciences and associate director of the Clinical & Translational Science Center. "BBHI dramatically changes the dynamic. We have an opportunity to leverage each other's expertise to enrich research programs and be more responsive to national funding opportunities."

One example is the competitive five-year \$11.6 million federal grant that BBHI recently secured to establish a new Center for Brain Recovery and Repair. The grant from the National Institute of General Medical Sciences will fund five junior investigators to launch new research into brain stimulation techniques and ways of regenerating brain tissue.

The money will also help provide research support. "We're a platform to facilitate diverse programs that address brain health across the lifespan," Shuttleworth says. "This is one of BBHI's key achievements to date."

BBHI is committed to tailoring its patient-centered research to meet the unique needs of New Mexicans. Starting in 2013, BBHI faculty spent 18 months meeting with individuals and advocacy organizations to find out what mattered most to them.



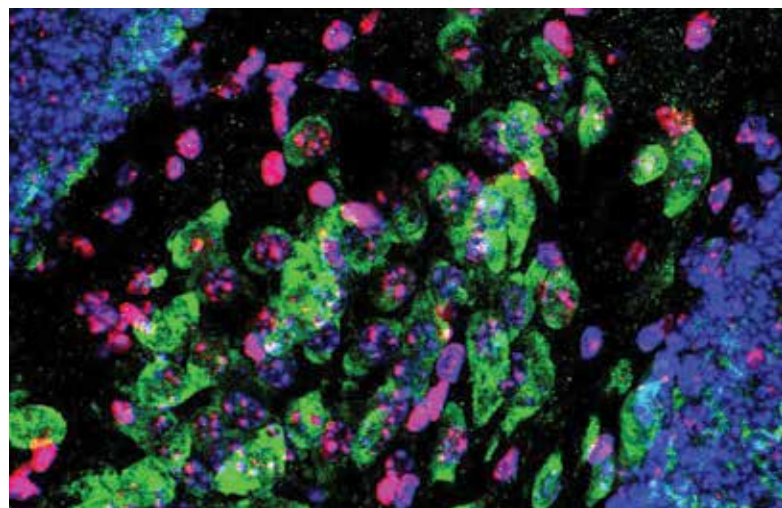
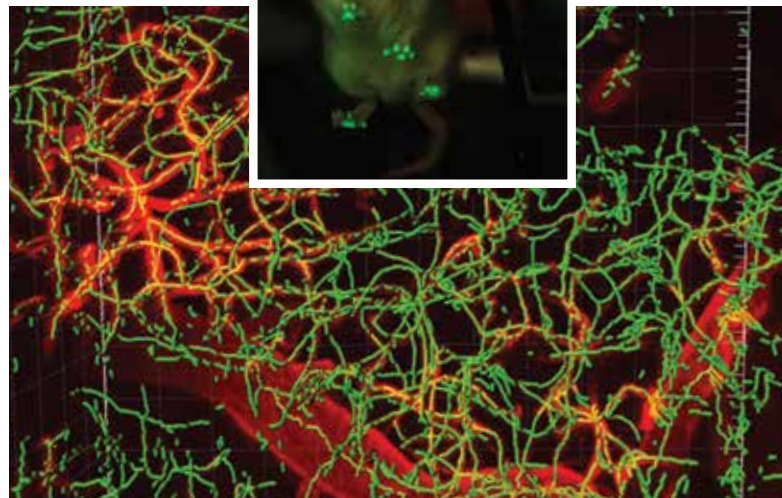
Community groups “are really the engine pulling the train,” Shuttleworth says. He credits the New Mexico Brain Network, a coalition of patient advocacy organizations, with helping to shape the research agenda. “They helped us develop a meaningful program.”

Network representatives will be included in steering committees to help shape the center’s development, he says. The group has been meeting monthly and is also working with the Alan Alda Center for Communicating Science at Stony Brook University.

The Alda Center generally focuses on teaching scientists to communicate with the public, but the New Mexico advocates have helped flip the paradigm; now, the center has become interested in teaching scientists how to listen to laypeople. This work is funded by a federal Patient-Centered Outcomes Research Institute award to BBHI to facilitate progress in Alzheimer’s disease, cerebral cavernous malformations and autism.

“We’re trying to do something special,” Shuttleworth says. “We’re trying to pull people together from very different groups across campus. People have been working on brain disorders at UNM for decades and there has been a pent-up feeling that we could do more collaboratively, across disciplines.”

BBHI is making progress in its research, Shuttleworth says. “It has an ambitious agenda. But, still, there’s a lot of hard work to do to break down some of those barriers. We’re looking for opportunities to collaborate.”



Featured on **HSC**TV
<https://vimeo.com/hsctv/bbhi>



SIGNAL ACHIEVEMENT

FINDING NEW WAYS TO FIGHT A DEADLY INFECTION

The Centers for Disease Control lists Methicillin-resistant *Staphylococcus aureus* (MRSA) as a top threat to human health and have called for a national strategy to combat it. At UNM, Pamela Hall, PhD, and her research team are doing their part, looking for a new way to defeat MRSA.

It is an important battle. In the past, MRSA was known as a hospital-acquired disease, striking patients who have compromised immune systems. But even healthy people – from kids to pro-football players – can contract it. The past few years have seen the drug-resistant germs evolving faster and faster, Hall says.

“It is going to take a multi-level offensive to defeat MRSA,” says Hall, an assistant professor in the College of Pharmacy’s Department of Pharmaceutical Sciences. “But if we can find the means to disarm the bacteria, then we can defeat them.”

Bacteria become drug-resistant when a few germs survive exposure to an antibiotic. Killing off their competition actually makes it easier for the remaining germs to multiply.

Hall’s lab is testing anti-virulence signaling strategies. If vaccines can be developed that block the bacteria’s ability to recognize and communicate with each other, they won’t become activated and begin to colonize – meaning no infection to eradicate and no chance of resistance developing.

Hall and her team have found that targeting virulence regulation systems can actively protect from MRSA. The next step is gaining a better understanding of how the vaccine will perform against different types of MRSA.

The stakes are high. A future without effective strategies to battle MRSA would mean a step back to the pre-antibiotic world, where even a small cut could be catastrophic.



Principal Investigator

Pamela Hall, PhD

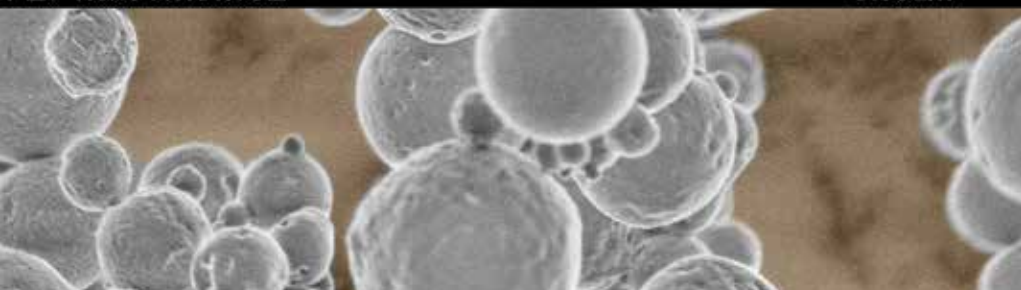
Assistant Professor,
Department of Pharmaceutical Sciences

Grant Name

Apolipoprotein B and Control of *S. aureus*
Quorum Sensing

Grantor

National Institutes of Health



PROTECTING VULNERABLE COMMUNITIES INHALED TB VACCINE COULD SAVE MILLIONS OF LIVES

Dominique Price wants to wage a war on tuberculosis with a vaccine that works.

“I am extremely motivated,” says Price, a postgraduate student in the Department of Pharmaceutical Sciences.

TB is one of the world’s deadliest contagious diseases – 9 million people developed the disease in 2009, and 1.5 million died from it – but most fatalities are preventable.

The current injectable vaccine, known as Bacille Calmette-Guerin or BCG, is used in more than 100 countries, but it provides little protection in most hard-hit areas of the world, including Southeast Asia and Africa.

“It does not generate a strong immune response in the lungs, the prime region where we need the immune cells,” says Pavan Muttli, PhD, an assistant professor in Pharmaceutical Sciences.

“We could treat the disease by giving a vaccine directly into the lungs,” adds Muttli, the principal investigator of a study designed to develop a better TB vaccine.

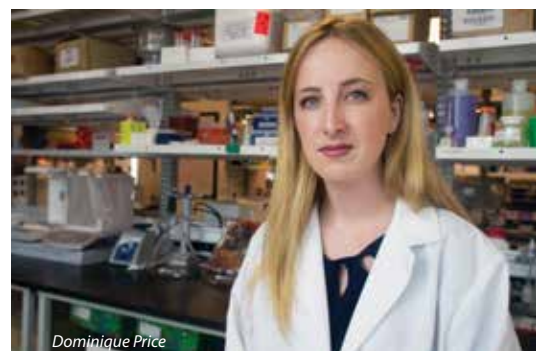
Price and Muttli’s research suggests that the BCG vaccine’s ineffectiveness is partly due to people’s exposure to non-tuberculosis mycobacteria in soil and water.

The body develops ways to “compartmentalize immunity” by triggering an immune response to some pathogens while avoiding a response to others that are not necessarily harmful to the body, Price says. But the mycobacteria, which belong to the same family as tuberculosis, confuse the immune system, rendering the injectable vaccine less effective.

Price tested in mice whether a dry powderized form of the vaccine could provide better protection if delivered directly to the lungs.

Mice exposed to mycobacteria got sick after receiving the current BCG vaccine through the skin. But when they received a vaccine via the lungs, the mice developed an effective immune response.

“The mice were able to fight off the bacteria,” Price says. “That is really exciting.”



Dominique Price

Principal Investigator

Pavan Muttli, PhD

Assistant Professor, Department of Pharmaceutical Sciences, College of Pharmacy

Co-Investigator

Dominique Price

Biomedical Sciences Graduate Program Doctoral Candidate, Department of Pharmaceutical Sciences

Grant Name

Pulmonary BCG Immunization for Uniform Protection Against TB

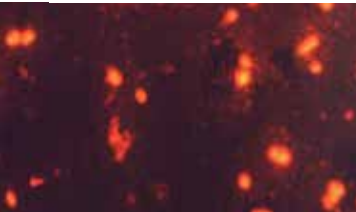
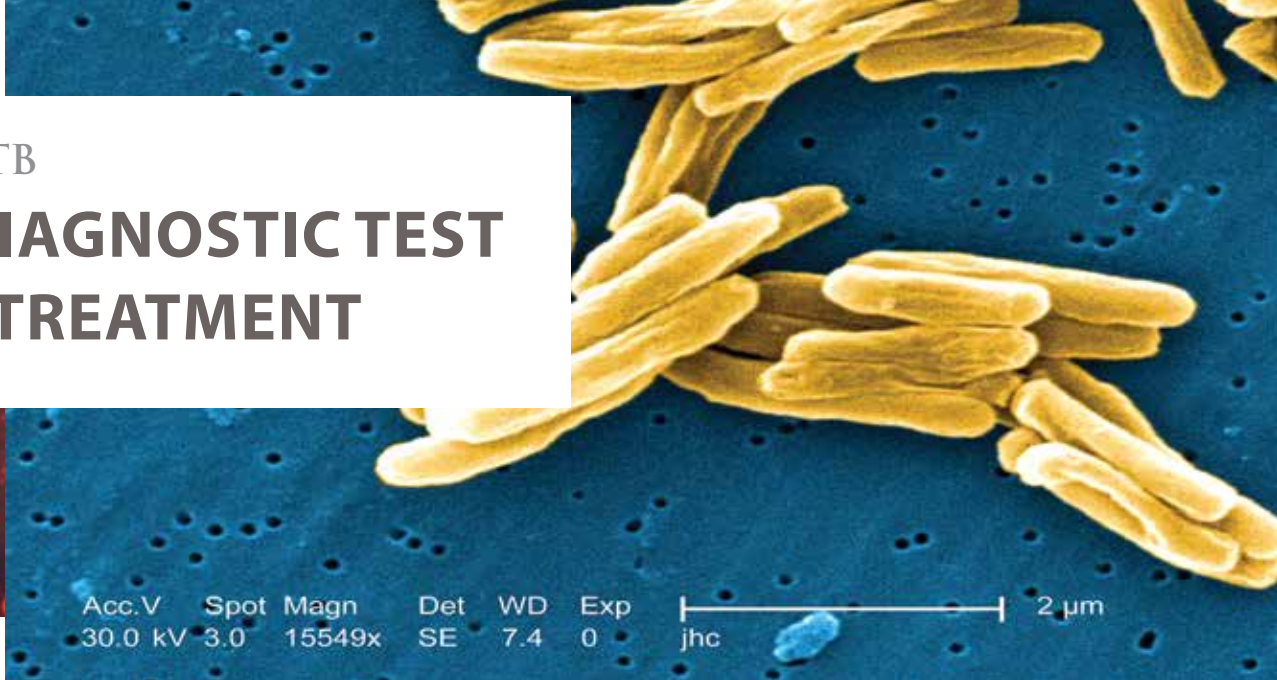
Grantor

Bill and Melinda Gates Foundation Grand Challenges Exploration; College of Pharmacy

Featured on **HSC TV**
<https://vimeo.com/hsc/price>

TACKLING TB

RAPID DIAGNOSTIC TEST SPEEDS TREATMENT



Principal Investigator
Graham Timmins, PhD
Associate Professor, Department
of Pharmaceutical Sciences

Grant Name
Pyrazinamide Breath Test for TB

Grantor
National Institutes of Health/
National Institute of Allergy and
Infectious Diseases

“What I kind of do is put unusual things together,” says Graham Timmins, an associate professor in the College of Pharmacy’s Department of Pharmaceutical Sciences.

It’s a modest statement from a researcher who holds seven UNM-affiliated patents that involve innovative technology to quickly diagnose tuberculosis and other lung infections.

Another Timmins patent proposes a more effective treatment for TB, and yet another involves evaluating sunscreens for their protection against all potentially damaging solar radiation.

His research focuses on using stable isotope-related compounds and free radical biology – the unusual things he puts together – to better diagnose and treat some common and deadly diseases.

Asked which of those patents he is most proud of, Timmins groans. “Ahh,” he says. “It’s like which of your children do you love the most?”

Let’s start with his rapid breath-test technology, known as the urease breath test. Ureases are bacterial enzymes that are expressed by many bacteria. “If you look at serious lung pathogens,” Timmins says, “most of them have it.”

Timmins’ stable isotope-labeled tracer compound, inhaled by a patient through a nebulizer or inhaler, fills the entire lung. It detects and identifies different infections upon exhalation – and does so within minutes.

“You can screen for tuberculosis,” Timmins says. “You can see if somebody’s got pneumonia. You might be able to see the difference between viral and bacterial pneumonia.”

His rapid breath-test technology patents have led to the creation of a company, Avisa Pharma, headquartered in Santa Fe. The company has raised \$8 million and its first clinical development is focusing on using



Timmins's rapid breath test for TB with plans to expand research into pneumonia and cystic fibrosis.

If there is a theme to Timmins' work, it is speed.

"What we're trying to do is have a very, very rapid screening test for TB so the whole thing could be over in five or 10 minutes," Timmins says. The fastest TB diagnostic test now takes three hours and the technology it uses is relatively un-portable.

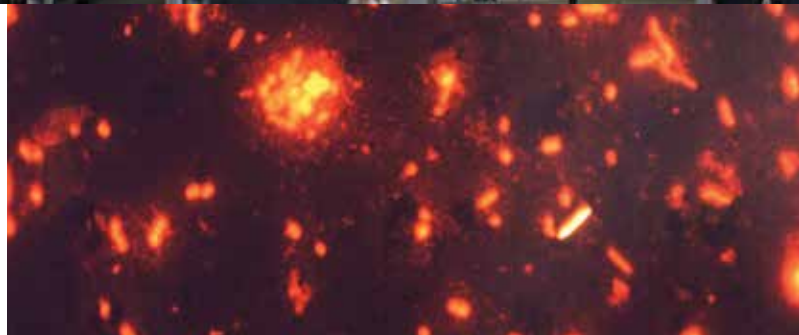
TB is most common in developing countries where transportation is limited – it can take a full day for a patient to travel to a clinic or a clinician to travel to a rural area to conduct testing.

"With this," Timmins says, "you could put everything in a backpack and you could just cycle to a village and test a whole lot of people. If somebody can be diagnosed and have their drug susceptibility determined in that single encounter, then you don't lose them to follow-up. That's a major improvement."

The test, which has worked in 10 minutes in animal trials, could have a huge impact: the disease infects millions of people worldwide and results in 1.5 million deaths each year.

"Sometimes," Timmins says, "it's just speed. You can potentially diagnose earlier in the processes, with the assumption that if you can intervene earlier there'll be a better outcome."

Another of his innovations modifies an existing TB drug with stable isotopes to improve its infection-fighting effectiveness. "It's very, very complex," Timmins says. "It's taken me seven or eight years to figure it out."



Yet another patent addresses the efficacy of sunscreens in protecting against melanoma. Sun Protection Factor ratings only measure protections against ultraviolet radiation, not all of the potentially damaging wavelengths. Timmins' patent involves analyzing a sunscreen for all the potential melanoma protection factors.

And another involves using the breath test to rapidly diagnose *pseudomonas aeruginosa* in cystic fibrosis patients. Once it is established, it's a very difficult infection to eradicate, but when caught early it can be eliminated. Timmins hopes the test will significantly improve the lives of some cystic fibrosis patients.

Timmins, who joined UNM in 2001, has been recognized many times for his research accomplishments. In 2013 he received the STC.UNM Innovation Fellow Award thanks to his prolific record.

While accolades and patents are prestigious and pharmaceutical companies may show profit, Timmins says the questions that underlie the research are his real motivators.

"The reason you do it is to get at these questions," Timmins says. "Most smart people just like working problems."



MOTIVATING MINORS

HIGH-TECH HELP IN FIGHTING ADOLESCENT OBESITY



Teenagers love high-tech gear, so it makes sense to use the latest gadgets to improve their health.

But few studies have been done on using technology to motivate teens to become more active and lose weight, says Jeanne Dalen, PhD, research assistant professor in the Office of Pediatric Research.

Dalen and her team studied three different brands of activity trackers – devices that record data such as steps taken, heart rate and calories burned. “Researchers usually use these just to collect data,” she says. “We began to ask if fitness trackers are motivating in and of themselves.”

The challenge is a major one: 35 percent of U.S. teenagers are overweight and one in six has metabolic syndrome.

In a recent study Dalen divided adolescents ages 11-16 into three groups. Each tested three different trackers for several weeks.

“We wanted to know if they would wear them and what they would like,” Dalen says. “Fitness trackers are beginning to be paired with motivational websites, so people can really start to become engaged on a social level and on a motivational level, using computer technology.”

Dalen is also studying the effectiveness of a meditation-based mindful eating program for teens. “This may represent a unique scientific approach to the current adolescent obesity epidemic,” she says.

Her team has identified an unexpected barrier to adolescent enrollment, though.

“We are seeing success once families are enrolled and begin to experiment with eating mindfully together at mealtime,” she says. “But sometimes the last thing a teenager is going to want to do is anything that their parent thinks is a good idea.”



Principal Investigator

Jeanne Dalen, PhD

Research Assistant Professor,
Office of Pediatric Research

Grant Name

Adaptation and Evaluation of a Family-Based Mindful Eating Intervention for Overweight Adolescents

Grantor

National Institutes of Health/National Center for Complementary & Alternative Medicine

Featured on **HSC TV**
<https://vimeo.com/hsctv/dalen>

VOLATILE SPIRITS

EXPLORING THE LINK BETWEEN ALCOHOL AND PARTNER VIOLENCE

Intimate relationships are complex, fueled by biology, chemistry, emotions, environment and upbringing. Mixing in alcohol with often contentious issues such as finances, child rearing or in-laws can quickly ignite domestic violence.

Intimate partner violence is a big problem in the U.S. An estimated 22.4 million physical assaults are committed every year, costing \$6.2 billion in direct medical and mental health services alone.

Investigator Brandi Fink, PhD, a KL2 Scholar in the Clinical & Translational Science Center, believes that alcohol-induced over-arousal plays a crucial role in heightening patterns of violence between couples.

"Fifty to 75 percent of partner violence incidents involve one or both partners under the influence of alcohol," she says. "You can't study partner violence without studying the effects of alcohol."

Alcohol-induced over-arousal reflects changes in heart rate, respiration, skin conductance and brain responses that Fink hypothesizes play a crucial role in triggering partner violence.

Fink's study compares the arousing effects of alcohol amid conflict, as well as the different responses in emotion regulation between violent and nonviolent partners.

She's applying rigorous screening, interviewing and coding, precise demographic and psychophysiological data collection and EEG neuroimaging measures to her carefully selected sample.

Current partner violence interventions rarely address alcohol use and can be tainted by cultural assumptions, Fink says. They often focus on males, based on the belief that the male is always the aggressor.

"In fact, there are over 200 studies that show both genders are equally violent," she says. "And when only one partner is violent, it's more often the female. By blending psychology, psychiatry and clinical neurosciences research methods, we have teamed to scientifically dissect this serious public health issue that destroys New Mexico families."



Principal Investigator

Brandi Fink, PhD

Assistant Professor,
Department of Psychiatry and
Behavioral Sciences

Grant Name

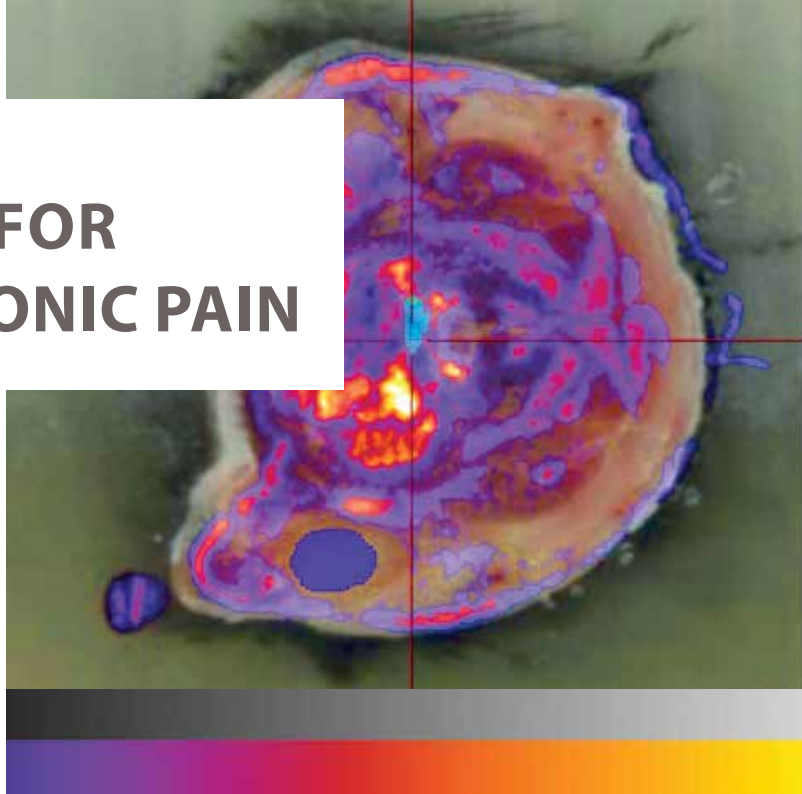
Overarousal as a Mechanism
Between Alcohol Use and
Intimate Partner Violence

Grantor

UNM CTSC; National
Institutes of Health/
National Center for Research
Resources; NIH/National
Center for Advancing
Translational Sciences

RESEARCH RESOURCE

AN INNOVATIVE TOOL FOR UNDERSTANDING CHRONIC PAIN



Principal Investigators

Hugh Martin, MD
Chair, Department of
Anesthesiology and Critical Care

Erin Milligan, PhD
Associate Professor,
Department of Neurosciences

Jeffrey Norenberg, PhD
Professor and Director of
Radiopharmaceutical Sciences

Grant
UNM Anesthesiology Pain
Research Laboratory

Grantor
UNM Clinical & Translational
Science Center

Every creature with a nervous system experiences discomfort from time to time – but severe chronic pain presents a special kind of suffering.

A multidisciplinary team of UNM researchers is tackling this problem with the help of a new, state-of-the-art laboratory that will help them pinpoint how the nervous system responds to potential therapies.

“We want to focus on pain mechanisms,” says Hugh Martin, MD, chair of the Department of Anesthesiology and Critical Care, who spearheaded construction of the new facility. “What are the deep-down neuronal injuries when you have a bone spur that constricts a nerve that comes out of the spinal cord?”

The Anesthesiology Pain Research Laboratory is specially equipped to examine the bio-distribution of novel pain drugs, says Erin Milligan, PhD, an associate professor in the Department of Neuroscience. An animal is administered a candidate drug tagged with a radioisotope compound.

Its tissues are sectioned into ultra-thin 5-micron slices that are imaged and digitally stored. When these images are overlaid with a radioisotope image using special software, scientists can create a 3-D picture showing how much of the drug has been absorbed and where in the body it is concentrated.



It's a big step toward developing a competitive program in the hunt for non-opioid alternatives for pain relief, Milligan says. "We don't have anything in the Southwest like that. New Mexico would benefit tremendously from having a pain research center."

This research traditionally has focused on nerve cells and how they communicate with one another, but Milligan is looking elsewhere. She is studying how, in chronic pain patients, pro-inflammatory immune cells flock from the site of an injury to portions of the spinal cord. "These regions in the spinal cord are critical to pain processing," she says.

She is testing BIRT-377, a drug that could block immune cells from triggering the inflammation that drives chronic pain. That's where Jeffrey Norenberg, PhD, comes in. A professor in the College of Pharmacy and an expert in pharmacodynamics, he has patented a radioisotope-tagged version of the drug.

Norenberg is excited by the new lab's technical capabilities. "It's the marriage of the equipment for collecting the slices to the software to the analysis that makes it state-

of-the-art," he says. "You're not going to see anything like this. That's what makes it a very unique laboratory."

In the new lab, he adds, "We can do noninvasive in vivo imaging using functional probes. We can also drill down to the tissue and even cellular level in this lab. There are certain questions you can only answer when you get into a complex system."

The lab is available to other UNM faculty who are studying neuro-immune conditions, Milligan says. "They are very interested in dovetailing with Hugh's lab. It's going to be a very multidisciplinary research program."

Meanwhile, the insights gained from collaborating with Martin and Norenberg help Milligan connect basic science research to patient needs, she says.

"We don't want to be in an ivory tower," she says. "We really want to be one step from the clinic, all the time. What are the practical clinical problems that are observed in your patients on a routine basis? Hugh's clinical faculty tell me what's practical, what's not practical and what is desperately needed."





credit: State Historical Societies of North and South Dakota



NATIVE WISDOM HELPING TO HEAL HISTORICAL WOUNDS

“I am a woman on a mission,” Maria Yellow Horse Brave Heart says, recalling how a word of encouragement from an elder on the Standing Rock Sioux Reservation in North and South Dakota set her on the path to earning her PhD in clinical social work.

Decades later, Brave Heart, a research associate professor in the Department of Psychiatry and Behavioral Sciences, is working to help heal American Indians suffering from historical trauma arising from centuries of genocide.

She leads the Iwankapiya-Healing study. Funded by the National Institute of Mental Health, it compares a 12-week course of group interpersonal therapy (IPT) sessions with 12 sessions that combine IPT with the Historical Trauma and Unresolved Grief intervention that Brave Heart developed. The study takes place at a Northern Plains reservation and an urban Southwestern reservation outpatient behavioral health setting.

One example of historical trauma is the government policy, enforced as recently as the 1970s, of forcibly separating American Indian children from their parents and shipping them off to boarding schools. “In the Dakotas, the boarding schools were notoriously abusive or perceived as abusive by people,” says Brave Heart, who is Hunkpapa and Oglala Lakota. “What we do is talk about the impact of boarding schools on our people and the traumas that emerge from that.”

Exposure to multigenerational trauma leads to heightened risk for a laundry list of emotional problems, Brave Heart says. “PTSD, depression anxiety, difficulty sleeping – all of those kinds of things are framed in reaction to this massive group trauma and how it’s been passed on.” Addressing this trauma in a therapeutic setting “de-stigmatizes,” she says. “It communicates that you’re not alone in this.”

Participants come to realize that what they’re feeling isn’t their fault, she says. It also yields understanding – and perhaps forgiveness – for one’s parents, grandparents and great-grandparents. “People are more open to looking at what’s going on for them now.”



Principal Investigator

Maria Yellow Horse Brave Heart, PhD

Associate Professor, Department of Psychiatry and Behavioral Sciences

Co-Investigator

Josephine Chase, PhD

Oglala Lakota College

Grant Name

Iwankapiya-Healing: Historical Trauma Practice and Group IPT for American Indians

Grantor

National Institutes of Health/
National Institute of Mental Health



TIME AND TRAUMA

HOW EARLY LIFE STRESS RESHAPES THE BRAIN

“If you could have the biggest impact in the world,” asks Elaine Bearer, MD, PhD, “where would you start?”

Bearer, a professor in the Department of Pathology in the UNM School of Medicine, is answering that question by studying how childhood trauma affects the developing brain. Her research comes amid a virtual epidemic of violence against children.

In 2012, 686,000 American children were victims of maltreatment and more than 1,600 of them died from abuse and neglect, according to the U.S. Department of Health and Human Services.

In animal studies, Bearer showed that adverse experience can permanently affect emotional circuitry. This may result from epigenetic changes, in which gene expression is altered without affecting the inherited DNA sequence. These changes involve a biochemical process called DNA methylation.

Bearer’s study suggests persistent stress changes children’s brains. “Traumatic experience appears to induce changes in the epigenetic pattern of DNA methylation in the brain,” Bearer says.

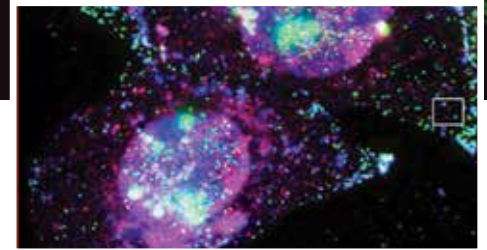
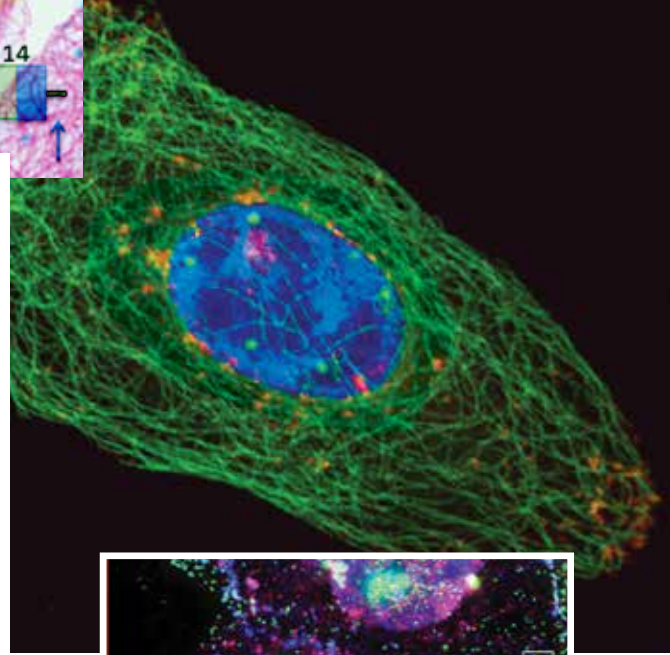
Bearer focused on methylation of the serotonin transporter gene, extending this analysis to subsets of the 1 billion potential methylation sites in the human genome. Serotonin is a neurotransmitter that plays an important role in regulating emotion.

More than 25,000 methylation sites were significantly altered in children with autism, she found. Many of these changes could be detected in both saliva of living children and the post-mortem brains of children with autism.

“Eight percent of the altered methylation sites found in children correlated with altered sites in the brain,” Bearer says. “Saliva gives us a read-out of what’s happening in the brain.”

The changes indicated abnormal gene expression that could interfere with the development of a young brain.

With these promising findings, Bearer’s goal is to discover biomarkers that could help identify traumatized children early and channel them quickly into intervention programs. “I would like to find a way to heal these children,” she says.



Principal Investigator

Elaine L. Bearer, MD, PhD
Professor, Department of Pathology

Co-investigator

Julia Stephen, PhD
Adjunct Associate Professor,
Department of Neurosciences

Grant Names

DNA Methylation in Translational Studies of Early Life Stress: A Feasibility Study; Live Imaging of Functional Circuitry in Mouse Models of PTSD

Grantor

National Institutes of Health/
National Institute of Mental Health and UNM CTSC



FROM BENCH TO BEDSIDE COMMERCIALIZING BIOTECHNOLOGY ONE STARTUP AT A TIME

UNM Health Sciences Center researchers continually seek new cures and treatments to improve health and save lives.

One sign of their success is the number of patents they receive: UNM ranks 42d in the world in number of patents issued, with UNM HSC accounting for a large part of the total.

What is often overlooked is the economic impact of that research, which has led to 38 new business startups in New Mexico over the past decade, creating new jobs and boosting the state's economy.

The pace of UNM HSC-related business development has been picking up in recent years, with four new ventures



Elizabeth Kuuttila
President and CEO, STC.UNM

being launched in FY 2015, says Elizabeth Kuuttila, president and CEO of STC.UNM, the non-profit corporation chartered by the Board of Regents to promote technology transfer on behalf of the university.

Albuquerque's Exovita Biosciences is developing technology pioneered by Kristina Trujillo, PhD, research assistant professor in the Department of Cell Biology and Physiology, that uses exosomes – small, fluid-filled packets – to kill cancer cells without harming healthy cells.

New Mexico-based terraSOL is honing analytical software created by Glen Murata, MD, professor in the Department of Internal Medicine, to improve care for people with chronic diseases.

GHP Development, a Colorado company, has licensed a device developed by Mark Hauswald, MD, professor emeritus in the Department of Emergency Medicine, that allows emergency room patients to safely control how much narcotic pain medication they receive.

A new approach to automated flow cytometry is among several new UNM-developed technologies licensed to ieCrowd, a California biotech development group.

The average salary for employees of these companies is generous – in the \$70,000 to \$80,000 range, Kuuttila says. It doesn't hurt that many of those hired by the firms were educated at UNM.

"It's great for the economy," she says, "and it's great for our students, too."



THE STIGMA OF MENTAL ILLNESS

WHY MILITARY HEALTH CARE PROVIDERS DON'T SEEK HELP

If you were a soldier, how likely would you be to trust the person next to you if you knew he or she had recently been in counseling? If ordered into combat under the command of an officer with an anger problem, would you feel better or more uneasy knowing it was serious enough for him or her to seek counseling?

“Our military forces are highly trained and we don’t want to lose them due to stress,” says Stephen Hernandez, PhD, RN, assistant professor in the UNM College of Nursing. “But traditionally, there has been a stigma to someone seeking out mental help.”

A major in the U.S. Air Force Reserve, Hernandez focuses on military service members’ perceptions of stigma and barriers to care associated with seeking mental health services.

An increasing number of research projects have addressed the issue in recent years, he said, but the well-being of medical caregivers themselves has been overlooked. How reluctant are they to seek services when they are overwhelmed, he wondered.

In 2012, Hernandez launched a study that focused on health care providers at multiple Air Force bases. It found officer nursing personnel were significantly more likely than enlisted staff to believe accessing mental health services would be embarrassing, harm their career or cause leaders to blame them for the problem.

Other barriers to seeking care included taking time off from work for treatment and scheduling appointments.

A followup study is already in place. Ultimately, Hernandez says, the goal is to identify effective interventions and decrease stress for medical personnel.



Principal Investigator
Stephen Hernandez, PhD, RN
Assistant Professor,
College of Nursing

Grant Name
Stress, Resilience, and Stigma and
Barriers to Mental Health Care in
Air Force Nursing Staff

Grantor
TriService Nursing Research Program

UNM HEALTH SCIENCES TRAINING GRANTS

UNM HSC supports training in the biomedical sciences at all levels, engaging students and faculty through outreach initiatives and innovative programs to enhance biomedical excellence. We are pleased to recognize the outstanding students and researchers from our campus who have successfully obtained funding from a National Institutes of Health Research Training and Research Career Development program. These highly competitive national awards help to grow our education and research missions to produce the next generation of diverse and highly qualified biomedical scientists across the spectrum of human health.

**Mario Aragon, PhD Candidate**

T32 Recipient, NIH/NHLBI
Vasomotor and endothelial barrier impacts of nanoparticulate-induced serum compositional alterations
Mentor: Matthew Campen, PhD

**Seth Daly, PhD**

T32 Recipient, NIH/NIAID
Anti-virulence strategies targeting Methicillin-resistant Staphylococcus aureus
Mentor: Pamela Hall, PhD

**Nathan Bolanos, STEP-UP Summer Research Student**

K05 Scholar, NIH/NCI
UV risk in childhood and melanoma later in life
Mentor: Marianne Berwick, PhD, MPH

**Erica Dashner, PhD**

K12 Scholar, NIH
Examining a role for zinc supplementation as a way to attenuate the negative effects of exposure to arsenic and uranium
Mentor: Laurie Hudson, PhD

**Marianne Berwick, PhD, MPH**

K05 Scholar, NIH/NCI
Melanoma Prevention: Using the Sun

**Vanessa De La Rosa, PhD**

K12 Scholar, NIH
Toxicogenomics and genotoxicity studies to determine how arsenic and uranium exposures among New Mexico Native Americans may lead to increased incidence of cancer and other diseases
Mentor: Jim Liu, PhD

**Jonathan L. Brigman, PhD**

K22 Scholar, NIH
Understanding the maladaptive behavioral changes that occur in alcohol abuse, drug addiction and numerous neuropsychiatric disorders

**Dawn Delfin, PhD**

KL2 Scholar, CTSC
Stem cell adhesion to the extracellular matrix of remodeled, failing hearts
Mentors: Matthew Campen, PhD; Carlos Roldan, MD

**Alba A. Chavez-Dozal, PhD**

K12 Scholar, NIH/NIGMS
Investigating the molecular pathogenesis of Candida albicans, including the role of secretory proteins in virulence and biofilm formation
Mentor: Samuel Lee, MD, PhD

**Darrell Dinwiddie, PhD**

KL2 Scholar, CTSC
GWAS characterization of viral outbreaks in children: genetic biomarkers of rare diseases
Mentors: Randall Heidenreich, MD; Scott Ness, PhD

**Jayne M. Christen, PhD**

K12 Scholar, NIH/NIGMS
Identification of potential vaccine candidates for infectious diseases using a virus-like particle display technology
Mentor: Bryce Chackerian, PhD

**M. Frank Erasmus, PhD Candidate**

F31 Recipient, NIH
Targeting the pre-BCR in precursor B acute lymphoblastic leukemia
Mentors: Bridget Wilson, PhD; Tudor Oprea, MD, PhD



Jon Femling, MD, PhD
 KL2 Scholar, CTSC
Translating novel therapeutic pathways against Staphylococcus aureus pathogenesis into patients presenting to the emergency department
 Mentors: Cameron Crandall, MD; Patti Gravitt, PhD



Anastacia Griego, PhD Candidate
 F31 Recipient, NIH/NCI
Regulation of human papillomavirus replication via cell signaling pathways
 Mentor: Michelle A. Ozbun, PhD



Rubi Figueroa-Teran, PhD
 K12 Scholar, NIH/NIGMS
Enzymatic biofuel cells for production of energy for biomedical applications
 Mentor: Plamen Atanassov, PhD



Molly Harmon, PhD Candidate
 T32 Recipient, NIH
Studying the prevalence and underlying mechanisms of metals-induced oxidation of LDL cholesterol and testing the circulating inflammatory potential in a Navajo community disproportionately affected by uranium mining
 Mentor: Matthew Campen, PhD, MSPH



Brandi Fink, PhD
 KL2 Scholar, NIH/NCATS
Neuropsychophysiological mediators of the association between alcohol use and intimate partner violence
 Mentors: Fernando Valenzuela, MD, PhD; Michael Bogenschutz, MD



Jennifer Hetteema, PhD
 K23 Scholar, NIH
Mentored research on improving alcohol brief interventions in medical settings



Dallas Benjamin Flies, PhD
 T32 Recipient, NIH/NIAID
Identification of biomarkers and development of immunotherapeutics for ovarian cancer
 Mentor: Sarah R. Adams, MD



Joseph Hoover, PhD
 K12 Scholar, NIH/NIGMS
Using public health, resource management and geographic information science to identify contaminated water and land resources on the Navajo Nation
 Mentor: Johnnye Lewis, PhD



Natalie Fredette, PhD Candidate
 T32 Recipient, NIH
Role of G protein-coupled estrogen receptor in regulation of vascular endothelial and smooth muscle function
 Mentor: Eric Prossnitz, PhD



Stephanie Jerman, PhD
 F31 Recipient, NIH
OFD1 as constituent of a multimeric protein complex in odontoblast primary cilia
 Mentor: Angela Wandinger-Ness, PhD



Matt Graus, MS
 T32 Recipient, NIH/NIAID
Understanding how the fine-scale structures of the cell wall surface of Candida species fungal pathogens controls C-type lectin recruitment on innate immune cells, and how that affects the downstream immune response
 Mentor: Aaron K. Neumann, PhD



Jaime Javier Juarez, PhD
 K12 Scholar, NIH
Utilizing fabrication and optical interrogation techniques to improve flow cytometry particle detection at the nanoscale and at high speed
 Mentors: Andrew Shreve, PhD; Keith Lidke, PhD

UNM HEALTH SCIENCES TRAINING GRANTS

**Britta E. Lindquist, MD/PhD Candidate**

F31 Recipient, NIH/NINDS

Studying how adenosine accumulation following spreading depolarization in ischemia contributes to progression of stroke injury

Mentor: Bill Shuttleworth, PhD

**Levi Maston, MD/PhD Candidate**

F30 Recipient, NIH/NHLBI

Investigating inflammatory mechanisms of that underlie the progression of pulmonary hypertension resulting from long-term exposure to hypoxia.

Mentors: Laura Gonzalez Bosc, PhD; Thomas Resta, PhD; Judy Cannon, PhD

**Mary Beth Logue, Medical Student**

K05 Scholar, NIH/NCI

Skin cancer risk behavior among Native Americans in New Mexico

Mentor: Marianne Berwick, PhD, MPH

**Sowmiya Murali, Medical Student**

K05 Scholar, NIH/NCI

Risk factors for ulceration in melanoma

Mentor: Marianne Berwick, PhD, MPH

**Lindsey Long, PhD**

K12 Scholar, NIH

The role of histone modification in transcriptional regulation of yeast cell interconversion between quiescence and normal proliferative states and its relevance to stem cell behaviors and cancer

Mentor: Mary Ann Osley, PhD

**Prashant Nighot, DVM, PhD**

K01 Scholar, NIH

Inflammatory bowel disease

**Christy Magcalas, PhD Candidate**

T32 Recipient, NIH/NIAAA

How exposure to ethanol and ketamine during adolescence alters glutamatergic receptor function in the frontal cortex and related behavioral outcomes

Mentor: Derek Hamilton, PhD

**Sarah Pirio Richardson, MD**

KL2 Scholar, CTSC

Using non-invasive transcranial magnetic stimulation, to improve symptoms and quality of life in patients with movement disorders

Mentors: Bill Shuttleworth, PhD; Leslie Morrison, MD

**Kristopher D. Marjon, PhD**

T32 Recipient, NIH

Mechanisms of hematopoietic stem/progenitor cell homing and cell adhesion to specific microenvironments

Mentor: Jennifer Gillette, PhD

**Dominique Price, PhD Candidate**

T32 Recipient, NIH/NIAID

Infectious disease, immunology, vaccines and tuberculosis

Mentor: Pavan Muttli, PhD

**Kristin L. Marquardt, PhD Candidate**

T32 Recipient, NIH/NIAAA

Understanding how prenatal alcohol exposure alters prefrontal cortex and striatal function by using a mouse model of moderate prenatal alcohol exposure paired with in vivo electrophysiology.

Mentor: Jonathan Brigman, PhD

**Danielle Protas, PhD**

K12 Scholar, NIH

The mechanisms of depolarization in spreading depression

Mentor: Bill Shuttleworth, PhD

**Martha Martinez Grimes, PhD**

K12 Scholar, NIH

Elucidating the pathogenicity of Candida albicans and determining how vacuolar ATPase contributes to infection and virulence.

Mentor: Karlett Parra, PhD

**Anita L. Ray, PhD Candidate**

T32 Recipient

The role of inflammation in colorectal cancer and potential immunotherapeutic targets

Mentor: Ellen Beswick, PhD



Katelyn Reinhart, PhD Candidate
 T32 Recipient, NIH
Spreading depolarization and the basic physiological mechanisms that contribute to the progression of brain injuries, including stroke
 Mentor: Bill Shuttleworth, PhD



Lauren Topper, PhD Candidate
 T32 Recipient, NIH/NIAAA
Effects of developmental ethanol exposure on neuroinflammation
 Mentor: C. Fernando Valenzuela, MD, PhD



Chelsea Saito-Reis, PhD Candidate
 T32 Recipient, NIH
Role of CD2 in regulating hematopoietic stem cell adhesion and signaling
 Mentor: Jennifer Gillette, PhD



Christina R. Tyler, PhD
 F31 Recipient, NIH/NIMH
The epigenetic link between environmental exposure and adult-onset depression
 Mentor: Andrea M. Allan, PhD



Sabrina L. Samudio-Ruiz, PhD
 K01 Scholar, NIH
Alterations in gene expression, intracellular signaling pathways and DNA methylation associated with the development of platinum resistance in ovarian cancer



Heather Ward, PhD
 K01 Scholar, NIH
Targeting fibrosis in polycystic kidney disease
 Mentor: Angela Wandinger-Ness, PhD



Montaser Shaheen, MD
 K01 Scholar, NIH/NHLBI
The role of hPso4 in DNA repair and chemotherapy resistance
 Mentor: Alan Tomkinson, PhD



Sonlee West, MD
 KL2 Scholar, CTSC
Immune response to trauma
 Mentors: Arup Das, MD, PhD; Carolyn Mold, PhD



Joshua Sheak, MD/PhD Candidate
 T32 Recipient, NIH
Investigating the contribution of a novel intracellular signaling pathway to pulmonary hypertension in infants using an animal model of neonatal pulmonary hypertension
 Mentor: Thomas Resta, PhD



Kirsten White, PhD Candidate
 K05 Scholar, NIH/NCI
Autophagy and oncogene status in melanoma
 Mentors: Marianne Berwick, PhD, MPH; Chien-An Hu, PhD



Laurie Steffen, PhD Candidate on Internship
 K05 Scholar, NIH/NCI
Late-stage lung cancer and coping
 Mentor: Bruce Smith, PhD



Claire Wilcox, MD
 K23 Scholar, NIH
Neural mechanisms of change during the treatment of alcohol use disorders
 Mentor: Michael Bogenschutz, MD



Christina Termini, PhD Candidate
 F31 Recipient, NIH
Identify the mechanisms and molecules that regulate hematopoietic stem/progenitor cell (HSPC) adhesion to the microenvironment to provide clinical targets to enhance HSPC transplantation therapies
 Mentors: Jennifer Gillette, PhD; Angela Wandinger-Ness, PhD

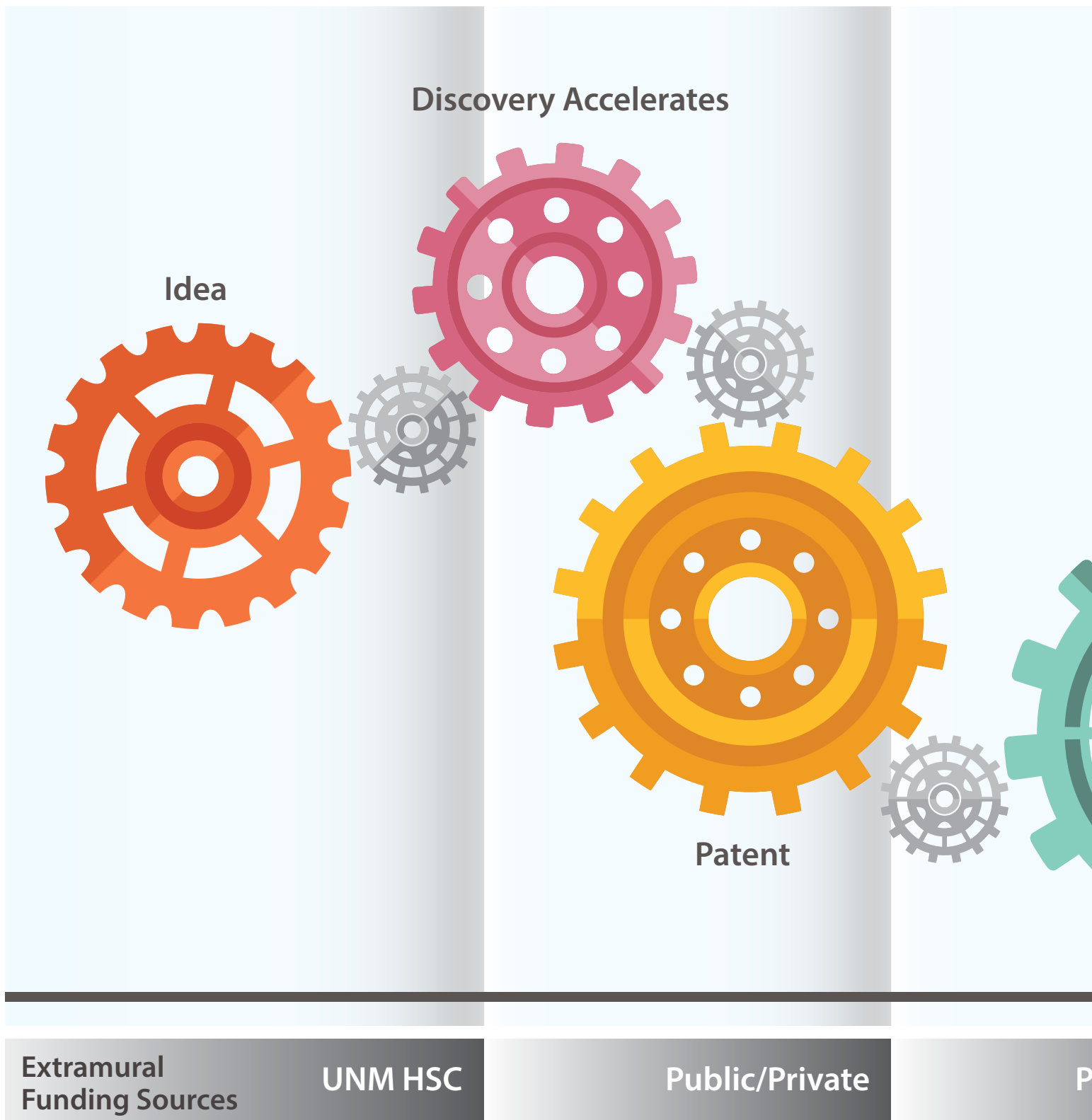


Kayla R. Zehr, PhD Candidate
 T32 Recipient, NIH/NHLBI
How omega-3 polyunsaturated fatty acids mediate dilatory and antioxidant effects in the vasculature and protect blood vessels from xenobiotic-induced oxidative stress and dysfunction.
 Mentor: Mary Walker, PhD

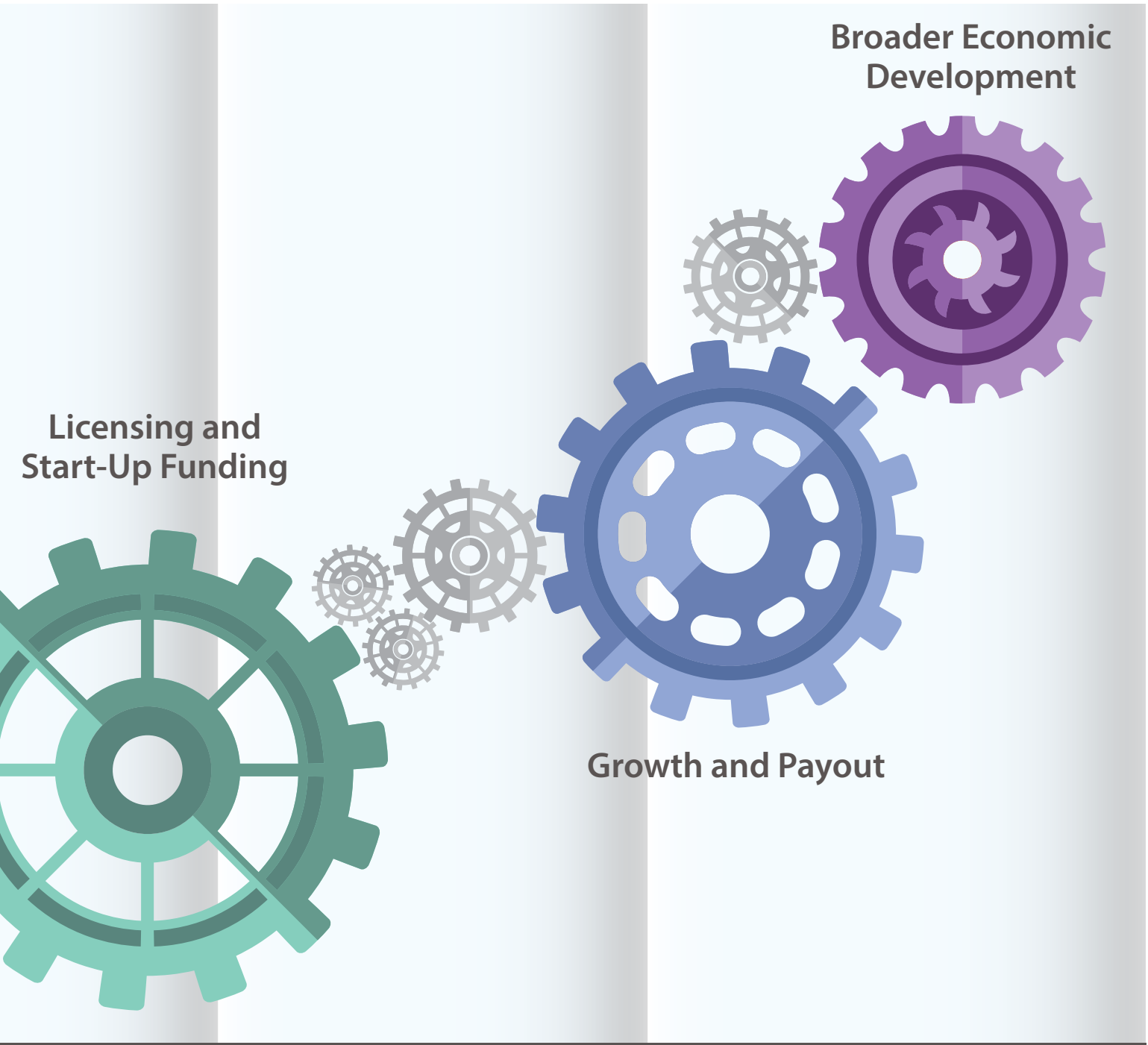
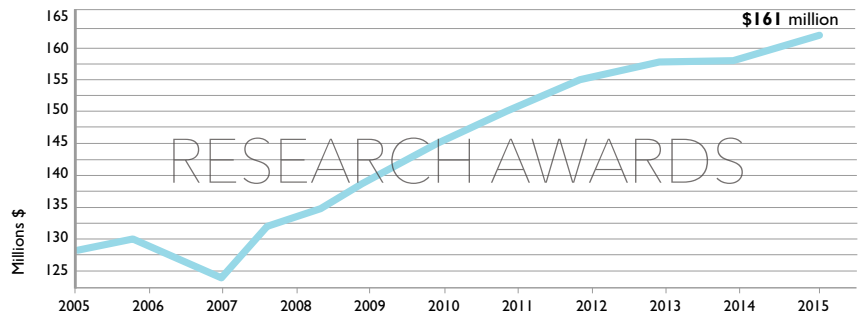
Unavailable for photos: Christopher Hughes; Jenna Lilyquist, PhD; John Pinner

Giving Life to Innovation

HOW PUBLIC-PRIVATE PARTNERSHIPS PROMOTE BIOTECHNOLOGY



tion



Public/Private

Private

Revenue

2015 EXCELLENCE IN RESEARCH AWARDS



Left to right: Vojo Deretic, PhD; Ludmila Bakhireva, PhD, MD, MPH; Richard Larson, MD, PhD; Mark Burge, MD; Corey Ford, MD, PhD; Andrea Allan, PhD; Jennifer Gillette, PhD; Paul B. Roth, MD, MS.

Award recipients were recognized for their excellence in research in five categories:

BASIC SCIENCE

CLINICAL SCIENCE

JUNIOR FACULTY

POPULATION SCIENCE

TEAM SCIENCE





The Seventh Annual Research Day Awards Ceremony was held on October 29, 2015. For the Excellence in Research Awards, five colleagues were nominated by their peers and selected by a faculty committee for outstanding contributions in the categories of Basic Science, Clinical Science, Junior Faculty and Population Science. This year, a collaboration-focused award - Team Science - was added.



Mark Burge, MD
Clinical Science

Born into a family affected by diabetes (and contracting it himself in college), Mark Burge always knew he would one day study the disease. His research has focused on improving treatments for Type 1 and 2 diabetes since he joined the faculty in 1993. "Everything I've learned about research and scholarly achievement comes from a small community of phenomenally accomplished academic clinical researchers at UNM," he says.



Vojo Deretic, PhD
Basic Science

Vojo Deretic pioneered the understanding of autophagy. "Cells actually have a process to cleanse their interiors that we did not know existed just a decade ago," he says. His discoveries may lead to treatments for Crohn's disease, HIV and tuberculosis, among others.

"I am particularly proud of this award," he says. "I'm thankful to our institution and environment here for allowing me to pursue my scientific endeavors to the fullest."



Ludmila Bakhireva, PhD, MD, MPH
Population Science

Ludmila Bakhireva works to minimize health disparities among vulnerable populations. She has identified biomarkers of prenatal alcohol exposure and is studying the combined effects of alcohol, arsenic and uranium exposure on Navajo children. "These patients genuinely want to contribute to research," she says. "They see it as an opportunity for change, to have their stories heard, to help their child and to make a contribution to their community."



Andrea Allan, PhD
Team Science

"Team-oriented science is fast becoming the norm," says Andrea Allan. "With each of us bringing to a project our expertise, knowledge and curiosity, we broaden our perspective and strengthen our findings." Allan has played a key role in more than a dozen

programmatic initiatives and signature programs in the past decade. Echoing Sir Isaac Newton, she says, "One can see deeper by standing on the shoulders of giants."



Jennifer Gillette, PhD
Junior Faculty

Jennifer Gillette has focused on bone marrow engraftment and homing of stem cells mediated by CD82 in the short time since she joined UNM in 2010. She is developing translational approaches to expand her research program by partnering with and mentoring clinician scientists. "I attribute much of my success to the talent, hard work and dedication of the trainees with whom I've been privileged to work," she says.

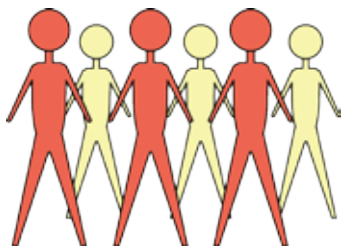
BY THE NUMBERS

UNM HSC RESEARCH 2015



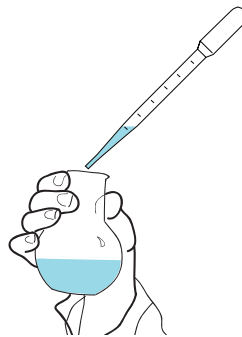
\$160,753,570

Total awards in FY 2015



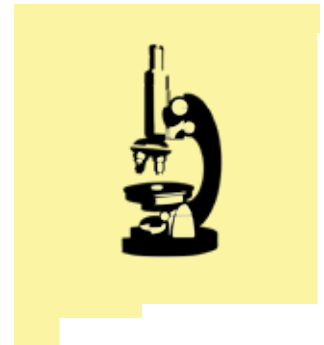
1,178

Total full-time faculty



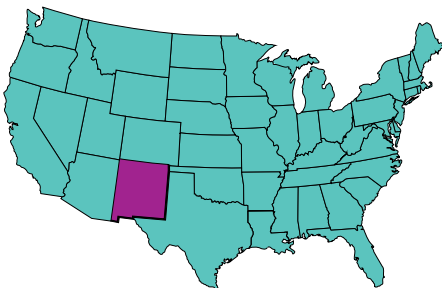
306

Principal investigators extramurally funded



85

Community research sites in New Mexico



1 of 29

National institutions with both a Clinical and Translational Science Award and a Cancer Center with NCI Comprehensive Designation



38

Business startups over 10 years



849

Proposals awarded

UNM HEALTH SCIENCES CENTER CONTRACTS AND GRANTS FY 2015

Chancellor for Health Sciences	36
Financial Aid	36
Health Sciences Library and Informatics Center	36
Office of Research	36
Animal Resource Facility	36
Biomedical Research Educational Program	36
Clinical & Translational Science Center	36
College of Nursing	36
College of Pharmacy	37
Poison Control	39
School of Medicine	39
Anesthesiology	39
Biochemistry and Molecular Biology	39
Brain and Behavioral Health Institute	39
Cancer Research and Treatment Center	40
Cell Biology and Physiology	42
Center for Infectious Disease and Immunity	42
Continuing Medical Education	42
Dental Medicine	43
Dermatology	43
ECHO Institute	43
Emergency Medicine	43
Family and Community Medicine	45
Internal Medicine	46
Molecular Genetics and Microbiology	49
Neurology	49
Neurosciences	50
Neurosurgery	51
New Mexico Tumor Registry	51
Obstetrics and Gynecology	51
Office of the Medical Investigator	52
Orthopaedics	52
Pathology	52
Pediatrics	54
Pediatrics Center for Development and Disability	56
Pediatrics Prevention and Population Sciences	57
Psychiatry and Behavioral Sciences	58
Radiology	59
Surgery	59
Undergraduate Medical Education	60
UNM Hospital	60
UNM Medical Group	60
UNM Sandoval Regional Medical Center	60

FY 2015 (JULY 1, 2014 - JUNE 30, 2015)

CHANCELLOR FOR HEALTH SCIENCES

RICHARD LARSON

UNM Foundation \$477,944
Private Gifts for Research

UNM Foundation \$351,435
Private Gifts for Research

UNM Foundation \$317,472
Private Gifts for Research

UNM Foundation \$245,542
Private Gifts for Research

Financial Aid

MARY FENTON

HHS/Health Resources and Services Administration \$650,000
ACA-Scholarship for Disadvantaged Students - Allopathic Medicine

HHS/Health Resources and Services Administration \$206,496
ACA-Scholarship for Disadvantaged Students - Medical Laboratory Science

HEALTH SCIENCES LIBRARY AND INFORMATICS CENTER

ANDRAS AMBRUS

NIH/National Library of Medicine \$700
Professional Development Award - Bioinformatics Classes

PATRICIA BRADLEY

Center for Public Service Communications \$20,000
Native Voices Community Outreach

NIH/National Library of Medicine \$15,000
Maintaining the Health Information Network for New Mexico (Outreach)

GALE HANNIGAN

National Network of Libraries of Medicine \$8,000
Ps (Partners) for PODS: Engaging School Libraries in Points of Dispensing Disaster Preparedness Activities

PHILIP KROTH

HHS/Agency for Healthcare Research and Quality \$193,326
Minimizing Stress, Maximizing Success of Physician's Use of Health Information and Communications Technologies

OFFICE OF RESEARCH

RICHARD LARSON

Lovelace Respiratory Research Institute \$48,957
BSGP Administrative Support Agreement

Lovelace Respiratory Research Institute \$9,474
BSGP Administrative Support for Fellowships

PAUL ROTH AND RICHARD LARSON

Association of American Medical Colleges \$107,100
Developing a Workforce to Improve Health and Reduce Disparities

Animal Resource Facility

RICHARD LARSON

New Mexico VA Health Care System \$26,050
Veterinary Services

Biomedical Research Educational Program

RICHARD LARSON

Lovelace Respiratory Research Institute \$72,727
BSGP Fellowship Agreement

Lovelace Respiratory Research Institute \$38,355
BSGP Fellowship Support

CLINICAL & TRANSLATIONAL SCIENCE CENTER

MARK BURGE

National Institutes of Health \$10,514
Iron-Induced Oxidative Stress and Mitochondrial Dysfunction: Effects on Insulin Secretion and Insulin Sensitivity

DAWN DELFIN

American Heart Association \$140,000
Stem Cell Adherence to the ECM of Remodeled Heart

JON KENNETH FEMLING

Emergency Medicine Foundation \$50,000
Translating Quorum Sensing Inhibitions to Human *S. Aureus* Infections

ALBERTA KONG

NIH/National Heart, Lung, and Blood Institute \$715,619
ACTION PAC: Adolescents Committed to Improvement of Nutrition & Physical Activity

RICHARD LARSON

NIH/National Center for Advancing Translational Sciences \$4,941,544
UNM Clinical & Translational Science Center*

NIH/National Institute of General Medical Science \$774,307
Clinical and Translational Research Infrastructure Network IDeA-CTR/CRDEB

National Institutes of Health \$129,960
UNM Clinical & Translational Science Center - Supplement

NIH/National Center for Advancing Translational Sciences \$111,529
Enhancing Clinical Research Professionals' Training and Qualifications

SONLEE DENISE WEST

Bio2 Medical \$152,714
Clinical Trial Agreement (Device)

ROBERT WILLIAMS

National Institutes of Health \$300,241
ACA-NM CARES HD - Pilot Research Projects

COLLEGE OF NURSING

BLAKE BOURSAW

New Mexico Higher Education Department \$13,836
Performance-Based Funding Metrics for Higher Education:
The Case of New Mexico in FY 17



Ellen Hatch

* initiated in FY14 and continued in FY15 and part of FY16

SALLY COHEN

American Academy of Nursing\$90,000
 IOM-AAN, ANA, ANF Distinguished Nurse Scholar in Residence

EMILY HAOZOUS

Feinstein Kean Healthcare\$14,500
 Study of Trinity Radiation Doses and Cancer Risks Resulting from
 1945 "Trinity" Atomic Weapon Test

Social & Scientific Systems\$10,610
 Study of Trinity Radiation Doses and Cancer Risks

Feinstein Kean Healthcare\$6,000
 Study of Trinity Radiation Doses and Cancer Risks

Spirit of EAGLES\$2,500
 Hampton Faculty Fellows Program Cohort II

STEPHEN HERNANDEZ

Uniformed Services University of the Health Sciences\$99,384
 Stress, Resilience, Stigma & Barriers to Mental Health Care Among Air Force
 Nursing Personnel

SHANA (SUZANNE) MARIE JUDGE

Robert Wood Johnson Foundation\$1,278,913
 Nursing and Health Policy Collaborative at UNM

AMY JO LEVI

HHS/Health Resources and Services Administration \$350,000
 ACA-Advanced Education Nursing Traineeships

HHS/Health Resources and Services Administration \$350,000
 ACA-Advanced Education Nursing Traineeships

HRSA/Bureau of Primary Health Care\$52,261
 ACA-Nurse Faculty Loan Program (NFLP) FY 16

University of California, San Francisco\$12,272
 Early Pregnancy Loss

JUDY LIESVELD

Robert Wood Johnson Foundation \$300,000
 Academic Progression in Nursing

New Mexico Board of Nursing \$158,771
 New Mexico Nursing Education Statewide Planning

NANCY MORTON

New Mexico VA Health Care System \$436,561
 VA Nursing Academic Partnerships IPA: Marisa Francis (Years 2-4)

New Mexico VA Health Care System \$399,406
 VA Nursing Academic Partnerships IPA: Kimberly Madden

BARBARA ANN OVERMAN

El Pueblo Health Services\$5,784
 El Pueblo Health Services

NANCY RIDENOUR

City of Albuquerque \$133,000
 Health Services Coordination

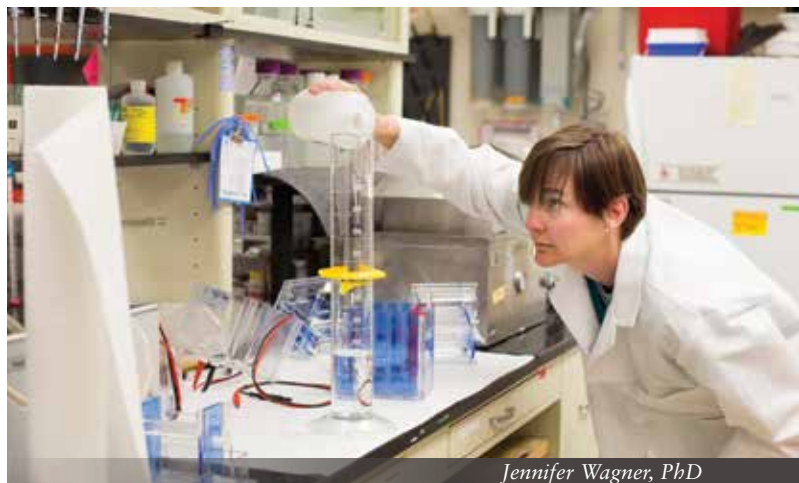
City of Albuquerque\$67,000
 Geriatric Education and Health Maintenance Clinic

STEPHEN VAN ROPER

ACE Leadership High School\$58,319
 The Board of Architecture, Construction, and Engineering
 Leadership High School

ABQ Health Partners LLC\$54,870
 ABQ Health Partners Contract - BAA

First Nations Community Healthsource, Inc.\$52,171
 First Nations Community Healthsource, Inc. Service Agreement



Jennifer Wagner, PhD

Presbyterian Healthcare Services\$29,291
 Certified Nurse Practitioner Services

COLLEGE OF PHARMACY**JOE ANDERSON**

New Mexico Department of Health\$30,004
 Health Systems Data Management and Use of Team-Based Health Care

LUDMILA BAKHIREVA

NIH/National Institute on Alcohol Abuse and Alcoholism \$569,811
 Early Indices of Atypical Neurodevelopment with Fetal Alcohol Exposure

University of California, San Diego\$48,000
 Organization of Teratology Information Specialists Research Network

Texas Department of Health\$24,000
 Texas Office of Prevention of Development Disabilities

SCOTT BURCHIEL

NIH/National Institute of Environmental Health Sciences \$729,080
 Synergistic Immunosuppression by PAHs and Arsenite

MATTHEW CAMPEN

NIH/National Institute of Environmental Health Sciences \$362,313
 Enhancement of Coronary Constriction by Volatile Organic Air Toxics

National Institutes of Health\$75,500
 Chronic Particulate Matter Exposure, Inflammation and Atherogenesis in
 At-Risk Children

University of Washington\$39,405
 Cardiovascular Consequences of Immune Modification by Traffic-
 Related Emissions

University of Washington\$39,405
 Cardiovascular Consequences of Immune Modification by Traffic-Related Emissions

CATHERINE CONE

Sandia Staffing Alliance\$26,641
 Sandia National Laboratories Clinic - BAA

ESZTER ERDEI

Black Hills Center for American Indian Health \$111,167
 Complex Metal Exposure and Immune Status on the Cheyenne River

LARRY GEORGOPOULOS

New Mexico Heart Institute \$250,000
 Radiopharmaceutical Goods and Services

UNM Medical Group \$100,000
 Molina Telephonic MTM Agreement



Genevieve Phillips

LARRY GEORGOPOULOS (CONTINUED)

ABQ Health Partners LLC.....	\$90,000
<i>ABQ Health Partners - Radiopharmaceutical Products</i>	
Cardiac Care Consultants of New Mexico.....	\$90,000
<i>Professional Services Agreement - Cardiac Care Consultants</i>	
First Choice Community Healthcare.....	\$81,060
<i>Pharmacist Consultant Agreement - BAA</i>	
Translational Radiopharmacy.....	\$60,000
<i>Preparation of 90Y-SirSpheres</i>	
New Mexico Health Connections.....	\$18,000
<i>New Mexico Health Connections Contract Review and Consultation</i>	
First Nations Community Healthsource, Inc.....	\$2,500
<i>First Nations Community Healthsource</i>	

PAMELA HALL

NIH/National Institute of Allergy and Infectious Diseases.....	\$397,470
<i>Apolipoprotein B and Control of S. Aureus Quorum Sensing</i>	
NIH/National Institute of Allergy and Infectious Diseases.....	\$226,500
<i>VLP-Based Vaccines for Targeting Staphylococcus aureus-Secreted Virulence Factors</i>	
Sandia National Laboratories.....	\$45,300
<i>Optimization of Mesoporous Silica Nanoparticle-Supported Lipid Bilayers ('Protocells') for In Vivo Delivery of Antibiotic Compounds</i>	

AJNA HAMIDOVIC

NIH/National Institutes of Health.....	\$75,500
<i>Intranasal Insulin Treatment for Weight Management During Smoking Cessation</i>	

LAURIE HUDSON

NIH/National Institutes of Health.....	\$386,049
<i>Arsenic Co-Carcinogenesis with UVR: Nitrosation and Oxidation of Target Proteins</i>	
NIH/National Institutes of Health.....	\$313,325
<i>Zinc Chemoprevention of Arsenic Co-Carcinogenesis</i>	

JOHNNYE LEWIS

HHS/Centers for Disease Control and Prevention.....	\$1,000,000
<i>ACA-A Prospective Birth Cohort Study Involving Uranium Exposure in the Navajo Nation</i>	
HHS/Centers for Disease Control and Prevention.....	\$360,000
<i>Navajo Birth Cohort Study (Mother/Infant Supplement)</i>	
National Institutes of Health.....	\$156,241
<i>Wood Stove Interventions and Child Respiratory Infections in Rural Communities</i>	

JIM LIU

NIH/National Institute of Environmental Health Sciences.....	\$339,750
<i>Arsenic Co-Carcinogenesis with UVR: Nitrosation and Oxidation of Target Proteins</i>	
NIH/National Institute on Drug Abuse.....	\$187,425
<i>Methamphetamine-Induced Alterations in Brain Tissue Oxygenation</i>	
National Institutes of Health.....	\$52,370
<i>Particulate Cr(VI) Toxicology in Human Lung Epithelial Cells and Fibroblasts</i>	
Massachusetts General Hospital.....	\$10,000
<i>General Anesthesia and Alzheimer's Disease Neuropathogenesis</i>	
National Institutes of Health.....	\$9,062
<i>Particulate Cr(VI) Toxicology in Human Lung Epithelial Cells and Fibroblasts</i>	

RENEE-CLAUDE MERCIER

TriCore Reference Laboratories.....	\$54,094
<i>Pharmacy Residency Affiliation Agreement</i>	
International Health Management Associates, Inc.....	\$2,650
<i>Evaluation of Ceftazidime Avibactam</i>	

PAVAN MUTTIL

Sandia National Laboratories.....	\$100,000
<i>NATV DTRA</i>	

JEFFREY NOREBERG

inviCRO.....	\$61,856
<i>Task 31: PK/Biodistribution Study</i>	
inviCRO.....	\$29,000
<i>Task 32: Plasma Pharmacokinetic Testing Study</i>	

DENNIS RAISCH

National Institutes of Health.....	\$30,000
<i>Southern Oncology Network on Adverse Reactions (SONAR)</i>	

SABRINA SAMUDIO-RUIZ

NIH/National Cancer Institute.....	\$129,216
<i>EGF Receptor, DNA Methylation and Platinum Resistance in Ovarian Cancer</i>	

SUSAN SMOLINSKE

Denver Health and Hospital Authority.....	\$18,623
<i>RADARS System Work Order #1</i>	
Denver Health and Hospital Authority.....	\$1,562
<i>RADARS System Work Order #2</i>	
Denver Health and Hospital Authority.....	\$1,562
<i>RADARS System Work Order #3</i>	

GRAHAM TIMMINS

NIH/National Institute of Allergy and Infectious Diseases.....	\$188,750
<i>Pyrazinamide Breath Test for TB</i>	
Johnson & Johnson.....	\$6,938
<i>An Initial Analysis of MPF Methodology for Sunscreen Assessment</i>	

MARY WALKER

American Heart Association.....	\$140,000
<i>Cytochrome P4501A1 and Endothelial Dysfunction</i>	

CARLA WALRAVEN

Durata Therapeutics, Inc.....	\$7,500
<i>Acute Bacterial Skin and Skin Practice Pattern Assessment Project - Site 102</i>	
Durata Therapeutics, Inc.....	\$7,500
<i>Acute Bacterial Skin and Skin Practice Pattern Assessment Project - Site 102</i>	

TRACI WHITE

Mesilla Valley Hospice\$35,152
Mesilla Valley Hospice Pharmacists Clinician Agreement

KRISTINA WITTSTROM

Sandia National Laboratories\$2,100
SNL Isotope Request - PRN Services

Poison Control**SUSAN SMOLINSKE**

HHS/Health Resources and Services Administration \$115,158
Poison Control Stabilization And Enhancement Program

SCHOOL OF MEDICINE**DAVID PITCHER**

New Mexico Department of Health\$1,125,355
Sustain Level I Trauma Center Designation & Improve Financial Viability of Trauma Services

New Mexico Department of Health\$1,125,355
Sustain Level I Trauma Center Designation & Improve Financial Viability of Trauma Services

MICHAEL RICHARDS

New Mexico Department of Health \$140,450
Locum Tenens Services for Turquoise Lodge Hospital

New Mexico Department of Health\$50,000
Locum Tenens Services for Turquoise Lodge Hospital

New Mexico Department of Health\$50,000
Psychiatric Services for New Mexico Behavioral Health Institute Patients

Anesthesiology**EUGENE KOSHKIN**

Boston Scientific Corporation\$15,000
UNM Pain Medicine Fellowship

Medtronic\$15,000
UNM Pain Medicine Fellowship

St. Jude Medical.....\$15,000
UNM Pain Medicine Fellowship

JONATHAN MARINARO

Kindred Hospital (Transitional Hospitals Corp. of NM).....\$64,800
Medical Director

ISAAC TAWIL

DCI Donor Services.....\$8,240
Medical Director Services

Biochemistry and Molecular Biology**NATALIE ADOLPHI**

Sandia National Laboratories \$170,000
Biodistribution of Mesoporous Silica Nanoparticle-Supported Lipid Bilayer Platform

JEFFREY GRIFFITH

National Institutes of Health \$686,030
New Mexico IDeA Networks of Biomedical Research Excellence

National Institutes of Health\$62,697
New Mexico IDeA Networks of Biomedical Research Excellence

CHIEN-AN ANDY HU

Children's National Medical Center.....\$10,117
Role of Cytokines and APOL-1 in the Pathogenesis of Childhood HIV Associated Nephropathy

MEILIAN LIU

American Heart Association \$140,000
mTORC1 and Autophagy in Human Brown Adipocytes

American Diabetes Association, Inc..... \$124,200
The Role of DsbA-L in Regulating Liver Mitochondria Function and Insulin Sensitivity

KRISTINA TRUJILLO

NIH/National Cancer Institute..... \$345,413
Is Tumor-Adjacent Histologically Normal Tissue Primed for Tumorigenesis Through the TGF(beta) Pathway?

ExoVita BioSciences\$24,443
Development of Exosomes from Field-Cancerized Fibroblasts as a Cancer Therapeutic

Brain and Behavioral Health Institute**CLAUDE SHUTTLEWORTH**

Patient-Centered Outcomes Research Institute \$123,965
ACA-Pathways to Partnership: Communication and Collaboration Skills for Creating PCORI Teams

ROBERT THOMA

New Mexico Governor's Commission on Disability.....\$50,000
Brain Injury Study on the Veteran Population of New Mexico

JOHN WEAVER

Eastern New Mexico University\$8,500
Vascular Mechanisms of Oxidative Stress and Insulin Regulation in Metabolic Syndrome

YIRONG YANG

Lovelace Respiratory Research Institute\$3,600
Exploration of Potential Neuroprotective Effects of Ketamine in Rodents Exposed to Organophosphates

YIRONG YANG

Lovelace Respiratory Research Institute\$1,500
Exploration of Potential Neuroprotective Effects of Ketamine in Rodents Exposed to Organophosphates



Andre Moezzi

Cancer Research and Treatment Center

SARAH ADAMS

Ovarian Cancer Research Fund, Inc. \$200,000
A Combination Therapy for Hereditary Ovarian Cancer

Oxnard Foundation. \$80,000
Targeting DNA Repair Pathways to Sensitize Ovarian Tumors to Immune Therapy

Phi Beta Psi Charity Trust \$54,130
IL 10 Blockade to Restrict Intraperitoneal Ovarian Cancer Metastasis

CECILIA ARANA YI

New Mexico Cancer Care Alliance \$100,956
Clinical Trial Agreement - Phase 3

New Mexico Cancer Care Alliance \$100,557
Clinical Trial Agreement - Phase 2

New Mexico Cancer Care Alliance \$86,445
Clinical Trial Agreement - Phase 1

New Mexico Cancer Care Alliance \$85,244
Clinical Trial Subaward - Phase 2

New Mexico Cancer Care Alliance \$85,103
Clinical Trial Agreements - Phase 3

New Mexico Cancer Care Alliance \$54,240
Clinical Trial Agreements - Phase 3 (2099)

WADIH ARAP

NIH/National Heart, Lung and Blood Institute. \$366,250
Regulation of the Paracrine Angiogenic Function of Cardiac Myocytes by Cardiomycocyte PDGFR- α

MARIANNE BERWICK

Memorial Sloan Kettering Cancer Center \$244,632
Personalized Genomic Testing for Melanoma: Maximizing Personal Utility and Research

NIH/National Cancer Institute. \$156,292
Melanoma Prevention: Using the Sun

URSA BROWN-GLABERMAN

New Mexico Cancer Care Alliance \$135,446
Clinical Trial Subaward - Phase 3

New Mexico Cancer Care Alliance \$133,889
Clinical Trial - Phase 3

New Mexico Cancer Care Alliance \$96,000
Clinical Trial Subaward - Phase 2

New Mexico Cancer Care Alliance \$95,727
Clinical Trial Agreement - Phase 2

LINDA SUE COOK

NIH/National Cancer Institute. \$505,309
Mitochondrial DNA and Ovarian Cancer Risk and Survival

BARBARA DAMRON

Consulate of Mexico in Albuquerque. \$36,000
Ventanilla de Salud Program

New Mexico Department of Health \$5,800
Master Services Agreement for Native American Cancer Education Project 2014

STEVEN EBERHARDT

ECOG-ACRIN Cancer Research Group \$76,800
ECOG ACRIN (Non-Federal)

ECOG-ACRIN Cancer Research Group \$75,300
ECOG ACRIN (Federal)

GREGORY GAN

Radiological Society of North America \$152,000
Mechanisms of Hedgehog Pathway-Mediated Head and Neck Cancer Radio-Resistance

New Mexico Cancer Care Alliance \$78,447
Clinical Trial Agreement - Phase 2

New Mexico Cancer Care Alliance \$74,609
Clinical Trial Subaward - Phase 1

DEIRDRE HILL

NIH/National Cancer Institute. \$75,500
Biomarkers of Tumor Initiation in Breast Cancer

Group Health Research Institute \$35,607
Risk-Based Breast Cancer Screening in Community Settings

RICHARD HOFFMAN

National Institutes of Health \$10,721
Treatment Decisions and Patient-Reported Outcomes in Low-Risk Prostate Cancer

HUINING KANG

Gabrielle's Angel Foundation \$10,000
Statistical Methods for Evaluating Cancer Biomarkers

ANITA KINNEY

National Institutes of Health \$10,076
Health and Socioeconomic Outcomes for Survivors of Adolescent and Young Adult Cancer

Nancy Floyd Haworth Foundation \$4,200
Culturally Sensitive Hereditary Breast Cancer Genomic Risk Communication for Hispanic Women

RICHARD LAUER

New Mexico Cancer Care Alliance \$96,260
Clinical Trial Subaward - Phase 2

New Mexico Cancer Care Alliance \$93,391
Clinical Trial Agreement - Phase 2

FA-CHYI LEE

New Mexico Cancer Care Alliance \$44,201
Clinical Trial Agreement - Phase 3

YU-SHEN LIN

Sandia National Laboratories \$30,000
Synthesis of Mono-Sized Silica Nanoparticles

CAROLYN MULLER

NRG Oncology \$312,773
NRG (NSABP, RTOG, GOG) (Non-Federal Part)



Rachel Grattan

NRG Oncology	\$287,773
<i>NRG (NSABP, RTOG, GOG) (Federal Part)</i>	
Gynecologic Oncology Group	\$52,114
<i>Clinical Trial Subaward - Phase 2</i>	

LAURA NERVI

Consulate of Mexico in Albuquerque.....	\$36,000
<i>Ventanilla de Salud Program</i>	
Consulate of Mexico in Albuquerque.....	\$4,000
<i>Ventanilla de Salud Program</i>	

SCOTT NESS

NIH/National Cancer Institute.....	\$584,002
<i>Alternative RNA Splicing and Protein Products in Leukemia Outcome (PQ11)</i>	
NIH/National Institute of Dental and Craniofacial Research	\$442,617
<i>Mutation and Target Genes in Adenoid Cystic Carcinoma</i>	
NIH/National Institute of Dental and Craniofacial Research	\$163,350
<i>Mutations and Target Genes in Adenoid Cystic Carcinoma (Administrative Supplement)</i>	
NIH/National Institute of Dental and Craniofacial Research	\$55,342
<i>Mutations and Target Genes in Adenoid Cystic Carcinoma (Administrative Supplement)</i>	

JANET OLIVER

NIH/National Cancer Institute.....	\$351,785
<i>Integrative Cancer Nanoscience and Microsystems Training Center</i>	

MICHELLE OZBUN

American Cancer Society	\$300,000
<i>Institutional Research Grant</i>	

RENATA PASQUALINI

Arrowhead Research Corporation.....	\$160,000
<i>Skeletal Muscle-Targeting Peptides</i>	
NIH/National Eye Institute	\$65,318
<i>Targeted Modulation of Angiogenesis by VEGFR Peptidomimetic Antagonists</i>	
National Institutes of Health	\$56,475
<i>Optical Systems for In-Vivo Molecular Imaging of Cancer</i>	
American Association for Cancer Research	\$24,380
<i>Octreotide-Targeted Treatment of Neuroendocrine Tumors of the Pancreas</i>	

ERIC PROSSNITZ

NIH/National Institute of General Medical Sciences.....	\$631,245
<i>New Mexico IDeA Networks of Biomedical Research Excellence</i>	
NIH/National Institute of General Medical Sciences.....	\$52,850
<i>New Mexico IDeA Networks of Biomedical Research Excellence</i>	

OLIVIER RIXE

Brigham and Women's Hospital.....	\$80,400
<i>Brigham and Women's (Alliance for Clinical Trials in Oncology) - Federal</i>	
Brigham and Women's Hospital.....	\$64,000
<i>Brigham and Women's (Alliance for Clinical Trials in Oncology) - Non-Federal</i>	

MELANIE ROYCE

NIH/National Cancer Institute.....	\$1,383,575
<i>Minority-Based Community Clinical Oncology Program</i>	
New Mexico Cancer Care Alliance.....	\$110,555
<i>Clinical Trial Subaward - Phase 2</i>	
New Mexico Cancer Care Alliance.....	\$103,240
<i>Clinical Trial Agreement - Phase 2</i>	



Colleen Fordyce, PhD

New Mexico Cancer Care Alliance.....	\$95,868
<i>Clinical Trial Agreement - Phase 2</i>	
New Mexico Cancer Care Alliance.....	\$84,364
<i>Clinical Trial Agreement - Phase 2</i>	
New Mexico Cancer Care Alliance.....	\$82,055
<i>Clinical Trial - Phase 2</i>	
New Mexico Cancer Care Alliance.....	\$80,374
<i>Clinical Trial Subaward - Phase 2</i>	

MONTASER SHAHEEN

New Mexico Cancer Care Alliance.....	\$97,579
<i>Clinical Trial Subaward - Phase 1/2</i>	
New Mexico Cancer Care Alliance.....	\$15,000
<i>Clinical Trial Agreement</i>	

LARRY SKLAR

NIH/National Cancer Institute.....	\$230,094
<i>Novel DNA Double Strand Break Repair Targeting Therapeutics for Cancer Treatment</i>	

ALAN TOMKINSON

NIH/National Institute of General Medical Sciences.....	\$280,000
<i>Roles of DNA Ligase 1 in Mammalian DNA Metabolism</i>	
NIH/National Institute of General Medical Sciences.....	\$238,580
<i>Cellular Functions of Eukaryotic DNA Ligases</i>	
Lawrence Berkeley National Laboratory.....	\$86,807
<i>Structural Cell Biology of DNA Repair Machines Project</i>	
NIH/National Institute on Aging	\$29,000
<i>Fifth US-EU Conference on Repair of Endogenous DNA Damage</i>	

CHERYL WILLMAN

NIH/National Cancer Institute.....	\$1,876,081
<i>UNM Cancer Center Support Grant</i>	
Memorial Medical Center.....	\$1,356,618
<i>Professional Services</i>	
NIH/National Cancer Institute.....	\$575,377
<i>Molecular Signatures for Outcome Prediction & Therapeutic Targeting in ALL</i>	
NIH/National Cancer Institute.....	\$559,590
<i>Molecular Signatures for Outcome Prediction & Therapeutic Targeting in ALL</i>	
NIH/National Cancer Institute.....	\$322,235
<i>Peptide-Directed Protocells and Virus-like Particles: New Nanoparticle Platforms for Targeted Cellular Delivery of Multicomponent Cargos</i>	
New York University.....	\$211,307
<i>Targeted Nanotherapeutics for Acute Lymphoblastic Leukemia Therapy</i>	



Gabriela Perales

CHERYL WILLMAN (CONTINUED)

NIH/National Cancer Institute.....	\$125,000
<i>UNM Cancer Center Support - Community Outreach Capacity Through Community Health Education of National Outreach Network (Supplement #3)</i>	
NIH/National Cancer Institute.....	\$113,250
<i>Cancer Center Support Grant - CURE High School and Undergraduate Student Research Experiences (Supplement #2)</i>	
Children's Hospital of Philadelphia.....	\$99,196
<i>Testing Targeted Therapy in Philadelphia Chromosome-Like (Ph-like) ALL</i>	
NIH/National Cancer Institute.....	\$75,000
<i>UNM Cancer Center Support Grant - CTRP Supplement 2014 (Supplement #1)</i>	
New York University.....	\$61,080
<i>Supplemental Award to LLS SCOR</i>	
NIH/National Cancer Institute.....	\$50,000
<i>UNM Cancer Center Support Grant-Cancer Clinical Investigator Team Leadership Award (Supplement #4)</i>	
University of Colorado - Denver.....	\$37,831
<i>Testing Targeted Therapy in Philadelphia Chromosome-Like (Ph-like) ALL</i>	
Albuquerque Area Indian Health Service.....	\$25,000
<i>IHS Oncology Diagnostic and Therapeutic Services Agreement</i>	
Albuquerque Area Indian Health Service.....	\$25,000
<i>IHS Oncology Diagnostic and Therapeutic Services Agreement</i>	
Montefiore Medical Center.....	\$19,719
<i>Detection and Characterization of Ph-Like ALL in the E1910 Study</i>	
Montefiore Medical Center.....	\$19,719
<i>Detection and Characterization of Ph-Like ALL in the E1910 Study</i>	

BRIDGET WILSON

NIH/National Institutes of General Medical Sciences.....	\$2,491,967
<i>Center for the Spatiotemporal Modeling of Cell Signaling</i>	

Cell Biology and Physiology

OSCAR BIZZOZERO

NIH/National Institute of Neurological Disorders and Stroke.....	\$186,862
<i>Cellular, Molecular and Functional Characterization of Proteasomes in EAE</i>	

LAURA GONZALEZ BOSC

American Heart Association.....	\$140,000
<i>Adaptive Immunity in Pulmonary Hypertension</i>	

HELEN HATHAWAY

NIH/National Heart, Lung, and Blood Institute.....	\$371,837
<i>Vascular Smooth Muscle Function in Pulmonary Hypertension</i>	

NIKKI JERNIGAN

NIH/National Heart, Lung, and Blood Institute.....	\$371,837
<i>Vascular Smooth Muscle Function in Pulmonary Hypertension</i>	

NANCY KANAGY

NIH/National Heart, Lung, and Blood Institute.....	\$377,500
<i>Hydrogen Sulfide Regulation of Vascular Tone and Blood Pressure</i>	

Dialysis Clinic, Inc.....	\$372,900
<i>Simulated Sleep Apnea Effects on Renal Function and Blood Pressure in CKD Model</i>	

American Heart Association (Western States Affiliate).....	\$140,000
<i>Impaired Hydrogen Sulfide-Induced Vasodilation in Hypertension</i>	

Exhalix, LLC.....	\$64,936
<i>Transdermal H2S-Sensing Device for Monitoring Peripheral Artery Disease</i>	

ERIC PROSSNITZ

NIH/National Cancer Institute.....	\$313,325
<i>G Protein-Coupled Estrogen Receptor and Breast Carcinogenesis</i>	

THOMAS RESTA

NIH/National Heart, Lung, and Blood Institute.....	\$31,304
<i>The Role of Adaptive Immunity in Chronic Hypoxia-Induced Pulmonary Hypertension</i>	

BENJIMEN WALKER

American Heart Association.....	\$140,000
<i>Regulation of Endothelial BK Channels in Chronic Hypoxia</i>	

NIH/National Heart, Lung, and Blood Institute.....	\$124,917
<i>Minority Institutional Research Training Program</i>	

Center for Infectious Disease and Immunity

JULIE LOVCHIK

Pulmokine, Inc.....	\$44,068
<i>An Inhaled Dry Powder Formulation for Multi-Drug-Resistant Tuberculosis</i>	

MICHELLE OZBUN

NIH/National Institute of Allergy and Infectious Diseases.....	\$271,197
<i>Biology of Infectious Disease and Inflammation</i>	

TERRY WU

DOD/Defense Threat Reduction Agency.....	\$344,725
<i>Evaluation of Novel Subunit Tularemia Vaccines in Rat & Non-Human Primate Aerosol Infection Models</i>	

Sandia National Laboratories.....	\$43,571
<i>Mesoporous Nanoparticle Biodistribution and Efficacy Studies</i>	

GlaxoSmithKline.....	\$29,034
<i>PK Study of GSK944 in Fischer 344 Rats</i>	

Sandia National Laboratories.....	\$28,850
<i>Mesoporous Nanoparticle Biodistribution and Efficacy Studies</i>	

GlaxoSmithKline.....	\$27,634
<i>PK Study of GSK944 in Fischer 344 Rats</i>	

GlaxoSmithKline.....	\$19,242
<i>PK Study of GSK944 in Fischer 344 Rats</i>	

Continuing Medical Education

WILLIAM RAYBURN

Sunovion Pharmaceuticals Inc.....	\$178,900
<i>PeerView inReview: Conversation from Polytherapy to Monotherapy and its Viability in the Partial Onset Seizure Setting</i>	

AbbVie	\$142,150
<i>PeerView inReview: Improving the Management of Endometriosis: Assessing the Standard of Care and Looking Ahead to New Treatment Options</i>	
Celgene Corporation	\$95,000
<i>PeerView inExchange: A Multiple Myeloma Roundtable: Making Sense of New Evidence for Patient Management</i>	
Novartis	\$55,000
<i>Moderate to Severe Psoriasis for the Dermatologist</i>	
Novartis	\$55,000
<i>Therapeutic Strategies in Psoriatic Arthritis: Focus on New Agents</i>	
Lilly USA, LLC	\$53,000
<i>Moderate to Severe Psoriasis for the Dermatologist</i>	
Celgene Corporation	\$50,000
<i>PeerView inReview, What's Now, What's Next: Individualizing the Treatment of Patients with Moderate to Severe Psoriasis for the Dermatologist</i>	
Onyx Pharmaceuticals, Inc.	\$50,000
<i>A Multiple Myeloma Roundtable</i>	
Abbott Laboratories Inc.	\$10,000
<i>Nutrition and Aging: From Cells to Body Systems and Populations</i>	
Northern Navajo Medical Center	\$1,580
<i>ALSO Course Payment Purchase Order</i>	

GE Foundation	\$150,000
<i>Project ECHO Developing a Practice Transformation Network to Improve Quality in FQHC's Planning Grant</i>	
Seattle Indian Health Board	\$150,000
<i>Supporting the Enhanced Implementation of Health and Wellness</i>	
American Academy of Pediatrics	\$136,988
<i>Enhancing Child and Youth Epilepsy Care via the ECHO Model (FY 15)</i>	
American Academy of Pediatrics	\$127,000
<i>ECHO AAP Epilepsy Expansion</i>	
New Mexico Department of Health	\$120,270
<i>Hepatitis and HIV Clinical Consultant Project</i>	
New Mexico Department of Health	\$120,270
<i>Hepatitis and HIV Clinical Consultant Project</i>	
Albuquerque Area Indian Health Board, Inc.	\$94,500
<i>Leveraging Project ECHO for a Comprehensive Approach to Health and Wellness in Indian Country</i>	
McCune Charitable Foundation	\$50,000
<i>ECHO Community Health Worker Initiative</i>	
Blue Cross Blue Shield of NM	\$26,693
<i>Supporting New Mexico Clinical Sites' Participation in Project ECHO</i>	

University of California, San Francisco	\$25,000
<i>Smoking Cessation Leadership Center Collaboration - Justice-Involved Peer Educators</i>	
CDC Foundation	\$21,550
<i>Project ECHO: Expanding Prevention, Care and Treatment Capacity and Reducing Health Care Costs for Hepatitis C and Other Complex Diseases</i>	

MIRIAM KAMAROMY	
The EMMES Corporation	\$199,603
<i>Clinical Coordinating Center for the NIDA Center for the Clinical Trials Network</i>	

Emergency Medicine

JUSTIN BACA	
National Institutes of Health	\$75,500
<i>Point-of-Care Tumor Marker Detection for Germ Cell and Epithelial Ovarian</i>	

LAURA BANKS	
New Mexico Department of Transportation	\$200,000
<i>Pedestrian Safety Initiative</i>	



Yambilette Licon-Munoz, MS

Dental Medicine

GARY CUTTRELL

New Mexico Higher Education Department	\$1,000,000
<i>UNM Dental Residency Program</i>	
New Mexico Higher Education Department	\$1,000,000
<i>UNM Dental Residency Program</i>	
Community Dental Services	\$6,918
<i>Community Dental Services</i>	

VICKI GIANOPOULOS

HRSA/Office of Rural Health Policy	\$500,000
<i>Special Needs Dental Residency Training Program</i>	

CHARLES TATLOCK

New Mexico Department of Health	\$242,650
<i>Basic Oral Health Services</i>	

Dermatology

BARRETT ZLOTOFF

American Medical Group, Inc.	\$15,000
<i>Tele-Dermatology Services</i>	

ECHO Institute

SANJEEV ARORA

GE Foundation	\$3,000,000
<i>Leveraging the ECHO Model to Improve Quality in FQHCs and Transform the US Healthcare System (Year 1)</i>	
Centers for Medicare and Medicaid Services	\$2,419,027
<i>ACA-Leverage Innovative Care and Coordination Model: Project ECHO</i>	
New Mexico Department of Health	\$499,925
<i>UNM HSC Innovations in Telehealth</i>	
Elizabeth Glaser Pediatric AIDS Foundation	\$369,985
<i>Implementing Project ECHO to Build Namibian National Capacity to Mentor and Train Providers</i>	

LAURA BANKS (CONTINUED)

New Mexico Crime Victims Reparation Commission <i>Coordination of Domestic Violence Death Review Team</i>	\$75,000
New Mexico Department of Health <i>Hospital and Health Systems Preparedness Project Addendum</i>	\$71,740
New Mexico Department of Homeland Security & Emergency Management <i>UNM Multi-Hazard Mitigation Planning</i>	\$33,750
New Mexico Department of Health <i>Hospital and Health Systems Preparedness Project</i>	\$21,000
National Association of County and City Health Officials <i>Medical Reserve Corps Volunteer Challenge Award 2014-15</i>	\$15,000
National Association of County and City Health Officials <i>Medical Reserve Corps Volunteer Capacity Building Award 2014-15</i>	\$3,500

DARREN BRAUDE

DOD/Department of the Air Force <i>UNM Educational Services Agreement (Mod 1)</i>	\$345,457
DOD/Department of the Air Force <i>UNM Educational Services Agreement (Mod 2)</i>	\$345,457
DOD/Kirtland Air Force Base <i>UNM Educational Services Agreement</i>	\$298,152
DOD/Kirtland Air Force Base <i>UNM Educational Services Agreement</i>	\$298,152
DOD/Kirtland Air Force Base <i>UNM Educational Services Agreement</i>	\$236,037
City of Albuquerque <i>Medical Directorship</i>	\$74,437
City of Albuquerque <i>Medical Directorship</i>	\$74,437
City of Albuquerque <i>Medical Directorship</i>	\$60,000
DOD/Kirtland Air Force Base <i>UNM Educational Services Agreement</i>	\$27,670
DOD/Kirtland Air Force Base <i>UNM Educational Services Agreement</i>	\$24,063
City of Albuquerque <i>Paramedic Training Program</i>	\$19,056

City of Albuquerque <i>Medical Directorship</i>	\$18,609
Torrance County <i>Medical Director Services</i>	\$12,000
City of Rio Rancho <i>City of Rio Rancho Fire Department Professional Services</i>	\$8,000
Town of Cochiti Lake <i>Medical Director Services - BAA</i>	\$3,450
Motion Picture Set Medics, LLC <i>Professional Services - BAA</i>	\$2,604

CAMERON CRANDALL

Boehringer Ingelheim Pharmaceuticals, Inc. <i>Clinical Trial - Phase 3</i>	\$229,543
PPD Development <i>Clinical Trial Agreement - Phase 3</i>	\$132,917
Shire Human Genetic Therapies, Inc. <i>Clinical Trial Agreement - Phase 3 Supplement</i>	\$50,400
Centers for Disease Control and Prevention <i>IPA-Lynne Fullerton</i>	\$30,000

JOY CROOK

U.S. Drug Enforcement Agency <i>DEA Training</i>	\$4,000
---	---------

ANDREW HARRELL

New Mexico Department of Homeland Security & Emergency Management <i>USAR Task Force Medical Direction</i>	\$43,332
U.S. National Park Service <i>Grand Canyon National Park - EMS Medical Services</i>	\$24,000
U.S. Forest Service <i>Wilderness First Aid</i>	\$3,125

STEVEN MCLAUGHLIN

New Mexico State Fair <i>Emergency Medical Services - BAA</i>	\$49,185
New Mexico Public Safety Department <i>Medical Direction - BAA</i>	\$48,000
City of Rio Rancho <i>Medical Director Services</i>	\$35,000
City of Rio Rancho <i>Medical Director Services</i>	\$35,000
Bernalillo County <i>EMS Refresher Course</i>	\$22,370
New Mexico Donor Services <i>Medical Director Services</i>	\$19,777
DCI Donor Services <i>Professional Services - BAA</i>	\$11,537
Wilderness Medics Inc. <i>Medical Director Services</i>	\$10,000
Valencia Regional Emergency Communication Center <i>Medical Director Services</i>	\$9,000
City of Rio Rancho <i>Professional Services</i>	\$4,000
Carlsbad Caverns National Park <i>Emergency Medicine - Medical Director</i>	\$2,400



Avanika Mahajan, PhD

BRIAN MOORE

New Mexico Department of Health <i>Statewide Emergency Medical Services Medical Direction Project</i>	\$50,000
New Mexico Department of Health <i>Statewide Emergency Medical Services Medical Direction Project</i>	\$5,000

ROBERT PERRY

New Mexico Department of Health <i>Healthcare Preparedness Program</i>	\$12,750
New Mexico Department of Health <i>Healthcare Preparedness Program - Behavioral Health</i>	\$10,750
New Mexico Department of Health <i>Healthcare Preparedness Program - Carrie Tingley</i>	\$10,750

MICHAEL RICHARDS

New Mexico Department of Health <i>Rural Trauma Team Development Course Project</i>	\$4,550
--	---------

ROBERT SAPIEN

HHS/Health Resources and Services Administration <i>EMS for Children State Partnership Grant</i>	\$128,933
New Mexico Department of Health <i>School Nurse Behavioral Health Training</i>	\$50,000
New Mexico Department of Health <i>NM Child Fatality Review</i>	\$10,000

PHILIP SEIDENBERG

Siemens Healthcare Diagnostics, Inc. <i>Clinical Trial Agreement - Phase 4</i>	\$441,730
Siemens Healthcare Diagnostics, Inc. <i>Clinical Trial Agreement - Phase 4 Supplement</i>	\$216,320

STEVEN SEIFERT

American College of Medical Toxicology <i>Participation in Toxic Patient Registry: Snakebite Registry</i>	\$5,000
--	---------

Family and Community Medicine**WILLIAM ATHAS**

New Mexico Department of Health <i>Geospatial Capacity Building</i>	\$30,000
New Mexico Department of Health <i>Geospatial Capacity Building</i>	\$30,000

SALLY BACHOFER

HHS/Health Resources and Services Administration <i>ACA-Residency Training In Primary Care (FY 15)</i>	\$234,962
---	-----------

ANTOINETTE BENTON

New Mexico Department of Health <i>Transdisciplinary Evaluation and Support Clinic</i>	\$472,113
New Mexico Department of Health <i>Transdisciplinary Evaluation and Support Clinic</i>	\$444,843
New Mexico Human Services Department <i>Pre-Admission Screening and Resident Review (FY 15)</i>	\$169,400
New Mexico Human Services Department <i>Pre-Admission Screening and Resident Review (Supplement FY 16)</i>	\$50,050
New Mexico Human Services Department <i>Pre-Admission Screening and Resident Review Supplement (FY 15)</i>	\$50,050



Michaela Dell'Orco, MS

LISA CACARI-STONE

Con Alma Health Foundation <i>ACA-Policy Implementation Study</i>	\$74,000
--	----------

DEBORAH HELITZER

University of Texas Health Science Center at Tyler <i>Evaluation Core of the Southwest Center for Agricultural Health, Injury Prevention and Education</i>	\$88,197
---	----------

JENNIFER HETTEMA

NIH/National Institute on Alcohol Abuse and Alcoholism <i>Mentored Research on Improving Alcohol Brief Interventions in Medical Settings</i>	\$156,198
National Institutes of Health <i>Mentored Research on Improving Alcohol Brief Interventions in Medical Settings</i>	\$149,757
National Institutes of Health <i>Drug Abuse and HIV Adherence Treatments: A Multi-Level, Comparative Meta Analysis</i>	\$143,846
National Institutes of Health <i>Meta-Regression to Identify the Impact of SBIRT Structure and Content on Outcome</i>	\$75,500

National Institutes of Health <i>Mentored Research on Improving Alcohol Brief Interventions in Medical Settings</i>	\$47,143
--	----------

National Institutes of Health <i>Drug Abuse and HIV Adherence Treatments: A Multi-Level, Comparative Meta-Analysis</i>	\$7,571
---	---------

LAUREN HUND

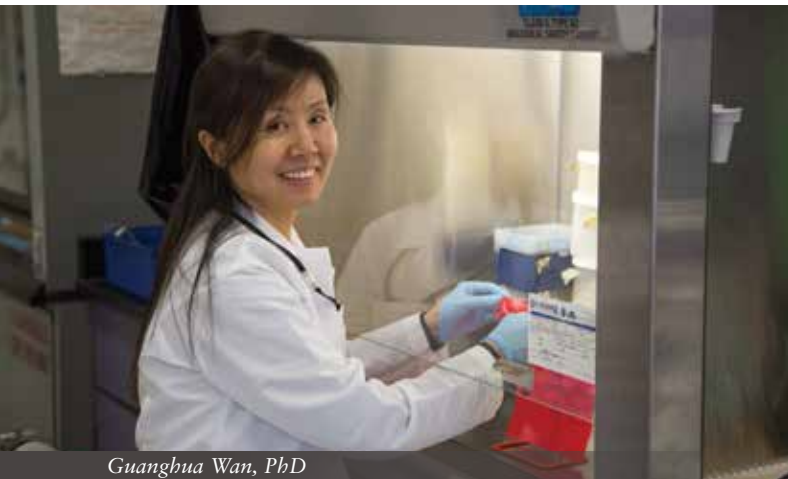
NIH/National Institute of Allergy and Infectious Diseases <i>Accurate and Efficient Measures for HIV Incidence</i>	\$33,000
---	----------

MIRIA KANO

Colorado Foundation for Public Health and the Environment <i>ACA-Building the New Mexico LGBTQ Health Improvement Network: Strengthening Community Health</i>	\$24,771
--	----------

ARTHUR KAUFMAN

New Mexico Department of Health <i>New Mexico Immunization Coalition</i>	\$426,985
Blue Cross Blue Shield of New Mexico <i>Care NM Services</i>	\$224,564
HHS/Health Resources and Services Administration <i>New Mexico Community Health Workers Paraprofessional Training</i>	\$192,406
W.K. Kellogg Foundation <i>Beyond Flexner 2015: Social Mission in Medical Education</i>	\$50,000



Guanghua Wan, PhD

SARAH LATHROP

New Mexico Department of Health\$1,148,361
 ACA-New Mexico Emerging Infections Program

LAWRENCE LEEMAN

Anonymous Non-Profit Foundation\$23,920
 Early Training Grant

JOHN LEGGOTT

HHS/Health Resources and Services Administration \$130,000
 Physician Assistant In Primary Care (FY 15)

MARTHA COLE MCGREW

UNM Medical Group \$126,637
 Center for Reproductive Health Memorandum of Agreement

Bernalillo County Juvenile Detention Center..... \$105,195
 Professional Physician Services

New Mexico Corrections Department\$60,000
 Professional Physician Services

First Choice Community Healthcare.....\$54,080
 First Choice Community Healthcare

Central New Mexico Community College.....\$39,340
 Professional Services

Presbyterian Healthcare Services\$25,200
 Professional Services

JANET PAGE-REEVES

Bernalillo County\$20,600
 Office of Substance Abuse Prevention Bernalillo County Program Evaluation

East Central Ministries\$5,499
 ACA-Culturally Appropriate Options for Diabetes Prevention and Care for Low-
 Income Latinos

TASSY PARKER

Molina Healthcare of New Mexico\$65,000
 Enhancing Molina Healthcare Services for American Indians in New Mexico

Albuquerque Area Indian Health Board, Inc.....\$52,620
 Tribal Solutions

Albuquerque Area Indian Health Board, Inc.....\$41,945
 Tribal Solutions Grant (NARCH)

National Institutes of Health\$18,782
 Healthy Children, Strong Families: American Indian Communities
 Preventing Obesity

REBECCA RAE

Santa Clara Pueblo \$150,000
 Khapoo Owinge RezRIDERS Project

ROBERT RHYNE JR.

HHS/Agency for Healthcare Research and Quality \$291,241
 Health Extension Rural Office: Translating Research Into Localities

VALERIE ROMERO-LEGGOTT

HHS/Health Resources and Services Administration \$730,111
 Health Career Opportunity Program

Association of Public and Land-grant Universities\$5,000
 Shark Tank Pipeline

HELENE SILVERBLATT

HHS/Health Resources and Services Administration \$306,000
 ACA-New Mexico Area Health Education Centers

GREG TAFOYA

National Congress of American Indians\$95,672
 NARCH VII NCAI with UNM: CBPR Dissemination

KRISTINE TOLLESTRUP

HHS/Health Resources and Services Administration \$176,138
 New Mexico MCH Public Health Training Institute

HHS/Health Resources and Services Administration \$101,013
 New Mexico Public Health Traineeships in Epidemiology

Tulane University.....\$92,876
 ACA-Region 6 Public Health Training Center

NINA WALLERSTEIN

National Institutes of Health \$584,115
 Family Listening Project: Multi-Tribal Implementation and Evaluation

Healthy Native Communities Partnership, Inc.....\$18,100
 Participatory Evaluation Design for the Multi-Sector Leadership Program

ROBERT WILLIAMS

National Institutes of Health \$373,725
 Stereotyping in Medical Student Decision-Making: Presence, Origins and
 Solutions

National Institutes of Health \$151,332
 Implementing Personal Health Records to Promote Evidence-based Cancer
 Screening

Internal Medicine

ALLEN ADOLPHE

AbbVie \$782,285
 Clinical Trial Agreement - Phase 3 Supplement

RANA AL-SADI

Crohn's & Colitis Foundation of America.....\$90,000
 MMP-9 Modulates Intestinal Epithelial Tight Junction Barrier and Intestinal
 Inflammation (Year 1 - FY 16)

CHRISTOS ARGYROPOULOS

Dialysis Clinic, Inc..... \$625,000
 Geosurveillance of the Chronic Kidney Disease Epidemic in the US

Dialysis Clinic, Inc.....\$90,000
 A Community-Based Study of the Epidemiology of Chronic Kidney Disease in
 Rural New Mexico

SANJEEV ARORA

Merck & Company, Inc. \$692,253
 Clinical Trial Agreement - Phase 3

AbbVie	\$482,154
<i>Clinical Trial Agreement - Phase 3</i>	
ZymoGenetics, Inc.	\$383,569
<i>Clinical Trial Agreement - Phase 2</i>	
Duke Clinical Research Institute.	\$88,764
<i>Clinical Trial Agreement - Phase 4</i>	
ICON Clinical Research	\$68,376
<i>Clinical Trial Agreement - Phase 4</i>	
AbbVie	\$2,250
<i>Clinical Trial Agreement - Phase 2 Supplement No. 2</i>	

EDGAR BOEDEKER

U.S. Department of Veterans Affairs	\$112,789
<i>Intergovernmental Personnel Act - Dawn Bueschel</i>	

CRISTIAN GEORGE BOLOGA

Givaudan Flavors Corporation	\$305,000
<i>Givaudan Research Agreement - Year 7</i>	

MARK BURGE

Sanofi US Services, Inc.	\$3,200
<i>Clinical Trial Agreement - Phase 3 Supplement</i>	
Sanofi US Services, Inc.	\$3,200
<i>Clinical Trial Agreement - Phase 3 Supplement</i>	

MARCOS BURGOS

New Mexico Department of Health	\$99,073
<i>Tuberculosis Medical Care, Consultation & Education Services</i>	

KATHLEEN COLLERAN

Novartis Pharmaceuticals Corporation	\$88,972
<i>Clinical Trial Phase 3</i>	

RICHARD CROWELL

Lovelace Respiratory Research Institute	\$50,000
<i>Factors for Epigenetic Silencing of Lung Cancer Genes</i>	

MICHELLE HARKINS

Novartis Pharmaceuticals Corporation	\$4,964
<i>Clinical Trial Agreement - Phase 3 Supplement</i>	

THERESA HEYNEKAMP

Cystic Fibrosis Foundation	\$38,480
<i>CF Care Center Program</i>	
The University of Utah	\$13,500
<i>Multicenter Validation of Predictive Sputum Biomarkers in Cystic Fibrosis</i>	

MICHELLE IANDIORIO

University of Colorado Denver Anschutz Medical Campus	\$232,250
<i>New Mexico AIDS Education and Training Center</i>	

PATRICIA KAPSNER

GlaxoSmithKline.....	\$213,915
<i>Clinical Trial Agreement - Phase 4</i>	
Cmed Inc.....	\$40,234
<i>Clinical Trial Agreement - Phase 3</i>	
Novartis Pharmaceuticals Corporation	\$12,660
<i>Clinical Trial Agreement - Phase 3 Supplement</i>	
Novartis Pharmaceuticals Corporation	\$7,504
<i>Clinical Trial Agreement - Phase 3 Supplement No. 2</i>	
Novo Nordisk, Inc.....	\$3,089
<i>Clinical Trial Agreement - Phase 3 Supplement</i>	

DENECE KESLER

HHS/Health Resources and Services Administration	\$224,826
<i>Radiation Exposure Screening and Education Program in New Mexico</i>	
Lovelace Respiratory Research Institute	\$75,000
<i>Lovelace Respiratory Research Institute - Occupational Medicine Services</i>	
Lovelace Respiratory Research Institute	\$6,000
<i>Lovelace Respiratory Research Institute - Consulting Services</i>	
Johns Hopkins University	\$5,000
<i>Development of a Medical Screening Program for Former LANL & SNL Workers</i>	
Honeywell Corporation	\$2,500
<i>Honeywell Aerospace of Albuquerque - Clinician Services</i>	

IRENA KING

Fred Hutchinson Cancer Research Center	\$32,007
<i>TREC Coordination Center</i>	

WARREN LASKEY

DVA/Veteran's Administration Medical Center	\$763,848
<i>VA Interventional Cardiology</i>	
New Mexico Department of Health	\$37,130
<i>Stroke and STEMI Center Development</i>	
New Mexico Department of Health	\$15,130
<i>Stroke and STEMI Center Development</i>	

SAMUEL LEE

Johns Hopkins University	\$6,000
<i>Cryptococcus Infection Network Cohort Study for Non-HIV Patients - Phase 3</i>	
Astellas USA Foundation	\$5,000
<i>12th Annual Meeting South Central Medical Mycology Group</i>	
Astellas USA Foundation	\$2,500
<i>13th Annual Meeting South Central Medical Mycology Group</i>	

THOMAS MA

National Institute of Diabetes and Digestive and Kidney Diseases	\$417,221
<i>Regulation of Intestinal Paracellular Permeability</i>	
U.S. Department of Veterans Affairs	\$97,736
<i>Intergovernmental Personnel Act - Manmeet Rawat</i>	

LANA MELENDRES-GROVES

Bayer HealthCare Pharmaceuticals Inc.....	\$30,000
<i>Clinical Trial Agreement - Phase 4</i>	
Pharmaceutical Research Assoc.	\$7,975
<i>Clinical Trial Agreement - Phase 4</i>	



Martha Martinez-Grimes, PhD

POPE MOSELEY

Albuquerque Area Indian Health Service <i>IHS Specialty Services</i>	\$87,488
University of Copenhagen <i>Professional Services Agreement</i>	\$42,090
Zenith Administrators <i>Outpatient Professional Services</i>	\$25,000
Zenith Administrators <i>Outpatient Professional Services - BAA</i>	\$25,000
QTC Medical Group <i>Second Medical Opinion Evaluations</i>	\$10,750

ORRIN MYERS

National Institutes of Health <i>Geographic and Multilevel Influences of Neighborhood and School Environments on the Development of Obesity Among Children in a Border Community</i>	\$22,497
---	----------

PRASHANT NIGHOT

National Institute of Diabetes and Digestive and Kidney Diseases <i>Role of the Chloride Channel CIC-2 in Intestinal Tight Junction Barrier Recovery</i>	\$147,916
---	-----------

TUDOR OPREA

NIH/National Cancer Institute <i>Illuminating the Druggable Genome - The Knowledge Management Center</i>	\$1,801,454
University of Gothenburg <i>Visiting Scientist Agreement</i>	\$25,000
National Institutes of Health <i>Structural and Functional Analysis of Glucose Transporters</i>	\$11,665

KIMBERLY PAGE

NIH/National Institute on Drug Abuse <i>Acute Hepatitis C Infection in Young Injectors</i>	\$1,332,959
NIH/National Institute on Drug Abuse <i>Sexually Transmitted Infections Clinical Trials Group</i>	\$884,605
National Institutes of Health <i>InC3: International Collaborative of Prospective Studies of HIV and Hepatitis in IDU</i>	\$457,155
National Institutes of Health <i>InC3: International Collaborative of Prospective Studies of HIV and Hepatitis in IDU</i>	\$386,153
Centers for Disease Control and Prevention <i>Epidemiology, Prevention and Treatment of HCV in Young Adult Persons who Inject Drugs in Non-Urban New Mexico (Hepatitis-TIPS)</i>	\$299,973
National Institutes of Health <i>Acute Hepatitis C Infection in Young Injectors (Restricted Supplement for AIDS)</i>	\$119,766
National Institutes of Health <i>Sexually Transmitted Infections Clinical Trials Group</i>	\$104,000

National Institutes of Health <i>Acute Hepatitis C Infection in Young Injectors</i>	\$94,227
National Institutes of Health <i>CIPI: Cambodia Integrated HIV and Drug Prevention Implementation Program</i>	\$39,492
National Institutes of Health <i>CIPI: Cambodia Integrated HIV and Drug Prevention Implementation Program</i>	\$29,321
National Institutes of Health <i>InC3: International Collaborative of Prospective Studies of HIV and Hepatitis in IDU (Supplement)</i>	\$990

DOUGLAS PERKINS

National Institutes of Health <i>Training and Research on Severe Malarial Anemia</i>	\$242,882
Los Alamos National Laboratory <i>Characterize the Emergence of Antibiotic Resistance and Virulence in the Immunocompromised Population</i>	\$218,756

ARTI PRASAD

The Bell Group, Inc. <i>Professional Services: UNMMG Center for Life</i>	\$25,000
---	----------

DAVID SCHADE

National Institutes of Health <i>Glycemia Reduction Approaches in Diabetes: A Comparative Effectiveness Study</i>	\$475,577
NIH/National Institute of Diabetes and Digestive and Kidney Diseases <i>Diabetes Prevention Program Outcomes Study - Phase 3</i>	\$232,897
National Institutes of Health <i>Glycemia Reduction Approaches in Diabetes: A Comparative Effectiveness Study</i>	\$158,526
National Institutes of Health <i>Epidemiology of Diabetes Intervention and Complications</i>	\$123,450
National Institutes of Health <i>Hearing Impairment in Long-Term Type 1 Diabetes</i>	\$35,485
National Institutes of Health <i>Residual Beta Cell Function in Patients with Long-Term Type 1 Diabetes</i>	\$15,384
National Institutes of Health <i>Type 1 Diabetes TrialNet</i>	\$2,000

MARK SHELDON

GlaxoSmithKline LLC <i>Clinical Trial Agreement - Phase 3</i>	\$98,865
--	----------

AKSHAY SOOD

Agency for Healthcare Research and Quality <i>Novel Role for Adiponectin-Modulating Drugs for Asthma in the Obese</i>	\$395,123
Miners Colfax Medical Center <i>Miner's Colfax Medical Center-Medical Consultation & Care</i>	\$146,393
American Thoracic Society <i>Household Air Pollution from Solid Fuel Combustion Smoke and Global Health Equality - A Workshop</i>	\$18,795

ELAINE THOMAS

New Mexico Department of Health <i>STD Provider Training Project: FY 15</i>	\$67,757
--	----------

MARK UNRUH

Anonymous Non-Profit Foundation <i>Medical Directorship and QA</i>	\$1,181,620
Baystate Medical Center <i>ACA-Shared Decision Making and Renal Supportive Care</i>	\$214,607
Dialysis Clinic, Inc. <i>DCI Biostatistician</i>	\$184,574



Diane Lidke, PhD, Bridget Wilson, PhD, and Marta Cooperstein, PhD

Dialysis Clinic, Inc.	\$178,945
<i>Quality of Life Indicators Among Patients with Chronic Kidney Disease</i>	
Dialysis Clinic, Inc.	\$168,814
<i>Acute Kidney Injury Outcomes</i>	
Dialysis Clinic, Inc.	\$139,410
<i>Provider Knowledge, Attitude and Practices Surrounding Conservative Management for Chronic Kidney Disease: A Survey Study</i>	
Dialysis Clinic, Inc.	\$133,926
<i>Clinical Trial Agreement - Phase 2</i>	
Dialysis Clinic, Inc.	\$127,224
<i>Predicting CKD in an Underserved Population</i>	
University of Washington.....	\$96,739
<i>ACA-Treatment Options for Depression in Patients Undergoing Hemodialysis</i>	
Anonymous Non-Profit Foundation.....	\$54,240
<i>Medical Directorship and QA - Travel</i>	
Anonymous Non-Profit Foundation.....	\$54,240
<i>Medical Directorship and QA - Travel</i>	
Dialysis Clinic, Inc.	\$5,155
<i>Equipment for Kidneys Research</i>	

HEATHER WARD

National Institutes of Health	\$113,015
<i>Targeting Fibrosis in Polycystic Kidney Disease</i>	
Dialysis Clinic, Inc.	\$60,000
<i>Repurposing Relaxin to Inhibit Cystogenesis and Progression of Polycystic Kidney Disease</i>	

BRUCE WILLIAMS

HHS/Health Resources and Services Administration	\$694,866
<i>Comprehensive HIV Early Intervention Services/ Ryan White Part C Outpatient EIS Program</i>	
HHS/Health Resources and Services Administration	\$472,628
<i>Coordinated Services and Access to Research for Women, Infants, Children & Youth</i>	
New Mexico Department of Health	\$316,500
<i>HIV Services Provider Program - BAA</i>	
HHS/Health Resources and Services Administration	\$38,000
<i>Comprehensive HIV Early Intervention Services/ Ryan White Part C Outpatient EIS Program</i>	

Molecular Genetics and Microbiology

ELLEN BESWICK

NIH/National Institute of Diabetes and Digestive and Kidney Diseases.	\$27,000
<i>Alteration in CD90+ Stromal Cells in TH1/TH17 Regulation in Crohn's Disease</i>	

KIRAN BHASKAR

NIH/National Institute of Neurological Disorders and Stroke	\$330,313
<i>The Role of Inflammasome Signaling in Tauopathies</i>	

JUDY CANNON

NIH/National Institute of Allergy and Infectious Diseases	\$377,500
<i>The Role of PKCtheta in T-Cell and T-ALL Migration</i>	

VOJO DERETIC

NIH/National Institute of Allergy and Infectious Diseases	\$656,042
<i>Autophagy Against Tuberculosis and HIV</i>	
NIH/National Institute of Allergy and Infectious Diseases	\$399,999
<i>Pattern Recognition Receptors and Autophagy in Mtb Control in AIDS</i>	



Samantha Schwartz

National Institutes of Health	\$25,937
<i>TLR4 Evasion, Bacterial Persistence and Chronic Inflammation</i>	
NIH/National Institute of Allergy and Infectious Diseases	\$25,937
<i>Pattern Recognition Receptors and Autophagy in Mtb Control in AIDS</i>	

MARY ANN OSLEY

NIH/National Institute of General Medical Sciences.....	\$347,363
<i>Genetic Analysis of H2B Ubiquitylation in Yeast</i>	
NIH/National Institute of General Medical Sciences.....	\$343,039
<i>Genetic Analysis of H2B Ubiquitylation in Yeast</i>	

MICHELLE OZBUN

NIH/National Institute of Dental and Craniofacial Research	\$226,500
<i>Targeted Therapy for EGFR Pathway in HPV + HNSCCs</i>	
University of Pittsburgh	\$90,909
<i>Genetic Alterations of PIK3CA Identify Actionable Targets for HPV-Associated Head and Neck Cancer</i>	

NIH/National Cancer Institute.....	\$33,885
<i>Regulation of Human Papillomavirus Replication via Cell-Signaling Pathways</i>	
National Institutes of Health	\$444
<i>Regulation of Human Papillomavirus Replication Via Cell-Signaling Pathways</i>	

DAVID PEABODY

AgilVax, Inc.	\$62,500
<i>Affinity Selection on Antiviral mAb Targets</i>	

XUEXIAN YANG

NIH/National Institute of Allergy and Infectious Diseases	\$364,750
<i>Regulation of T Helper Cell Effector Function</i>	

Neurology

CHRISTOPHER STEWART CALDER

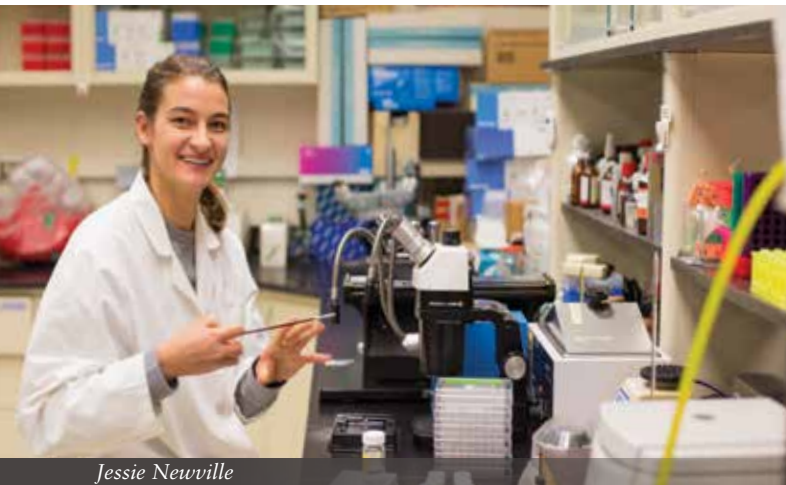
GBS/CIDP Foundation International.....	\$8,000
<i>Clinical Trial Agreement - Phase 3</i>	

BRUCE FISCH

SAGE Therapeutics	\$28,750
<i>Clinical Trial Agreement - Phase 3</i>	

COREY FORD

Novartis	\$96,593
<i>Clinical Trial Agreement - Phase 3</i>	
Teva Pharmaceutical Industries.....	\$35,560
<i>Clinical Trial Agreement - Phase 4</i>	
University of California, San Francisco.....	\$10,487
<i>Treatment of Multiple Sclerosis with Siponimod Clinical Trial Phase 3 - Subward</i>	



Jessie Newville

MOLLY KING

National Institutes of Health\$2,058
Insulin Resistance Intervention after Stroke Trial

JIM LIU

NIH/National Institute of General Medical Sciences\$1,048,334
Integrative Program in CNS Pathophysiology Research (COBRE)

LESLIE MORRISON

University of California, San Francisco \$182,577
Clinical Trial Agreement - Phase 3 - The Brain Vascular Malformation Consortium: Predictors of Clinical Course

SUROJIT PAUL

NIH/National Institute of Neurological Disorders and Stroke \$330,313
Role of Brain-Specific Tyrosine Phosphatase STEP in Neuroprotection and Death

NIH/National Institute of Neurological Disorders and Stroke\$75,500
Role of Brain Specific Tyrosine Phosphatase STEP in Neuroprotection and Death - Administrative Supplement

JOHN PHILLIPS

The Mind Research Network \$100,745
MRN Medical Director

The Mind Research Network\$1,286
MRN Medical Director

RANJANA PODDAR

NIH/National Institute of Neurological Disorders and Stroke \$330,313
Molecular Basis of Hyperhomocysteinemia-Induced Brain Injury in Ischemic Stroke

STEFAN POSSE

Rigshospitalet\$19,636
Visiting Research Scientist Summer 2014

University of Copenhagen\$17,371
Visiting Research Scientist February 2015 - April 2015

National Institutes of Health\$3,127
Magnetic Resonance Spectroscopy of Breast Cancer Using Model-Based Localization

GARY ROSENBERG

NIH/National Institute of Neurological Disorders and Stroke \$546,112
Bio-Markers for White Matter Injury in Mixed and Vascular Cognitive Impairment

NIH/National Institute of Neurological Disorders and Stroke \$327,009
White Matter Hypoxia in Novel Model of MMP-Mediated Inflammation SHR/SP

The Mind Research Network \$142,399
MRN Administrative Operations

U.S.-Israel Binational Science Foundation\$21,137
Blood-Brain Barrier Permeability Abnormalities and Post-Stroke Cognitive Decline

Eastern New Mexico Medical Center\$10,000
Professional Services

LAUREL SILLERUD

AMAG Pharmaceuticals, Inc.\$23,100
Ferumoxylol Contrast for the MRI Imaging for Diabetic Osteomyelitis: An Innovative Study Exploring Iron Contrast Agents for Imaging Osteomyelitis in Diabetic Patients

JENNIFER ANN VICKERS

New Mexico Department of Health \$131,875
Children's Medical Services (FY 15)

YI YANG

NIH/National Institute of Neurological Disorders and Stroke \$226,500
Longitudinal Monitoring of Microglia Activation After Stroke with SPION-Enhanced MRI

SARAH YOUSSEF

Catalyst Pharmaceutical Partners, Inc.\$6,401
Clinical Trial Agreement - Phase 4

Neurosciences

ANDREA ALLAN

NIH/National Institute of Environmental Health Sciences \$301,942
Epigenetic Changes in the Glucocorticoid Receptor Gene Due to Arsenic Exposure

NIH/National Institute of Environmental Health Sciences\$33,550
Epigenetic Changes in the Glucocorticoid Receptor Gene Due to Arsenic Exposure

ERIN MILLIGAN

NIH/National Institute on Alcohol Abuse and Alcoholism \$217,063
Chronic Neuropathic Pain, Glial-Immune Responses and Fetal Alcohol Exposure (MPI)

NORA PERRONE-BIZZOZERO

NIH/National Institute on Drug Abuse \$404,353
Competing Roles of microRNAs and RNA-Binding Proteins in Drug Addiction

NIH/National Institute on Drug Abuse\$42,477
Competing Roles of MicroRNAs and RNA-Binding Proteins in Drug Addiction - Diversity Supplement - Robert Oliver

The Mind Research Network\$41,783
Mining the Genomewide Scan: Genetic Profiles of Structural Loss in Schizophrenia

DANIEL SAVAGE

NIH/National Institute on Alcohol Abuse and Alcoholism\$1,618,836
Fetal Ethanol-Induced Behavioral Deficits: Mechanisms, Diagnoses and Interventions

NIH/National Institute on Alcohol Abuse and Alcoholism\$1,528,781
Fetal Ethanol-Induced Behavioral Deficits: Mechanisms, Diagnoses and Interventions

NIH/National Institute on Alcohol Abuse and Alcoholism \$307,647
Fetal Ethanol Effects on Histaminergic Regulation of Neurotransmission

CARLOS VALENZUELA

NIH/National Institute on Alcohol Abuse and Alcoholism \$325,529
Alcohol and Cerebellar Circuits

NIH/National Institute on Alcohol Abuse and Alcoholism \$144,369
Alcohol Research Training in Neuroscience

Neurosurgery

J FRED HARRINGTON

K2M, Inc. \$152,128
Clinical Trial Agreement - Phase 4

REX JUNG

Johnson O'Connor Research Foundation \$300,000
The Neuroscience of Aptitude

EDWIN NEMOTO

Rio Grande Neurosciences, Inc. \$79,408
Animal Studies on Repetitive Mild TBI (KB Invitor Sept 2014)

Rio Grande Neurosciences, Inc. \$13,750
Animal Studies on Repetitive Mild TBI (KB Invitor Sept 2014)

Rio Grande Neurosciences, Inc. \$13,006
Effect of POEMS on cGMP Response During OGD

Rio Grande Neurosciences, Inc. \$9,388
PEMF and Microperfusion in TBI, Stroke and Neuroinflammatory Animal Models - Supplement

Rio Grande Neurosciences, Inc. \$8,250
PEMF and Microperfusion in TBI, Stroke and Neuroinflammatory Animal Models - Supplement

TAMARA ROITBAK

NIH/National Institute of Neurological Disorders and Stroke \$327,009
In Vivo Inhibition of Specific microRNAs to Support Post-Stroke Revascularization

CHRISTOPHER TAYLOR

Johns Hopkins University \$119,171
MISTIE III - A Phase 3 Randomized, Open-Label, 500-Subject Clinical Trial of Minimally Invasive Surgery Plus rt-PA in the Treatment of Intracerebral Hemorrhage

HUY TRAN

University of Cincinnati \$87,603
Ethnic and Racial Variations with Intracerebral Hemorrhage - Per Patient - Phase 4

University of Cincinnati \$42,576
Ethnic and Racial Variations with Intracerebral Hemorrhage - Administrative - Phase 4

University of Minnesota \$23,746
Antihypertensive Treatment of Cerebral Hemorrhage

HOWARD YONAS

Center for Medicare and Medicaid Services \$5,198,471
ACA-Access to Critical Cerebral Emergency Support Services HCIA2

New Mexico VA Health Care System \$177,156
Neurosurgery Services

New Mexico Department of Veterans' Services \$88,578
VA Neurosurgery Services Interim Agreement

New Mexico Department of Veterans' Services \$88,578
VA Neurosurgery Services Interim Agreement

Guadalupe County Hospital \$45,000
Master Services Agreement - ACCESS

Nor-Lea General Hospital \$25,000
Master Hospital Services Agreement

Roswell Hospital Corp. \$25,000
Clinical Services - ACCESS

New Mexico Department of Health \$16,860
UNM Pain Center Naloxone Co-Prescription Pilot Project

New Mexico Governor's Commission on Disability \$15,000
Approach for Management of TBI

New Mexico Tumor Registry

CHARLES WIGGINS

NIH/National Cancer Institute \$2,860,998
Surveillance, Epidemiology and End Results Program (Task Order 5)

NIH/National Cancer Institute \$28,121
TOREP- SEER RRSS #14-3 Patterns of Care

Memorial Medical Center \$20,000
Memorial Medical Center Abstracting Services

Christus St. Vincent Regional Medical Center \$15,000
Abstracting at Christus St. Vincent RMC

Christus St. Vincent Regional Medical Center \$15,000
Abstracting at Christus St. Vincent RMC - BAA

New Mexico Department of Health \$6,330
Breast and Cervical Cancer Surveillance Project

U.S. Department of Justice \$2,000
Radiation Exposure Compensation Program

Obstetrics and Gynecology

KATE AUSTIN

New Mexico Department of Health \$140,000
Prenatal Medical Services Project

New Mexico Department of Health \$54,960
High-Risk Prenatal Care Project

GENA DUNIVAN

Pelvalon \$2,000
Clinical Trial Agreement - Phase 4

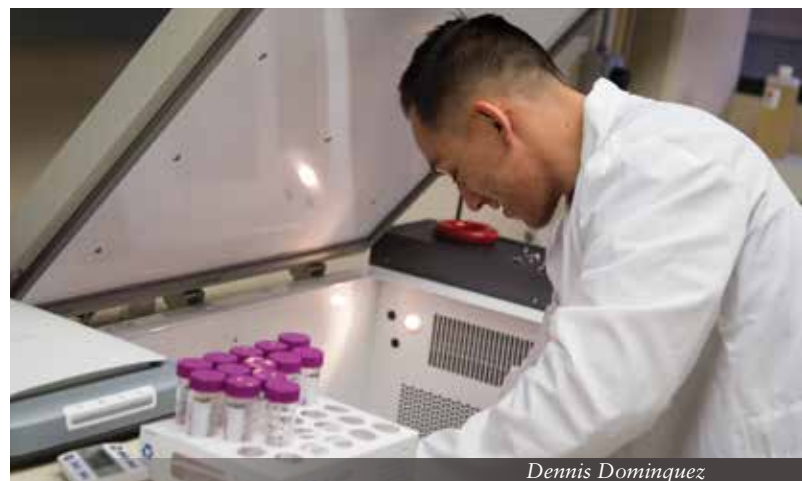
EVE ESPEY

Anonymous Non-Profit Foundation \$359,886
Fellowship in Family Planning

First Choice Community Healthcare \$82,530
Midwifery Services

New Mexico Department of Health \$82,460
High-Risk Prenatal Care

The University of Utah \$25,164
BLIS: Breastfeeding Levonorgestrel Study



Dennis Dominquez

YUKO KOMESU

NIH/National Center for Complementary and Alternative Medicine... \$342,864
Brain-Centered Therapy Versus Medication for Urgency Urinary Incontinence: An RCT (MPI)

Research Triangle Institute... \$231,803
Human Microbiome Study-ESTEEM

WILLIAM RAYBURN

Albuquerque Area Indian Health Service... \$87,488
IHS Specialty Services

REBECCA ROGERS

NIH/National Institute of Child Health and Human Development... \$306,219
RCT of Hypnotherapy vs. Tolterodine for OAB: Voiding and Brain Activation Changes

RAMEET HARPAL SINGH

Society of Family Planning... \$87,992
Perceptions of Non-Surgical Permanent Contraception in India

New Mexico Department of Health... \$67,520
Tubal Ligation Sterilization Surgical Procedures

UNM-Sponsored - Bayer Healthcare Pharmaceuticals, Inc. ... \$50,291
PI Initiated - Clinical Trial Agreement - Phase 4

New Mexico Department of Health... \$1,108
Vasectomy Sterilization Surgical Procedures Project (FY 15 Supplement)

NANCY SOKKARY

Society of Family Planning... \$30,000
Providing Adolescent Contraception in the Emergency Room

Office of the Medical Investigator**HANNAH KASTENBAUM**

New Mexico Department of Health... \$4,220
New Mexico Violent Death Reporting System (FY 16)

New Mexico Department of Health... \$1,055
New Mexico Violent Death Reporting System (FY 15)

SARAH LATHROP

New Mexico Public Safety Department... \$13,250
2014 Paul Coverdell Basic

KURT NOLTE

National Association of Medical Examiners... \$198,890
Compensation for Executive Vice President

National Association of Medical Examiners... \$18,301
Executive Vice President Services

LORI PROE

Intersociety Council for Pathology Information... \$1,000
Medical Student Interest Group

ROSS ZUMWALT

DVA/Veteran's Administration Medical Center... \$78,109
Autopsy Services for POWs

New Mexico Crime Victims Reparation Commission... \$53,655
Grief Intervention for Homicide Survivors

DVA/Veteran's Administration Medical Center... \$45,691
Autopsy Services for POWs

New Mexico Department of Health... \$25,000
Public Health Preparedness and Response to Bioterrorism - BT Grant

New Mexico Department of Health... \$21,100
New Mexico Sudden Unexpected Infant Death Registry

Orthopaedics**THOMAS DECOSTER**

Center for Orthopaedic Trauma... \$5,000
Center for Orthopaedic Trauma Advancement - Educational Grant

DePuy Orthopaedics, Inc. ... \$2,000
AONA Course - Toronto

GEHRON TREME

DePuy Orthopaedics, Inc. ... \$10,000
AONA Course - New Orleans

Synthes, Inc. ... \$10,000
AONA Course - Phoenix

DePuy Orthopaedics, Inc. ... \$9,180
AONA Course - Toronto

DePuy Orthopaedics, Inc. ... \$4,000
AONA Course - New Orleans

DePuy Orthopaedics, Inc. ... \$2,295
AONA Course - Atlanta

Synthes, Inc. ... \$2,000
AONA Course - Charlotte

DANIEL WASCHER

Arthrex, Inc. ... \$20,000
Arthrex Sports Fellowship Grant/Educational Grant

U.S. Department of Justice... \$9,730
Expert Witness (Medeles v. U.S.A.)

Pathology**ELAINE BEARER**

NIH/National Institute of Mental Health... \$562,571
Live Imaging of Brain Circuitry in Mouse Models of PTSD

THERESE BOCKLAGE

TriCore Reference Laboratories... \$105,800
Professional Service Agreement - Diagnostics WSI

DOUGLAS CLARK

TriCore Reference Laboratories... \$2,788,864
Medical Direction

TriCore Reference Laboratories... \$546,152
Medical Direction

TriCore Reference Laboratories... \$364,101
Medical Direction

United Blood Services... \$223,695
Professional Services



Dawn Delfin, PhD

UNM Medical Group.....	\$154,479
<i>Memorandum of Agreement FY 15</i>	
UNM Medical Group.....	\$152,230
<i>Memorandum of Agreement FY 14</i>	
UNM Medical Group.....	\$149,980
<i>Memorandum of Agreement FY 13</i>	

VITTORIO CRISTINI

Methodist Hospital Research Institute.....	\$96,546
<i>Center for Systematic Modeling of Cancer Development</i>	
Methodist Hospital Research Institute.....	\$34,301
<i>Center for Oncophysics: PSOC Expansion Project 1</i>	
NIH/National Cancer Institute.....	\$15,343
<i>Texas Center for Cancer Nanomedicine</i>	
Methodist Hospital Research Institute.....	\$11,876
<i>Center for Oncophysics: PSOC Expansion Project 6</i>	

KENDALL CROOKSTON

Blood Systems Foundation.....	\$80,299
<i>Transfusion Medicine Fellowship</i>	

TRACY IRENE GEORGE

TriCore Reference Laboratories.....	\$105,500
<i>Professional Services Agreement Between UNM Regents and TriCore Reference Laboratories/Celgene</i>	
TriCore Reference Laboratories.....	\$10,252
<i>PSA Seattle Genetics</i>	

JENNIFER GILLETTE

National Institutes of Health.....	\$377,500
<i>Functional Role of Tetraspanin CD82 in Hematopoietic Stem Cell Interaction</i>	
National Institutes of Health.....	\$30,479
<i>Spatiotemporal Analysis of CD82-Mediated Integrin Adhesion</i>	
National Institutes of Health.....	\$4,000
<i>Eighth International Meeting on Tetraspanins and Membrane Scaffolds</i>	
The Company of Biologists, Ltd.....	\$3,137
<i>Eighth International Conference on Tetraspanins and Membrane Scaffolds</i>	
National Institutes of Health.....	\$444
<i>Spatiotemporal Analysis of CD82-Mediated Integrin Adhesion (Supplement)</i>	

PATTI GRAVITT

National Institutes of Health.....	\$83,254
<i>Vaginal Microbiota, Immune Responses and Vulvovaginal Symptoms During Menopause</i>	

GLYNNIS INGALL

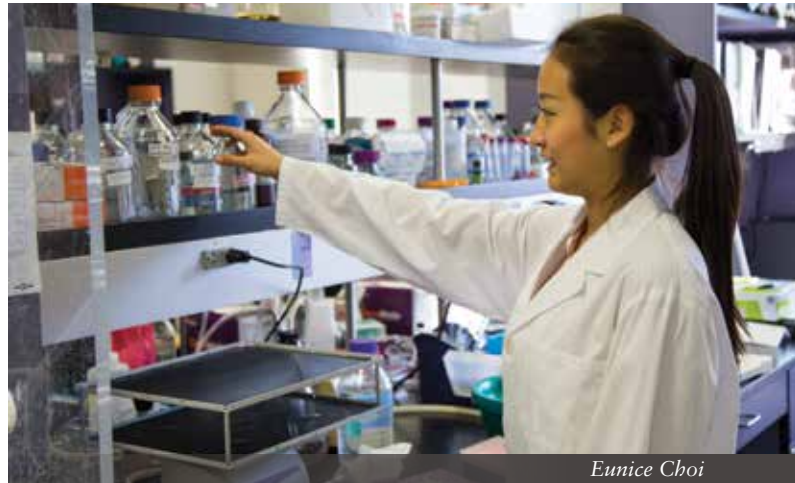
Crownpoint Healthcare Facility.....	\$26,080
<i>Laboratory Directorship</i>	
Crownpoint Healthcare Facility.....	\$26,080
<i>Laboratory Directorship FY 15 Mod 1</i>	
Crownpoint Healthcare Facility.....	\$26,080
<i>Laboratory Directorship FY 15 Mod 2</i>	

SARAH LATHROP

Association of Public Health Laboratories.....	\$13,715
<i>Assessing Current Diagnostic Practices Among Clinical Labs in FoodNet Catchment Area</i>	

DIANE LIDKE

NIH/National Institute of General Medical Sciences.....	\$285,264
<i>Single Molecule Imaging to Quantify FCRI Signaling Dynamics</i>	



Eunice Choi

Human Frontier Science Program.....	\$110,000
<i>Nano-Mechano-Biology: Spatiotemporal Remodeling of Membrane Nanoplatfoms Under Mechanical Forces</i>	
National Institutes of Health.....	\$25,000
<i>Mechanisms of Apoptotic Calcium Signaling</i>	

AARON NEUMANN

National Institutes of Health.....	\$420,379
<i>Nano and Microscale Molecular Machines for Innate Immune Sensing of Candida</i>	
American Association of Immunologists.....	\$22,476
<i>Microscale Innate Immune Mechanisms for Recognition of Candida Species Fungal Pathogens</i>	

LARRY SKLAR

NIH/National Cancer Institute.....	\$296,948
<i>Illuminating the Druggable Genome Knowledge Management Center</i>	
National Institutes of Health.....	\$82,875
<i>Detection and Usage of Novel Compounds to Stimulate NLRP3 Inflammasome Activity</i>	

ANGELA WANDINGER-NESS

NIH/National Institute of General Medical Sciences.....	\$774,636
<i>Academic Science Education and Research Training</i>	
NIH/National Institute of Dental and Craniofacial Research.....	\$444
<i>OFD1 as Constituent of a Multimeric Protein Complex in Odontoblast Primary Cilia - Supplement</i>	

COSETTE WHEELER

NIH/National Cancer Institute.....	\$1,374,545
<i>New Mexico HPV Outcomes, Practice Effectiveness and Surveillance</i>	
NIH/National Cancer Institute.....	\$1,003,227
<i>New Mexico HPV Outcomes, Practice Effectiveness and Surveillance</i>	
GlaxoSmithKline.....	\$850,000
<i>Clinical Trial - Phase 3</i>	

BRIDGET WILSON

NIH/National Institute of General Medical Sciences.....	\$2,491,967
<i>Center for Spatiotemporal Modeling of Cell Signaling</i>	
Los Alamos National Laboratory.....	\$113,500
<i>Three-Dimensional Molecular Tracking of IgE-Fc3RI in Live Cells</i>	
National Institutes of Health.....	\$29,887
<i>Validation of the Pre-BCR Signaling Complex in Pre-B ALL Cell Model by Two-Color Single-Particle Tracking and Peptidomimetic Inhibition</i>	



Nora Perrone-Bizzozero, PhD and Amy Gardiner, PhD

BRIDGET WILSON (CONTINUED)

MedImmune, Inc.\$12,500
Sponsored Research Agreement: UNM HSC and MedImmune

STEPHEN YOUNG

nano MR, Inc. \$115,000
Specimen Acquisition Study to Evaluate the NanoMR Pathogen Detection System

Life Technologies Corporation\$30,000
Preparation of Microbial Stock

ROSS ZUMWALT

Lovelace Health System\$25,000
Autopsy Services

Pediatrics

SHIRLEY ABRAHAM

Oregon Health & Science University.\$34,250
Regional Hemophilia Network - Mountain States

University of Colorado - Denver.\$32,021
Public Health Surveillance for the Prevention of Bleeding and Clotting

American Thrombosis and Hemostasis Network\$11,250
ATHN Data Quality Counts - BAA

TANYA BAKER-MCCUE

New Mexico Library Foundation\$1,000
New Mexico Library Foundation Grant

KOH BOAYUE

Children's Hospital of Philadelphia\$76,150
Clinical Trial Agreement - Non-Industry

St. Baldrick's Foundation.\$69,000
St. Baldrick's Infrastructure Development Grant

Children's Hospital of Philadelphia\$37,000
COG Clinical Trial Agreement Subaward - Phases 2 and 3

Children's Hospital of Philadelphia\$10,000
Clinical Trial Agreement- Phase 2

Children's Hospital of Philadelphia\$4,800
Health Effects After Anthracycline and Radiation Therapy: Dexrazone and Prevention of Anthracycline

FRANCINE CAFFEY

New Mexico Department of Health\$4,774
Summer Asthma Institute Project

CAROL CLERICUZIO

University of California, San Diego\$5,000
Prospective Follow-Up of Pregnancy Exposure to Humira

LORETTA CORDOVA DE ORTEGA

New Mexico Department of Health \$317,555
Children's Medical Services Outreach Clinics Project

New Mexico Department of Health \$132,930
Children's Medical Services Outreach Clinics Project - FY 16 - Supplement - Pediatric Cardiology Clinic

New Mexico Department of Health\$66,465
Children's Medical Services Outreach Clinics Project - FY 15 - Supplement - Pediatric Cardiology Clinic

TriCore Reference Laboratories\$26,164
Genetic Counseling Services

San Juan Regional Medical Center\$25,000
Professional Services Agreement

Molina Healthcare of New Mexico\$20,000
In-Home Assessments

Taos Clinic for Children and Youth\$10,000
Professional Services via Telemedicine - BAA

PHC-Las Cruces, Inc.\$6,394
Professional Services/Consultations - BAA

Northern Navajo Medical Center\$4,800
On-Site Pediatric Genetic Clinic

Mountain View Regional Medical Center\$2,500
Professional Services

Lordsburg Municipal Schools\$2,397
Professional Services

Ben Archer Health Center, Inc.\$550
Professional Service Agreement

LEA DAVIES

HHS/Health Resources and Services Administration \$333,642
New Mexico Pediatric Pulmonary Center

Cystic Fibrosis Foundation\$44,295
Cystic Fibrosis Center of New Mexico-Cystic Fibrosis Registry - BAA

HHS/Health Resources and Services Administration\$25,000
New Mexico Pediatric Pulmonary Center - Administrative Supplement

WALTER DEHORITY

Duke University\$38,460
Clinical Study - Phase 1

Duke University\$11,951
Clinical Study - Phase 1 - Start-Up

TARA DUPONT

New Mexico Department of Health \$118,000
Developmental Care Continuity Program - Fee-For-Service

New Mexico Department of Health\$70,640
Developmental Care Continuity Program - Cost Reimbursement

American Academy of Pediatrics\$12,000
Neonatal Passport

RANDY HEIDENREICH

New Mexico Department of Health \$116,472
CMS Newborn Screening (FY 16) - BAA

SANDRA HEIMERL

HHS/Health Resources and Services Administration \$670,480
New Mexico Leadership Education in Neurodevelopmental Disabilities

CARMEN HERRERA

The Weil Foundation\$15,000
UNM Pediatric Integrative Medicine in Residency Program

LAUREN JANTZIE

Boston Children's Hospital\$60,219
Mechanisms of Neonatal Erythropoietin Neuroprotection

ALBERTA KONG

Fluor Federal Solutions, LLC.....\$77,376
Medical Services at Albuquerque Job Corps - BAA

JANE MCGRATH

New Mexico Human Services Department\$1,100,000
Envision New Mexico: The Initiative for Child Healthcare Quality

New Mexico Human Services Department \$259,817
School-Based Health Center Behavioral Health Quality Improvement (FY 15)

New Mexico Department of Health \$193,600
Race to the Top Early Learning Challenge

W.K. Kellogg Foundation \$125,000
Systems of Support for Breastfeeding in Selected NM Communities

New Mexico Department of Health \$122,857
School-Based Health Center Health Provision in the Schools (FY 15 Supplement)

New Mexico Department of Health\$60,000
Envision New Mexico - Newborn Hearing Screening Program Quality Improvement Project

New Mexico Department of Health\$58,000
Albuquerque School-Based Health

New Mexico Department of Health\$54,596
Analysis of Childhood Obesity Project (FY 15)

New Mexico Public Education Department.....\$50,000
GRADS FY 15

New Mexico Department of Health\$43,999
Envision Quality Improvement Project

New Mexico Department of Health\$40,000
Envision New Mexico - Newborn Hearing Screening Program Quality Improvement Project

Molina Healthcare of New Mexico\$20,000
Molina's Envision Quality Improvement Project

State of Colorado Department of Health Care Policy and Financing ...\$16,000
School-Based Health Center Data Analysis

New Mexico Department of Health\$15,825
Cuidate Curriculum Project FY 15

New Mexico Department of Health\$11,994
Envision SBHC

New Mexico Department of Health\$10,800
Albuquerque School-Based Health

Apex Education\$9,500
STD Screening and Assessment Tools for an Adolescent Population (Yr 1)

SUSAN MILLER

Bernalillo County.....\$4,999
UNM NM-CAPP Child Abuse Prevention

MARCIA MORIARTA

New Mexico Children, Youth and Families Department \$215,471
Early Childhood Infrastructure Development (FY 15)

New Mexico Children, Youth and Families Department\$93,000
Infant-Parent Psychotherapy (FY 15) - BAA

Utah State University.....\$45,492
Indian Children's Program - Withdrawn

New Mexico Children, Youth and Families Department\$20,000
Infant-Parent Psychotherapy (FY 15 Supplement) - BAA

New Mexico Children, Youth and Families Department\$5,000
Infant Mental Health Community of Practice

New Mexico Children, Youth and Families Department\$5,000
Infant Mental Health Community of Practice

ROBIN OHLS

National Institutes of Health\$64,930
Preterm Epo Neuroprotection Trial

CureDM Group Holdings, LLC.....\$3,000
Developmental of Human Fetal Pancreatic Cell Assays

RENEE RITA ORNELAS

New Mexico Department of Health \$391,800
Para Los Niños Program

New Mexico Crime Victims Reparation Commission\$23,450
Adolescent Continuity Clinic for Education on Self Safety

LINDA PARHAM

University of Southern California.....\$17,556
Development of Teaching Materials in Support of Sensory Integration and Praxis Test

University of Southern California.....\$11,705
Development of Teaching Materials in Support of Sensory Integration and Praxis Test

JANET POOLE

Patient-Centered Outcomes Research Institute.....\$1,771,785
ACA-Taking Charge of Systemic Sclerosis: Improving Patient Outcomes Through Self-Assessment

HENGAMEH RAISSY

National Jewish Health \$118,040
STICS - AsthmaNet - Clinical Trial Agreement - Phase 4

Vertex Pharmaceuticals Incorporated\$26,908
Clinical Trial Agreement - Phase 3



Frank Martinez and Yoselin Ordonez

HENGAMEH RAISSY (CONTINUED)

Oregon Research Institute	\$13,142
<i>Adaptation and Evaluation of a Family-Based Mindful Eating Intervention for Overweight Adolescents</i>	
AstraZeneca Pharmaceuticals, LP	\$10,110
<i>Clinical Trial Agreement - Phase 3</i>	
Parexel International	\$2,931
<i>Clinical Trial Agreement - Phase 3 - Supplement</i>	

MARY RAMOS

American Academy of Pediatrics	\$2,000
<i>Promoting Healthy Eating and Literacy at East San Jose Elementary School</i>	

ALYA REEVE

New Mexico Department of Health	\$52,750
<i>Continuum of Care - Mortality</i>	

JENNIFER VICKERS

New Mexico Department of Health	\$968,803
<i>Continuum of Care - Primary</i>	

KRISTI WATTERBERG

NIH/National Heart, Lung, and Blood Institute	\$373,608
<i>Adrenal Function and Adverse CV Outcomes at Age 6 After Extremely Preterm Birth</i>	
NIH/National Institute of Child Health and Human Development ...	\$294,683
<i>Cooperative Multicenter Neonatal Research Network</i>	
Research Triangle Institute	\$104,968
<i>Cooperative Multicenter Neonatal Research Network - Capitation</i>	
National Institutes of Health	\$3,760
<i>Effect of Hydrocortisone on the Cardiac Mass of Premature Incubated Infants</i>	

STUART WINTER

Children's Hospital of Philadelphia	\$15,000
<i>Clinical Trial Agreement - Phase 3</i>	
New Mexico Department of Health	\$15,000
<i>Children's Medical Services - Camp Enchantment</i>	

CRAIG WONG

The Children's Mercy Hospital	\$69,773
<i>Ckid Clinical</i>	
The Children's Mercy Hospital	\$17,800
<i>Ckid Steering Committee</i>	

Pediatrics Center for Development & Disability

TANYA BAKER-MCCUE

New Mexico Division of Vocational Rehabilitation	\$400,000
<i>DVR Partners for Employment</i>	
New Mexico Division of Vocational Rehabilitation	\$300,000
<i>DVR Project Search</i>	
New Mexico Developmental Disabilities Planning Council	\$160,000
<i>InfoNet/BabyNet</i>	
New Mexico Developmental Disabilities Planning Council	\$15,000
<i>School-to-Work Alliance</i>	
New Mexico Developmental Disabilities Planning Council	\$2,500
<i>NM LEND Legislative Advocacy Seminar</i>	

ANTHONY CAHILL

New Mexico Human Services Department	\$450,455
<i>Increasing the Quality of Life of New Mexicans with Brain Injuries and Caregivers Through Effective Support Services - BAA</i>	
HRSA/Maternal and Child Health Bureau	\$249,879
<i>New Mexico Perinatal and Infant Oral Health Quality Improvement Project</i>	
New Mexico Human Services Department	\$241,631
<i>Increasing the Quality of Life of New Mexicans with Brain Injuries and Caregivers Through Effective Support Services</i>	
New Mexico Human Services Department	\$208,825
<i>Increasing the Quality of Life of New Mexicans with Brain Injuries and Caregivers Through Effective Support Services</i>	
New Mexico Governor's Commission on Disability	\$60,000
<i>Support for the Southwest Disability Conference</i>	
New Mexico Governor's Commission on Disability	\$60,000
<i>Support for the Southwest Disability Conference</i>	
New Mexico Developmental Disabilities Planning Council	\$10,000
<i>DDPC Stipends</i>	

LORETTA CORDOVA DE ORTEGA

Qualis Health	\$80,625
<i>In-Home Assessments for Medically Fragile Waiver - BAA</i>	
Molina Healthcare of New Mexico	\$10,000
<i>In-Home Assessments</i>	

ANDREW HSI

New Mexico Department of Health	\$86,500
<i>DDSD FIT</i>	

CATHERINE MCCLAIN

New Mexico Human Services Department	\$2,000,000
<i>Improving Quality (75/25 & 50/50 Medicaid Match) Supporting Child Development Through Evidence-Based Practices</i>	
Region IX Education Cooperative	\$8,600
<i>CYFD Early Childhood Professional Development</i>	

MARCIA MORIARTA

New Mexico Department of Health	\$3,116,000
<i>Autism Programs - BAA</i>	
New Mexico Children, Youth and Families Department	\$939,672
<i>ACA-Nurse Family Partnership Program (FY 16)</i>	
New Mexico Department of Health	\$827,000
<i>Race To The Top Early Learning Challenge - BAA</i>	
New Mexico Department of Health	\$755,969
<i>Administrative Support - Intensity Scale in New Mexico (FY 16)</i>	
HHS/Administration for Community Living	\$545,919
<i>University Center for Excellence in Development Disabilities Education</i>	



Erin Watson

HHS/Administration for Community Living	\$535,215
<i>University Center for Excellence in Development Disabilities Education</i>	
New Mexico Department of Health	\$496,415
<i>DDSD Partners for Employment (FY 15)</i>	
New Mexico Department of Health	\$416,000
<i>Early Childhood Network - BAA</i>	
New Mexico Department of Health	\$406,000
<i>Early Childhood Network</i>	
New Mexico Children, Youth and Families Department	\$344,554
<i>ACA-Nurse-Family Partnership Program (FY 16)</i>	
New Mexico Department of Health	\$237,760
<i>Improving the Quality of Life of New Mexico Youth With Disabilities in Transition</i>	
New Mexico Children, Youth and Families Department	\$150,000
<i>Infant Mental Health Team (FY 15)</i>	
New Mexico Department of Health	\$127,274
<i>NM SAFE Program</i>	
New Mexico Department of Health	\$111,607
<i>DDSD Statewide Training Database</i>	
New Mexico Department of Health	\$111,607
<i>DDSD Statewide Training Database</i>	
New Mexico Department of Health	\$106,191
<i>Project SET (Specialized Early Teaching) - BAA</i>	
New Mexico Department of Health	\$106,191
<i>Project SET (Specialized Early Teaching)</i>	
Navajo Nation	\$76,000
<i>Growing in Beauty Program Therapy Services</i>	
New Mexico Department of Health	\$76,000
<i>Medically Fragile Case Management Program Contract</i>	
New Mexico Department of Health	\$35,400
<i>Statewide Transition Coordination</i>	
New Mexico Department of Health	\$35,400
<i>Statewide Transition Coordination</i>	
New Mexico Department of Health	\$20,250
<i>Deaf-Blind Match - BAA</i>	
New Mexico Department of Health	\$19,238
<i>Deaf-Blind Match</i>	
New Mexico Children, Youth and Families Department	\$16,000
<i>Community of Practice Training - BAA</i>	
PAT OSBOURN	
New Mexico Public Education Department	\$1,439,992
<i>PED Pre-K Race to the Top Early Learning Challenge (FOCUS TQRIS)</i>	
New Mexico Public Education Department	\$482,119
<i>PED Pre-K Race to the Top Early Learning Challenge (FOCUS TQRIS)</i>	
New Mexico Public Education Department	\$478,549
<i>PED Contract (ASBS, SET, Deaf-Blind, PSN)</i>	
New Mexico Public Education Department	\$478,548
<i>PED Contract</i>	
U.S. Department of Education	\$100,912
<i>Project for New Mexico Children Who Are Deaf-Blind</i>	
New Mexico Developmental Disabilities Planning Council	\$62,500
<i>Partners in Policymaking</i>	
Rio Rancho Public Schools	\$33,000
<i>Rio Rancho Public Schools Consultations</i>	



Lauren Carrica

Albuquerque Public Schools	\$3,630
<i>Albuquerque Public Schools Consultations</i>	
Mora Independent Schools	\$1,102
<i>Mora Independent Schools Consultations</i>	

Pediatrics Prevention & Population Sciences

THERESA CRUZ

New Mexico Human Services Department	\$128,361
<i>Statewide SNAP-Ed Evaluation</i>	
Presbyterian Healthcare Services	\$89,268
<i>REACH Evaluation</i>	
New Mexico Department of Health	\$53,000
<i>PRC Sexual Violence Prevention Technical Assistance Project</i>	
New Mexico Department of Health	\$45,000
<i>PRC Sexual Violence Prevention Technical Assistance Project</i>	

SALLY DAVIS

HHS/Centers for Disease Control and Prevention	\$83,200
<i>Nutrition and Obesity Policy Research and Evaluation in Early Childcare Settings Serving Southwest American Indian and Hispanic Populations</i>	
New Mexico Department of Health	\$75,000
<i>Teen Outreach Program (FY 15)</i>	
United Way	\$70,000
<i>Promoting Healthy Lives (ACL Teen Centers)</i>	
New Mexico Department of Health	\$20,000
<i>Implementing Evidence-Based Recommendations that Promote Healthy Activities</i>	
New Mexico Primary Care Association	\$15,000
<i>Integrated Medicaid Enrollment</i>	
New Mexico Department of Health	\$7,275
<i>Implementing Evidence-Based Recommendations that Promote Healthy Activities</i>	

GLENDIA FALLAS

New Mexico Human Services Department	\$189,137
<i>CHILE Plus, Social Marketing and Statewide SNAP-ED Evaluation</i>	

PATRICIA KEANE

New Mexico Human Services Department	\$422,685
<i>CHILE Plus, Social Marketing and Statewide SNAP-ED Evaluation</i>	

SHIRAZ MISHRA

NIH/National Institutes of Health	\$252,185
<i>New Mexico's Future Researchers Exploring Science and Health (SEPA)</i>	



Cédric Cleyrat, PhD

LINDA PEÑALOZA

New Mexico Department of Health <i>Youth Risk and Resiliency Survey Project</i>	\$204,430
New Mexico Department of Health <i>Youth Risk and Resiliency Survey Project</i>	\$100,869
New Mexico Department of Health <i>Tobacco Program Evaluation and Support HEART</i>	\$74,905
New Mexico Department of Health <i>Youth Risk and Resiliency Survey Project</i>	\$50,000
New Mexico Public Education Department <i>ESHE Evaluation</i>	\$32,000
New Mexico Public Education Department <i>ESHE Evaluation</i>	\$32,000
New Mexico Public Education Department <i>ESHE Evaluation</i>	\$18,093
New Mexico Public Education Department <i>ESHE Evaluation</i>	\$8,000

Psychiatry and Behavioral Sciences

CHRISTOPHER ABBOTT

The Mind Research Network <i>Project 5-Abbott-Multimodal Imaging of Neuropsychiatric Disorders: Mechanisms & Biomarkers (COBRE II)</i>	\$177,724
---	-----------

CHERYL AINE

The Mind Research Network <i>MDA - Aine - Multimodal Imaging of Neuropsychiatric Disorders: Mechanisms & Biomarkers (COBRE II)</i>	\$81,754
The Mind Research Network <i>ADA - Aine - Multimodal Imaging of Neuropsychiatric Disorders: Mechanisms & Biomarkers (COBRE II)</i>	\$55,222

DEBORAH ALTSCHUL

W.K. Kellogg Foundation <i>New Mexico Learning and Evaluation Consortium</i>	\$403,487
New Mexico Behavioral Health Collaborative/Human Services Department <i>Screening, Brief Intervention and Referral to Treatment - BAA</i>	\$257,158
New Mexico Children, Youth and Families Department <i>CYFD System of Care - BAA</i>	\$232,333
San Felipe Pueblo <i>KEYWAH II</i>	\$110,337

PAMELA ARENELLA

The Mind Research Network <i>Effectiveness of Varenicline: Testing Individual Differences</i>	\$13,000
--	----------

JERALD BELITZ

HHS/Health Resources and Services Administration <i>Psychology Internship Expansion Grant</i>	\$122,099
--	-----------

JEANNE BEREITER

San Felipe Pueblo <i>San Felipe Home Visiting FY 15</i>	\$69,668
New Mexico Children, Youth and Families Department <i>Rural Psychiatric Services - Child Fellowship Training</i>	\$63,100
Anonymous <i>Home Visiting</i>	\$28,000

MICHAEL BOGENSCHUTZ

National Institutes of Health <i>Comparing Interventions for Opioid-Dependent Patients Presenting in Medical EDs</i>	\$632,425
New Mexico Children, Youth and Families Department <i>ASAP Adolescent Addictions - BAA</i>	\$169,220

CAROLINE ALBERTA BONHAM

New Mexico Behavioral Health Collaborative/ New Mexico Human Services Department <i>Behavioral Health Services (FY 15)</i>	\$790,377
New Mexico Human Services Department <i>Behavioral Health Services (FY 16)</i>	\$651,843
Albuquerque Area Indian Health Service <i>Albuquerque Area IHS Center for Telehealth Excellence Project FY 15 - BAA</i>	\$359,334
Hidalgo Medical Services <i>Hidalgo Medical Services, Inc. - Psychiatric Services - BAA</i>	\$150,000
New Mexico Human Services Department <i>Behavioral Health Services</i>	\$142,348
New Mexico Human Services Department <i>Behavioral Health Services</i>	\$142,348
NIH/National Institute on Drug Abuse <i>NIMH Outreach Partnership</i>	\$7,500

JUAN BUSTILLO

The Mind Research Network <i>ACAM - Bustillo - Multimodal Imaging of Neuropsychiatric Disorders: Mechanisms & Biomarkers (COBRE II)</i>	\$356,488
Otsuka Pharmaceutical Development & Commercialization, Inc. <i>Clinical Trial Agreement - Phase 1</i>	\$200,000
University of Texas <i>Clinical Trial Agreement - Phase 4</i>	\$137,610
The Mind Research Network <i>A Multidimensional Investigation of Cognitive Control Deficits in Psychopathology</i>	\$45,221
The Mind Research Network <i>A Multidimensional Approach for Cognitive Control Deficits in Psychopathology</i>	\$44,658

RICHARD CAMPBELL

Albuquerque Public Schools <i>Neuropsychiatric Evaluations - BAA</i>	\$101,652
---	-----------

ANNETTE SUSAN CRISANTI

OptumHealth New Mexico <i>OptumHealth - Adult Transformation: Healthy Homes</i>	\$37,291
OptumHealth New Mexico <i>OptumHealth - Adult Transformation: Healthy Homes</i>	\$37,291

ERIK ERHARDT

The Mind Research Network\$15,871
BNI - Erhardt - Multimodal Imaging of Neuropsychiatric Disorders: Mechanisms & Biomarkers (COBRE II)

DAVID GRAEBER

Bernalillo County Juvenile Detention Center\$76,530
Professional Services

PAULA HENSLEY

INNO Clinical Outcomes LLC \$178,400
Clinical Trial Agreement - Phase 1

INNO Clinical Outcomes LLC \$118,608
Clinical Trial Agreement - Phase 2

BRIAN ISAKSON

OptumHealth New Mexico\$39,320
Veterans First Jail Diversion Project

OptumHealth New Mexico\$25,000
Military, Veteran and Family Support Services

OptumHealth New Mexico\$25,000
Military, Veteran and Family Support Services

AVRON KRIECHMAN

New Mexico Department of Health \$125,000
Telehealth School-Based Health Centers

STEPHEN LEWIS

Feinstein Institute for Medical Research \$114,585
ACA-Improving Care & Reducing Cost

Feinstein Institute for Medical Research\$12,081
RAISE Extension - Part II

Feinstein Institute for Medical Research\$8,338
RAISE Extension - Part I

RASHMI SABU

HHS/Substance Abuse and Mental Health Services Administration.. \$399,769
Addressing Childhood Trauma through Intervention, Outreach and Networking

JULIE GRIFFIN SALVADOR

New Mexico Children, Youth and Families Department \$147,413
Communities of Care (CYFD SOC Expansion) FY 16 - BAA

New Mexico Children, Youth and Families Department \$110,157
Communities of Care (CYFD SOC Expansion) FY 15 - BAA

OptumHealth New Mexico\$34,690
Treatment for Pregnant and Postpartum Women

OptumHealth New Mexico\$28,100
NIDA Total Community Approach

HELENE SILVERBLATT

New Mexico Department of Health \$225,000
Public Psychiatry Program

ROBERT THOMA

The Mind Research Network \$147,731
Multimodal Imaging of Neuropsychiatric Disorders: Mechanisms & Bio-Markers (COBRE II) Project 4

The Mind Research Network\$14,777
Multimodal Imaging of Neuropsychiatric Disorders: Mechanisms & Bio-Markers (COBRE II)

MAURICIO TOHEN

Dartmouth College..... \$170,377
Clozapine for Cannabis Use Disorder in Schizophrenia

The Peak at Santa Teresa, Inc.\$25,000
Telemedicine Services

CLAIRE ELIZABETH WILCOX

NIH/National Institute on Alcohol Abuse and Alcoholism \$180,013
Neural Mechanisms of Change During Alcohol Use Disorder Treatment with Prazosin

MARIA YELLOW HORSE BRAVE HEART

NIH/National Institute on Alcohol Abuse and Alcoholism \$140,273
Iwakapiya - Healing: Historical Trauma and Group IPT for American Indians

Radiology**LOREN KETAI**

NIH/National Center for Complementary and Integrative Health \$179,929
Brain-Centered Therapy vs. Medication for Urgency Urinary Incontinence: An RCT- MPI

REED SELWYN

X-Ray Associates of New Mexico\$55,000
Medical Physicist Services

PHILIP WIEST

U.S. Department of Veterans Affairs\$1,283,245
Radiological and Nuclear Medicine Diagnostics and Therapy Services

U.S. Department of Veterans Affairs \$733,333
Radiological and Nuclear Medicine Diagnostic and Therapy Services

New Mexico Department of Health\$83,018
Breast and Cervical Cancer Early Detection Program

New Mexico Department of Health\$20,000
Breast and Cervical Cancer Early Detection Program

U.S. Department of Veterans Affairs\$7,318
Radiological and Nuclear Medicine Diagnostic and Therapy Services

Surgery**ARUP DAS**

NIH/National Institute of Environmental Health Sciences \$339,750
Inflammatory Chemokines: A Novel Target in Early Diabetic Retinopathy

New Mexico VA Health Care System.....\$41,420
IPA-Caroline Franco Nitta

NIH/National Institute of Environmental Health Sciences\$30,200
Inflammatory Chemokines: A Novel Target in Early Diabetic Retinopathy

THOMAS HOWDIESHELL

Astute Medical Inc.\$35,000
Clinical Trial Agreement - Phase 4



Mara Steinkamp, PhD

MARCO RICCI

Datascope Corp.\$50,000
Intra-Aortic Balloon Pump Review & Consultation

JOHN RUSSELL

New Mexico Donor Services\$30,000
Organ Procurement Services

ANIL SHETTY

New Mexico Department of Health\$3,000
CMS Cleft Palate Clinics

TIMOTHY WINTER

Jaeb Center for Health Research\$32,371
Amblyopia Treatment Study (ATS18)

Undergraduate Medical Education

PAMELA DEVOE

American Association of Medical Colleges\$2,000
Does Near-Peer Tutoring Facilitate Medical Student Learner Self-Efficacy?

UNIVERSITY OF NEW MEXICO HOSPITAL

STEVE MCKERNAN

City of Albuquerque..... \$713,300
Assertive Community Treatment Program - FY 15 - BAA

City of Albuquerque..... \$183,000
Gang Prevention Program - BAA

City of Albuquerque..... \$161,970
Primary Care Program - BAA

New Mexico Children, Youth and Families Department\$54,000
Home Visits and Education

Albuquerque Area Indian Health Service\$25,000
IHS Inpatient Psychiatric Services Agreement

Albuquerque Health Services.....\$25,000
Opioid Treatments (Emergency Medicating Agreement)

RODNEY MCNEASE

Albuquerque Public Schools.....\$8,000
Behavioral Health Assessment and Treatment for Students

UNIVERSITY OF NEW MEXICO MEDICAL GROUP

ANTHONY MASCIOTRA

New Mexico Children, Youth and Families Department \$179,910
Professional Services - BAA

Albuquerque Area Indian Health Service.....\$25,000
Provider Services Agreement

UNM SANDOVAL REGIONAL MEDICAL CENTER

KEVIN ROGOLS

Sandoval County.....\$14,000
Sandoval County DWI and Prevention Program



Rob Oliver

RESEARCH MEANS HOPE



Donate to Research

Our research programs are focused on critical health problems affecting New Mexicans and bridge the gap to more rapidly deliver discoveries to the clinical setting. Your contribution will help us meet new challenges and seek solutions to help people lead longer and healthier lives. The UNM Foundation can accommodate almost any giving interest, including health research in general, a particular disease category, or one of our signature programs.

**Please contact Bill Uher for more information
bill.uher@unmfund.org or 505.277.4078**

RESEARCH ANNUAL REPORT 2015

Managing Editor

Michael Haederle

Design, Layout and Illustration

Sara Mota

Contributing Editors

Furhana Afrid; John Arnold; Cindy Foster; Luke Frank;
Leslie Linthicum; Pari Noskin; Heidi Rishel Brakey; Michele Sequeira

Photography

Furhana Afrid; John Arnold; Rebecca Gustaf; Sara Mota
Photograph on page 3 by Kim Jew Photography

Videography

Furhana Afrid; John Arnold; Rebecca Gustaf
Related videos: <https://vimeo.com/album/3663079>

© Copyright 2015

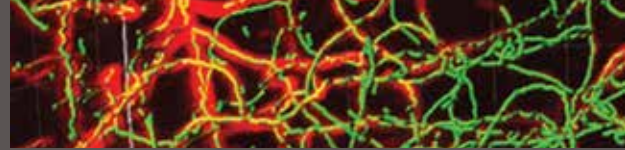
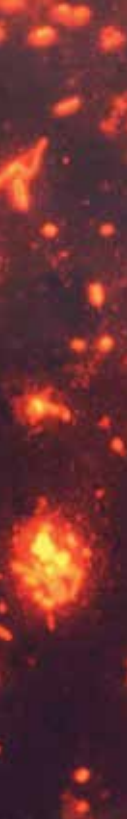
University of New Mexico
Health Sciences Center Office of Research
hsc.unm.edu/research

Published by the HSC Communications and Marketing Department

Special thanks to the Office of Pre-Award for their assistance



Office of Research
1 University of New Mexico
MSC08-4560, Fitz Hall B-61
Albuquerque, New Mexico 87131-0001
(505) 272-6950 • FAX (505) 272-8738
hsc.unm.edu/research



RESEARCH ANNUAL REPORT 2015

