

Hello!

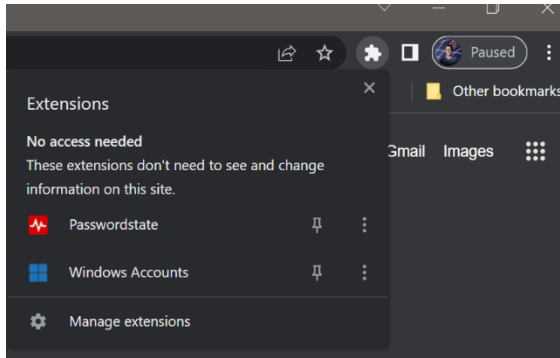
You'll notice that you have the Passwordstate plugin installed on your Chrome and Edge browsers.

Passwordstate is HSC's on-premise web-based solution for Enterprise Password Management, where teams of people can access and share sensitive password resources.

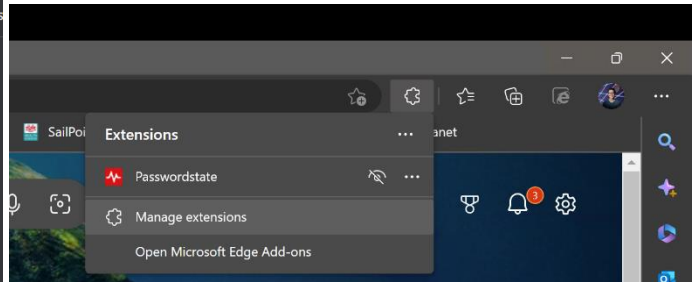
Role-based administration and end-to-end event auditing provides a secure platform for password storage and collaboration. 256bit AES data encryption, code obfuscation, and enterprise scalability makes it the Enterprise Password Manager of choice.

What is a password manager?

A password manager is a computer program that allows users to store and manage their passwords for local applications or online services such as web applications, online shops or social media. Password managers can generate passwords and fill online forms.

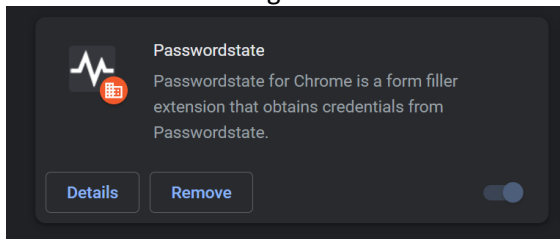


Chrome

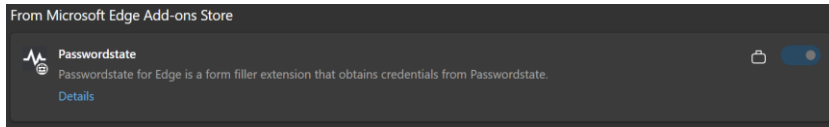


Edge

If you do not see the plugin, you may need to navigate to your extension manager seen above in both screenshots as "Manage extensions"

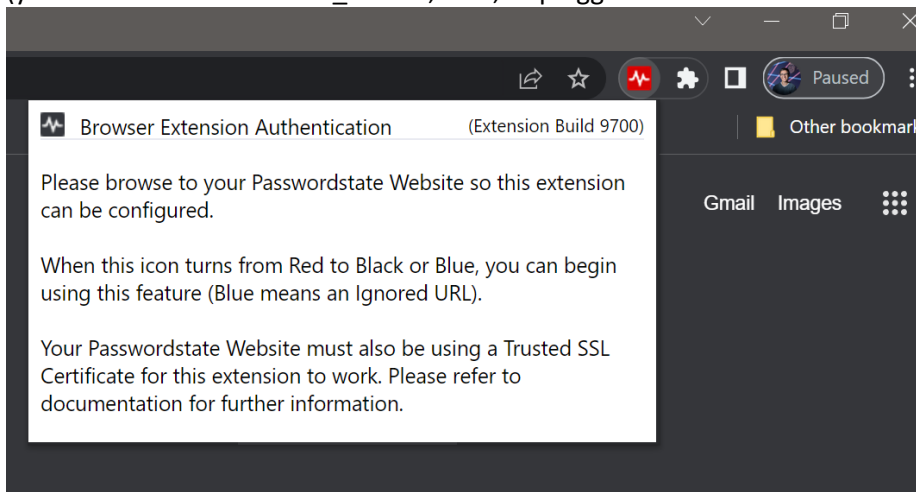


Chrome

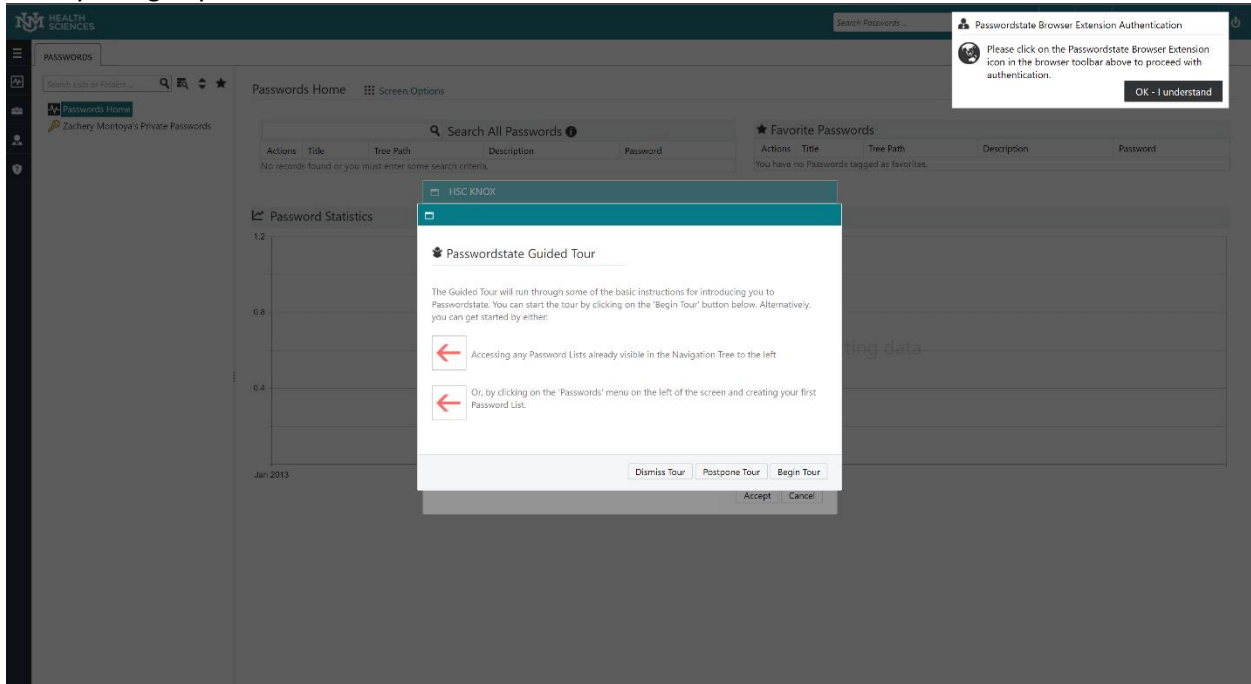


Edge

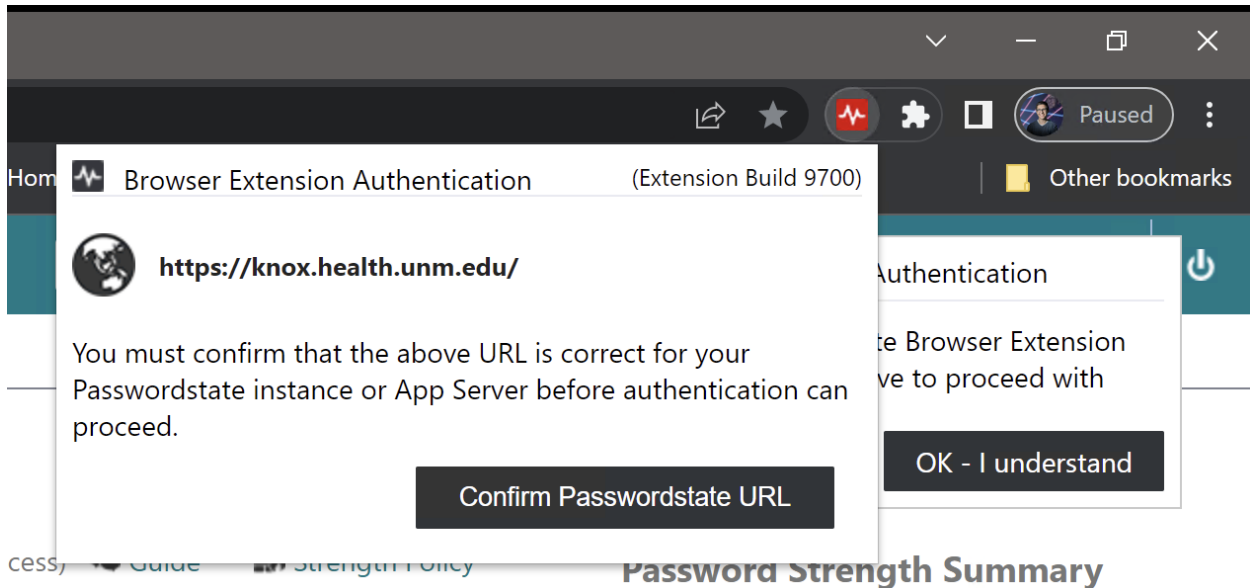
Once there make sure that the toggle is flipped to the On position, as seen above.
To activate the plugin you'll need to navigate to knox.health.unm.edu and log in with your HSC NetID.
(you will need to be on HSC_Secure, VPN, or plugged into the network to access knox.health.unm.edu)



Once you log in you should see the below screen

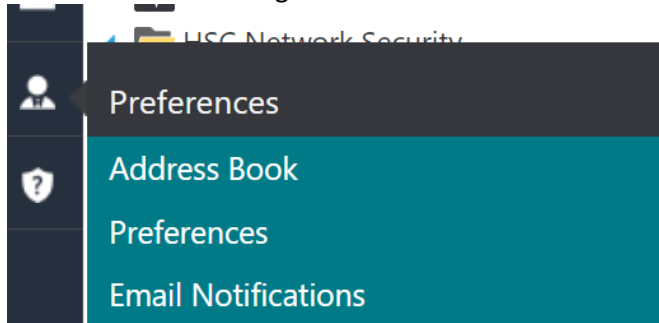


Here you're asked to click on the red Passwordstate plugin to confirm the Passwordstate URL



Click on the "confirm Passwordstate URL button"

Once this is done: navigate to Preferences



And click on "Browser Extension"

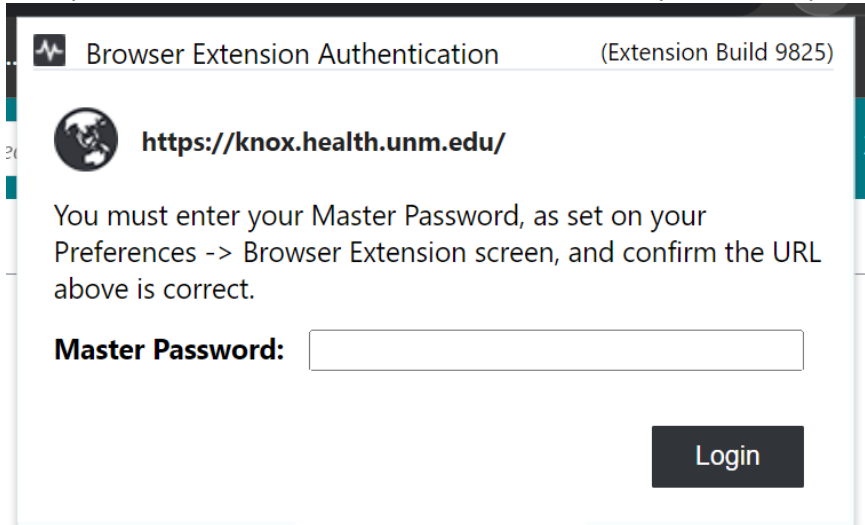
To modify your preferences for account **health\zacherym**, please make changes in the relevant tabs below, then click on the 'Save' button.

A screenshot of the Passwordstate "browser extension" preferences page. The page has a navigation bar with tabs: "passwords tab", "hosts tab", "miscellaneous", "color theme", "authentication options", "mobile access options", "browser extension", and "api". The "browser extension" tab is selected. Below the navigation bar, there is a section titled "Browser Extension Master Password" with a text input field. A note below the field reads: "Please specify your Master Password for using the Browser Extensions feature. The password must be used to authenticate your extension, before it can be used." Below the note is a label "Browser Extension Master Password:" followed by a text input field.

Enter in a Master Password of your choosing, this can be a 6 Digit pin

Click on save and close

Finally click on the Passwordstate extension and enter your master password



The screenshot shows a dialog box titled "Browser Extension Authentication" with "(Extension Build 9825)" in the top right corner. Below the title bar, there is a globe icon followed by the URL "https://knox.health.unm.edu/". The main text reads: "You must enter your Master Password, as set on your Preferences -> Browser Extension screen, and confirm the URL above is correct." Below this text is a label "Master Password:" followed by an empty text input field. At the bottom right of the dialog is a dark button labeled "Login".

Once you do this, you will be able to use the Passwordstate plugin like you would with any password manager.

For usage instructions please see the below link (again only accessible while on the network)

<https://knox.health.unm.edu/help/manuals/browserextensionmanual/browser-extension-usage.html>